



Mount'n Mover Ordering Guide

How to order a complete Mount'n Mover System

The Mount'n Mover is a versatile mounting system , designed to accommodate the wide range of our customer's mounting needs . When ordering your Mount'n Mover system , you choose the components that fit your specific needs , such as your wheelchair frame and the device you want to attach to it .

Follow the four steps in this guide to make sure you get all the pieces you need to complete your individualized Mount'n Mover system.

If you still have questions after reviewing this guide , please feel free to call us for assistance . We are here to help you!

STEP 1:

Choose your preferred Mount'n Mover style

STEP 2:

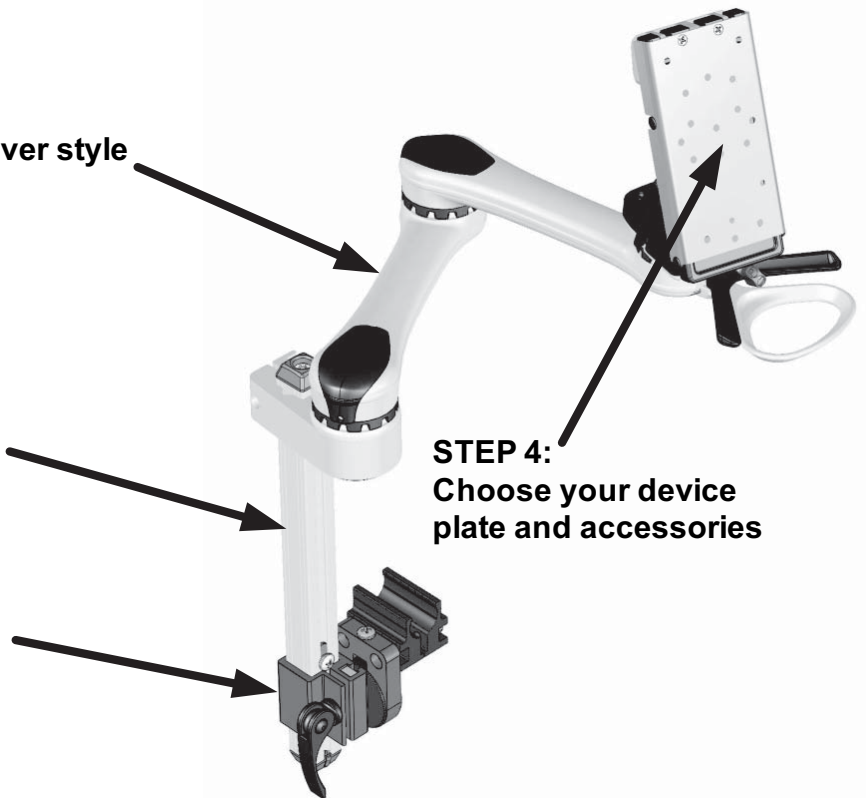
Choose your preferred post length

STEP 3:

Choose your mounting hardware

STEP 4:

Choose your device plate and accessories



Picture above shows a Mount'n Mover system that includes a Dual Arm Mount'n Mover , a post, and mounting hardware for attaching to a wheelchair with round tubing .

STEP 1: Choose a Mount'n Mover



Dual Arm



Single Arm



Tilt'n Turner

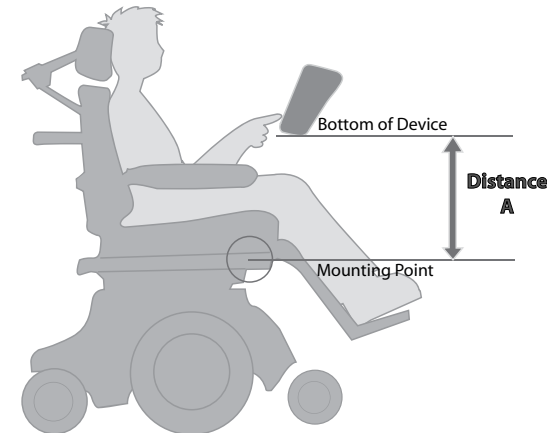
Use the Mount'n Mover Product Overview and Specifications (see back page) to compare the products and determine which one is best for you. Each one comes with a Quick Release Plate (QRP).



STEP 2: Choose a post length



Post length is roughly the distance from the attachment point to the bottom of a person's tray or device when it is in their preferred operating position (See drawing to the right). The next longest post length should be chosen. Post lengths are available in 8", 12", 18" and 24". Custom lengths are available at an additional cost.



STEP 3: Choose mounting hardware

- Option 1 for wheelchair mounting (see below)
- Option 2 for table mounting (top of next page)

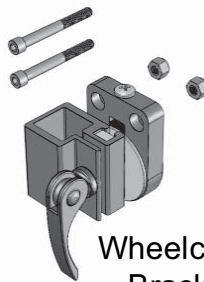
OPTION 1 – Wheelchair attachment

There are many possible configurations for mounting the Mount'n Mover to a wheelchair.

Step A: Choose the preferred style of wheelchair bracket.

Step B: Choose the appropriate attachment hardware to secure the wheelchair bracket to the wheelchair.

A. Wheelchair Brackets



Wheelchair Mounting Bracket with post angle adjustment

OR



Wheelchair Mounting Bracket without post angle adjustment

B. Wheelchair Bracket mounting hardware



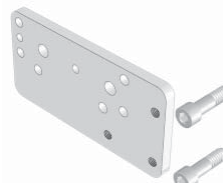
Round Clamps
(available for 1" and 7/8" round tubing)



T Nut Hardware
(works with most Quantum and Invacare slidetracks)



Adapter plate
(for attaching to hole spacing on the WC 1" to 2" in spacing)



Adapter plate 2
(fits Permobil Corpus and Koala; used with Quantum and Jazzy w/c tie downs)



L-Shaped Angled Extension
(use one or two depending on how far out of an extension is needed)

STEP 3:

OPTION 2 – Table mounting

Table Clamp mounts directly to a table. Clamp opening can accommodate tables between ½" to 2 ¾" in thickness.



STEP 4: Choosing Accessories : Device Plates , Trays and more

Some devices attach directly to the provided Quick Release Plate and others require an additional attachment plate (see below).

For information about devices not shown , contact BlueSky Designs. Custom Plates are available upon request .

Device Plate attachment chart

Company	Device Type	DP-DV1	DP-DV2	DP-DV3	QRP	DP-PRC1	DP-PRC2	DP-T1	DP-AN1
DynaVox	V				✓				
	Vmax, DV4, MT4	✓							
	EyeMax		✓						
	Tango			✓					
PRC	ECO2, ECOpoint					✓			
	ECO-14, Pathfinder 2, SpringBoard, SpringBoard Light, Vanguard				✓				
	Vantage Light						✓		
Tobii	P10, C8, C12, LightWriter							✓	
Ablenet	BIGmack, BIG Step-by-Step, Big Red, FL4SH								✓

Trays

Mount'n Mover trays and custom trays attach to Quick Release Plate (QRP) for use with the Mount'n Mover.



Tray with a lip
(12" x 16")



12" x 12"
Tray



Laptop Tray
(12" x 16")

Accessories






Additional Quick Release Plate (QRP)
(Note: each Dual, Single Mount'n Mover or Tilt'n Turner comes with a QRP attached)



Locking Tilt Module (LTM)

Separate system from the Mount'n Mover .
Can be attached to a tray or table top with ease .
Does not come with a Quick Release Plate.

Mount'n Mover product overview and specifications

Mount'n Mover systems	 Dual Arm	 Single Arm	 Tilt'n Turner
Common to all systems	<ul style="list-style-type: none"> ◆Flexible, easy and independent repositioning of attached devices or trays ◆Easy access handles unlock joints for safe, easy and controlled movement ◆Unlock and move the device with one-handed use ◆Customizable memory locks provide secure and repeatable, user-specific positioning ◆Up to twelve possible lock positions per joint ◆Multiple lock positions may be set for secure use in more than one position ◆Lock-setters can be set or reset without special tools ◆Tilt adjusts from 0 to 90 degrees, and locks anywhere in between ◆Torque hinge keeps device from slamming down unintentionally 		
Joint comparison	3 joints; 1,728 lock positions	2 joints; 144 lock positions	1 joint; 12 lock positions
Full extension	15 inches (from shoulder to wrist)	7 ½ inches (from shoulder to wrist)	2 inches (from wrist to post)
Placement flexibility	Extremely versatile placement and positioning	Moderately versatile placement and positioning	Allows a user to rotate a device or tray 360 degrees
Device height considerations	Least compact; height may be problematic for devices that need to be low for access	More compact; distance from bottom of mount to top of device is less than dual	Most compact; height placement depends on post height
Reach required for repositioning	Requires least amount of reach to move from one position to another	Requires more reach to move out of the way than dual	Accessible to hand on the side on which it is mounted
Cost	Most expensive	Mid-range price	Least expensive

Designed and Manufactured by Blue**Sky** Designs
 2637 27th Ave. South, Suite 209, Minneapolis, MN 55406
 For information and support call: 612-724-7002 or toll-free 888-724-7002
 websites: www.mountnmover.com and www.blueskydesigns.us
 e-mail: info@blueskydesigns.us

**Move
it!
because
you can ...**