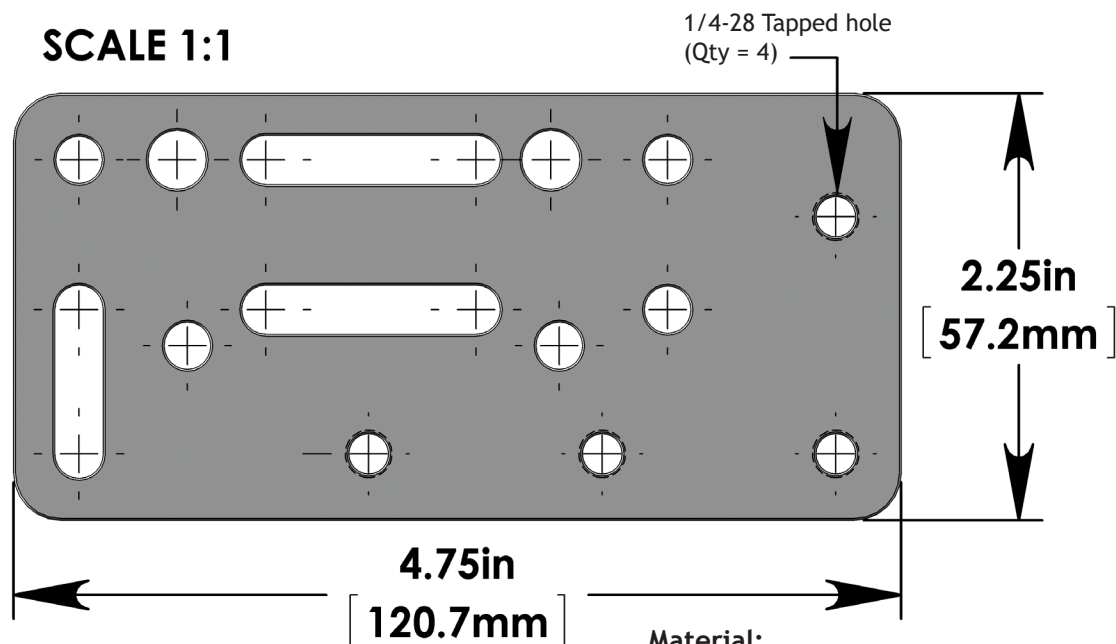


Adapter Plate 2 (WC-AP2) Multi-Use Plate

SCALE 1:1



Material:
0.250" (6.35 mm) laser cut steel
Coating:
Electroless nickel

Set Includes:

(1) Adapter Plate 2 (WC-AP2)

Hardware - Plate to Plate Attachment

(2) 1/4-28 x 1/2" Socket head cap screws

Hardware - Unitrack:

(4) M6-1 x 14 Socket head cap screws

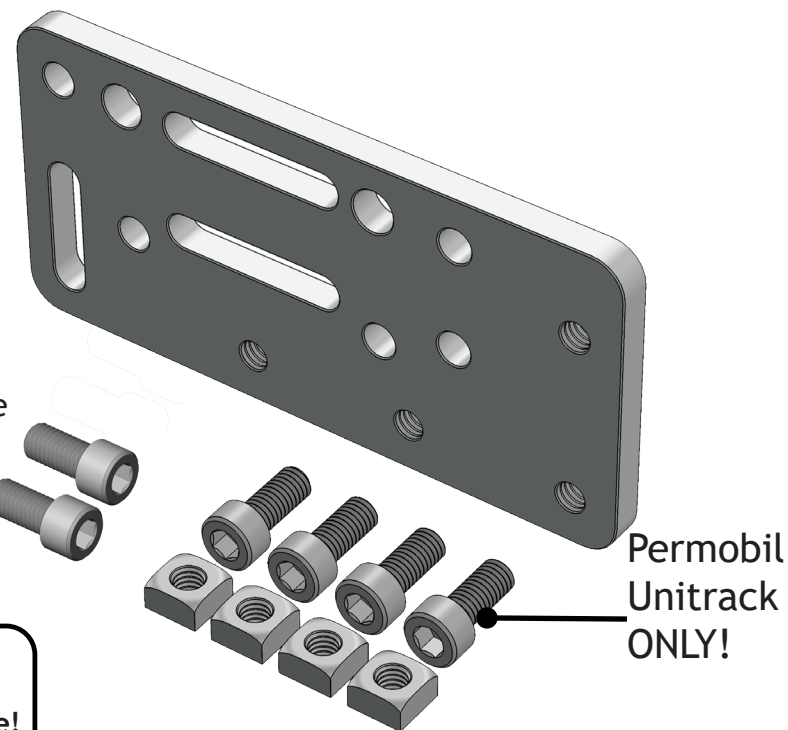
(4) M6-1 x 10 Square nut

Plate to Plate Attachment Options

- Non-threaded hole to threaded hole = Good
- Non-threaded hole to non-threaded hole with nut = Good
- Threaded hole to threaded hole = Not good
(will damage threads!)

Hole Pairing Options

- Two holes = BEST
- Hole and slot (horizontal or vertical) = Good
- Slot and slot (both horizontal) = Good
- Two vertical slots = NOT GOOD! (could slip!)



WARNING!

Never attach two plates via threaded hole to threaded hole!
This damages the threads and the connection can loosen!

Mount'n Mover™
by BlueSky Designs

mountnmover.com

Product: WC-AP2, Adapter Plate 2
Weight: 10.0 oz. (0.28 kg)

1-888-724-7002 (toll free) or 1-612-724-7002

pg 1 of 1

Wheelchair Attachment Overview

* All plates are considered 'multi-use plates' and can be configured, combined, and used in a variety of ways.

Anchor to Chair

* What you use will depend on what kind of chair frame you have.

- Round tubing
- Slide track
- Hole-spacing
- Tie-Down

OR

T-Nut
(WC-TN)

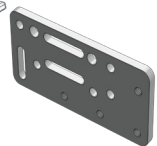


Coved Spacers
(WC-COVED)

Adapter Plate 5
(WC-AP5)



Adapter Plate 2
(WC-AP2)



Adapter Plate 4
(WC-AP4)



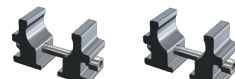
Round Clamp
(WC-R1 or R7/8)



Span the bridge or collar clamps with a plate



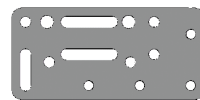
Collar Clamps



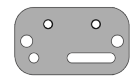
Bridge Clamps



(WC-AP5)



(WC-AP2)



(WC-AP)

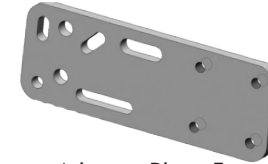


(WC-AP4)

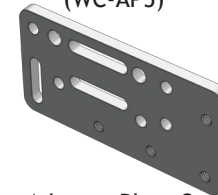
Start with a
power or
manual
wheelchair

Plate to span
across the bridge clamps
or collar clamps

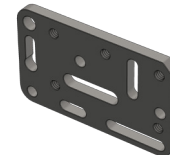
OPTIONAL OFFSET



Adapter Plate 5
(WC-AP5)



Adapter Plate 2
(WC-AP2)



Adapter Plate 4
(WC-AP4)

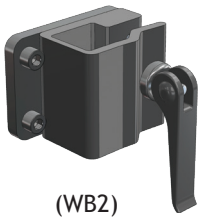


Angle Adjust Plate
(WC-APAP)

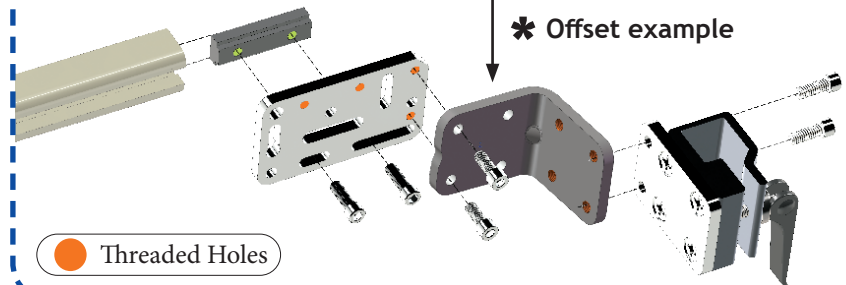


L-Angle Extension Plate
(WC-LAE)

Wheelchair Bracket



* Offset example



Threaded Holes