



About the Camera-Attachment Plate with Quick Release Plate (DP-CAM1 + QRP)

The Camera-Attachment Plate (DP-CAM1) allows for attaching a Mount'n Mover Quick Release Plate to many point-and-shoot class cameras.



DP-CAM1 + QRP Contents:

1. Camera-Attachment Mounting (CAM) Plate
2. Quick Release Plate

Requirements:

Time : Approx 5 minutes
Tools : Phillips Screwdriver



2637 27th Ave. S. Suite 209 • Minneapolis, MN 55406
Ph: 612-724-7002 • Toll Free: 888-724-7002 • Fax: 888-311-4435
info@blueskydesigns.us • www.mountnmover.com

Rev. 10/13/2010

Attaching the DP-CAM1 + QRP to a camera



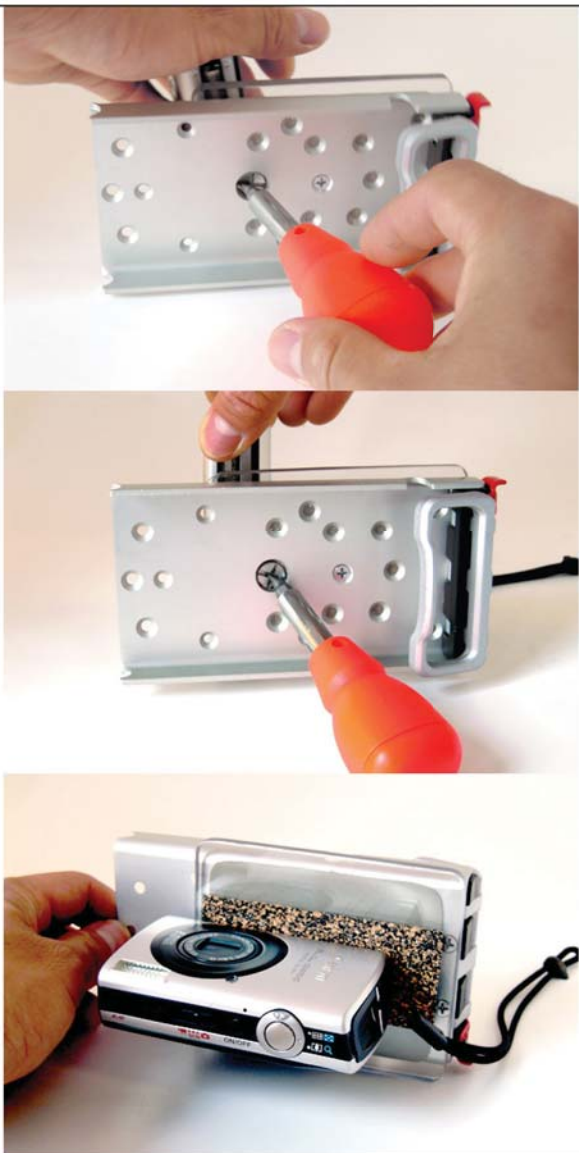
Familiarize yourself with the camera you want to mount.

On the underside of most “point-and-shoot” cameras – there should be a threaded hole.



Step 1/3: **Align the CAM-Plate**

There is a phillips-head screw that is fixed onto the CAM-plate. You can access it by rotating the (CAM-plate) relative to the Quick Release Plate – so that the largest hole lines up with the screw.



Step 2/3:
Attach the camera

Using a regular Phillips screwdriver, screw the CAM-plate into the threaded hole of your camera.

Align the camera so that mostly sits on the cork padding on the CAM-Plate - then tighten the screw enough so that the camera is tight against the plate.

(the camera and plate should spin together if you try to move it)

Do not over-tighten this screw, as it may damage your camera!



Step 3/3:
Attach the camera

You are now ready to use your camera with your Mount'n Mover!

NOTE: To rotate the camera, rotate the Camera-Attachment plate, and not the camera.