

A woman with short brown hair, wearing a purple leopard-print shirt and grey pants, is seated in a black and green motorized wheelchair. She is smiling and looking at a laptop screen. The laptop is mounted on a silver metal arm that extends from the wheelchair's frame. Another arm, also extending from the frame, holds a large magazine open for her to read. The wheelchair has large, treaded tires and a green base. The background is a solid light green.

# Mount'n Mover™

by BlueSky Designs

Download our catalog at:  
[mountnmover.com/catalog](http://mountnmover.com/catalog)

The Mount'n Mover  
wheelchair mounting system

**Move it easily and  
independently!**

no tools required

January 2019

# Mount'n Mover™

by BlueSky Designs

## WELCOME TO THE MOUNT'N MOVER COMMUNITY!

BlueSky Designs is proud to bring you its unique mounting solution. Our Mount is manufactured in the US by the same team that designed it with the input of therapists, people with disabilities and their families.

Mount'n Mover's ergonomic controls make adjustments easy. With its simple setup and memory lock positions; your Mount'n Mover will consistently lock in, move, and return to, any position that works for you. Its features include:

- ✦ Solid, secure mounting
- ✦ One-handed operation
- ✦ Low effort, easy access levers to unlock and reposition
- ✦ Quick and easy tilt adjustment, without tools
- ✦ Customizable lock positions—24 possibilities per joint
- ✦ Quick device change out

Take a minute to review the materials and parts included with your Mount'n Mover. We've included a manual to show how to operate and set up the Mount'n Mover. For up-to-date specific attachment instructions, check out our website: [www.mountnmover.com](http://www.mountnmover.com). We have an array of informational videos, step-by-step instructions and diagrams on the Support section of our site.

Our friendly staff is available for tech support and questions by email ([info@blueskydesigns.us](mailto:info@blueskydesigns.us)), phone 612-724-7002 or 1-888-724-7002 (US toll-free) and Skype (mountnmover).

Once you've installed the Mount'n Mover, please take time to connect with our community of users on our Facebook site. Our enthusiastic users can also offer helpful hints and suggestions.

Available since 2008, the Mount'n Mover began as a custom design for a teenager who needed to communicate and use her computer at the same time. This practical request produced a rudimentary movable mount which—coupled with Dianne's years of custom rehab engineering experience—became the precursor to the Mount'n Mover product which launched 10 years later.

Our goal is to provide a flexible and customizable solution to make it easier for you to do what you want to do. If you think there's something we could do to make it even better, let us know!

Thank you for choosing the Mount'n Mover,

*The BlueSky Team*

BlueSky Designs, Inc.  
2637 27<sup>th</sup> Ave South Suite 209 Minneapolis, MN 55406  
p: 612.724.7002 toll-free US: 888.724.7002  
f: 612.724.7004 toll-free fax US: 888.311.4435

e: [info@blueskydesigns.us](mailto:info@blueskydesigns.us)  
[www.mountnmover.com](http://www.mountnmover.com)  
[www.blueskydesigns.us](http://www.blueskydesigns.us)

## HELPFUL TOOLS:

**Mount'n Mover™**  
by BlueSky Designs  
**THE MOUNT MENTOR EVAL SHEET**

*Need help building a mounting system? Please complete the following steps and return to: [info@blueskydesigns.us](mailto:info@blueskydesigns.us)*

Step 1. Complete section A  
Step 2. Take photos as described in section B  
Step 3. Provide post length determined in section C  
Step 4. Complete wheelchair frame information in section D

*\* We will contact you with a quote. Additional support for installation and use is available via phone, Skype, or email.*

**A) Let's get started...first we need some information:**

**Contact Person**  
Organization \_\_\_\_\_  
Name \_\_\_\_\_  
Title \_\_\_\_\_  
Phone # \_\_\_\_\_  
Email \_\_\_\_\_

**Client (Optional)**  
Name/Initials \_\_\_\_\_  
Age \_\_\_\_\_  
Diagnosis \_\_\_\_\_

**Client Characteristics**  
How does client access their device?  
Direct Select ☐ Switch ☐ Eyegaze/Head Tracker ☐  
Light touch ☐ Medium touch ☐ Strong touch ☐  
If direct select:  
Will the client move R? ☐ Y ☐ N ☐  
If yes, what arm preference?  
Left ☐ Right ☐ Both ☐  
Can they cross midline? ☐ Y ☐ N ☐  
How does client drive Power Wheelchair?  
If applicable:  
Hand joystick on: Left ☐ Right ☐  
Chin joystick ☐ Head array ☐  
Prefer to mount on: Right side ☐ Left side ☐  
Is there an existing tray on w/c? ☐ Y ☐ N ☐  
**Preferred Mount(s):** [www.mountnmover.com](http://www.mountnmover.com)

**Device / Tray** *See website for Device Photo Graph*  
☐ SGD or AAC make/model \_\_\_\_\_  
☐ Does Device have QRM/UDS bracket? ☐ Y ☐ N ☐  
☐ Phone make/model/dimensions \_\_\_\_\_  
☐ Tablet/iPad Make \_\_\_\_\_ Model \_\_\_\_\_  
Dimensions: \_\_\_\_\_  
☐ Rotate portrait to landscape required? ☐ Y ☐ N ☐  
☐ Laptop Tray ☐ 12 x 16 Tray ☐ Y ☐ N ☐  
Require access to more than one device? ☐ Y ☐ N ☐  
If yes: ☐ At the same time ☐ Y ☐ N ☐  
☐ Change as needed ☐ Y ☐ N ☐  
☐ Two mounts: ☐ one post (double decker) ☐ Y ☐ N ☐  
☐ two posts ☐ Y ☐ N ☐

## 1. THE MOUNT MENTOR EVAL SHEET

**Mount'n Mover™**  
by BlueSky Designs  
**Order Sheet**

*Follow these steps to fully specify a Mount'n Mover system:*

Step 1: Choose a Mount'n Mover

**Dual Arm**  
Mount'n Mover  
H2-TQ-H\* ☐ H2-TQ-L\* ☐  
H2-TQ-H\* ☐ H2-TQ-L\* ☐

**Single Arm**  
Mount'n Mover  
M1-TQ-H\* ☐ M1-TQ-L\* ☐  
M1-TQ-H\* ☐ M1-TQ-L\* ☐

**Tilt'n Turner**  
Mount'n Mover  
M2-TQ-H\* ☐ M2-TQ-L\* ☐  
M2-TQ-H\* ☐ M2-TQ-L\* ☐

**EASY MOVERS**

**Easy Mover with Quick Connect Receiver (Dual and single arm)**  
EM2-QC-H\* ☐ EM2-QC-L\* ☐  
EM2-QC-H\* ☐ EM2-QC-L\* ☐  
EM1-QC-H\* ☐ EM1-QC-L\* ☐  
EM1-QC-H\* ☐ EM1-QC-L\* ☐

**Easy Mover with Tilt Plate (locking tilt plate)**  
EM2-LTP-H\* ☐ EM2-LTP-L\* ☐  
EM1-LTP-H\* ☐ EM1-LTP-L\* ☐

**Easy Mover with Tilt Plate (non-locking plate)**  
EM2-TP-H\* ☐ EM2-TP-L\* ☐  
EM1-TP-H\* ☐ EM1-TP-L\* ☐

**Quick Release Plate**  
EM2-QRP-H\* ☐ EM2-QRP-L\* ☐  
EM1-QRP-H\* ☐ EM1-QRP-L\* ☐

**Tilt Hinge Resistance**  
We recommend the High Resistance Hinge for heavier devices (5 lbs. [2.3 kg] or greater).  
The High Resistance Hinge allows device angle adjustment when the tilt lever is depressed. See **H** & **L** lever can be mounted below using the Tilt Lever lock.

**SIMPLE MOUNTS**

**Simple Mount Large**  
SM-LG-H\* ☐ SM-LG-L\* ☐  
SM-LG-H\* ☐ SM-LG-L\* ☐

**Simple Mount Small**  
SM-S-H\* ☐ SM-S-L\* ☐  
SM-S-H\* ☐ SM-S-L\* ☐

**Simple Mount with Quick Connect Receiver**  
SM-QC-H\* ☐ SM-QC-L\* ☐  
SM-QC-H\* ☐ SM-QC-L\* ☐

**Additional LSP Supports**  
Set of 4  
TRA-LSP-1/2 ☐  
TRA-LSP-1/2 ☐  
TRA-LSP-1/2 ☐  
TRA-LSP-1/2 ☐

January 2019 pg. 1 of 6

## 2. MOUNT'N MOVER ORDER SHEET

Find both of these tools on our website:  
[www.mountnmover.com](http://www.mountnmover.com)

# Table of Contents

Pages:

## Wheelchair Attachment Plates and Hardware:

3.	Wheelchair attachment overview	
4.	WC-AP .....	Wheelchair Adapter Plate
5.	WC-AAP .....	Angle Adjustment Plate
6.	WC-LAE .....	L-Angled Extension Plate
7.	WC-AP4 .....	Adapter Plate 4
8.	WC-AP2 .....	Adapter Plate 2
9.	WC-AP5 .....	Adapter Plate 5
10.	WB2 .....	Wheel Chair Bracket
11.	WC-R1 + WC-R7/8 .....	Round Clamp 1" and 7/8"
12.	WC-R1B-Set + WC-R7/8B-Set .....	Round Bridge Clamp 1" and 7/8"
13.	WC-TN .....	T-Nut
14.	WC-COVED-1" SET .....	1" Coved Spacers with hardware
15.	WC-COLLAR-1"SET .....	1" Collar Clamps with hardware

## Device Plates:

16 - 18.	DP-T2 .....	Tobii Dynavox I-12 and I-15
19.	DP-Multi1 .....	Tobii Dynavox EyeMobile, Mobi/Tellus, Rolltalk, AMDI, VESA, Smartbox
20 - 22.	DP-DV1 .....	Tobii Dynavox Maestro, V, Vmax, M3 T10
23 - 25.	DP-PRC1 .....	Prentke Romich ECO2, ECOpoint (with eyegaze), ECO-14, Vanguard, Pathfinder 2 and Accent 1400
26 - 27.	DP-UR .....	Universal Rotator
28.	DP-QCP .....	Quick Connect Plate
28.	DP-QCR .....	Quick Connect Receiver

## Additional Instructions

29.	EM1-QC-H .....	Easy Mover
30.	TC .....	Table Clamp
31.	SM-S-L-P12 .....	Simple Mount Small



**Please take pictures of your final set up for ease of ordering!**

# Wheelchair Attachment Overview

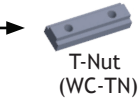
\* All plates are considered 'multi-use plates' and can be configured, combined, and used in a variety of ways.

## Anchor to Chair

\* What you use will depend on what kind of chair frame you have.

- Round tubing
- Slide track
- Hole-spacing
- Tie-Down

Start with a power or manual wheelchair



T-Nut  
(WC-TN)

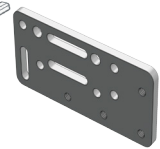
OR



Coved  
Spacers  
(WC-COVED)



Adapter Plate 5  
(WC-AP5)



Adapter Plate 2  
(WC-AP2)



Adapter Plate 4  
(WC-AP4)

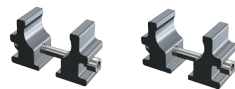


Round Clamp  
(WC-R1 or R7/8)

Span the bridge or collar clamps with a plate



Collar Clamps



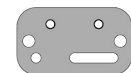
Bridge Clamps



(WC-AP5)



(WC-AP2)

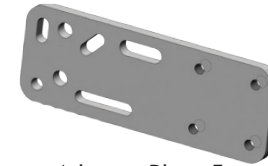


(WC-AP)

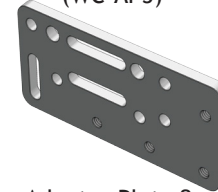


(WC-AP4)

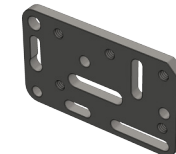
## OPTIONAL OFFSET



Adapter Plate 5  
(WC-AP5)



Adapter Plate 2  
(WC-AP2)



Adapter Plate 4  
(WC-AP4)

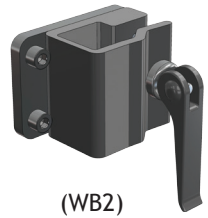


Angle Adjust Plate  
(WC-APAP)



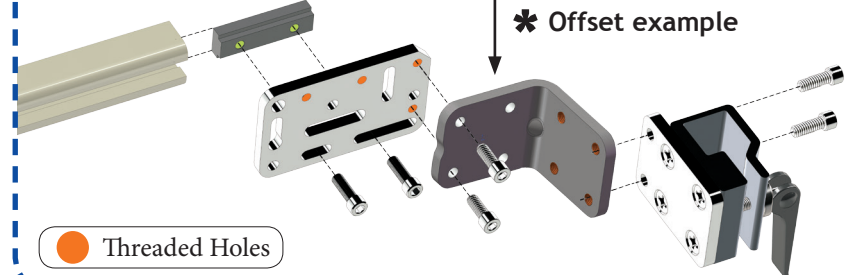
L-Angle Extension Plate  
(WC-LAE)

## Wheelchair Bracket



(WB2)

\* Offset example



Threaded Holes

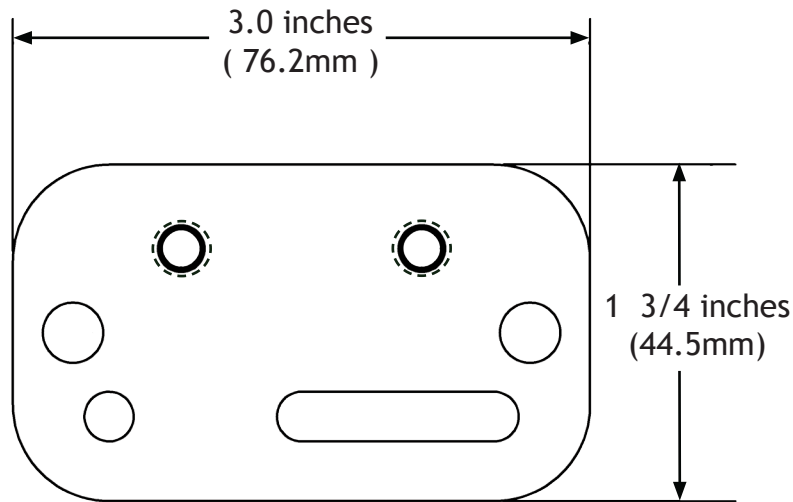
Plate to span across the bridge clamps or collar clamps



# **Wheelchair Attachment Plates and Hardware**

# Wheelchair Adapter Plate (WC-AP) Multi-Use Plate

Scale 1 : 1



## Plate to Plate Attachment Options

- Non-threaded hole to threaded hole = Good
- Non-threaded hole to non-threaded hole with nut = Good
- Threaded hole to threaded hole = Not good  
(will damage threads!)

## Hole Pairing Options

- Two holes = **BEST**
- Hole and slot (horizontal or vertical) = Good
- Slot and slot (both horizontal) = Good
- Two vertical slots = NOT GOOD! (could slip!)

1/4-28 Threaded Holes  
(Qty = 2 )

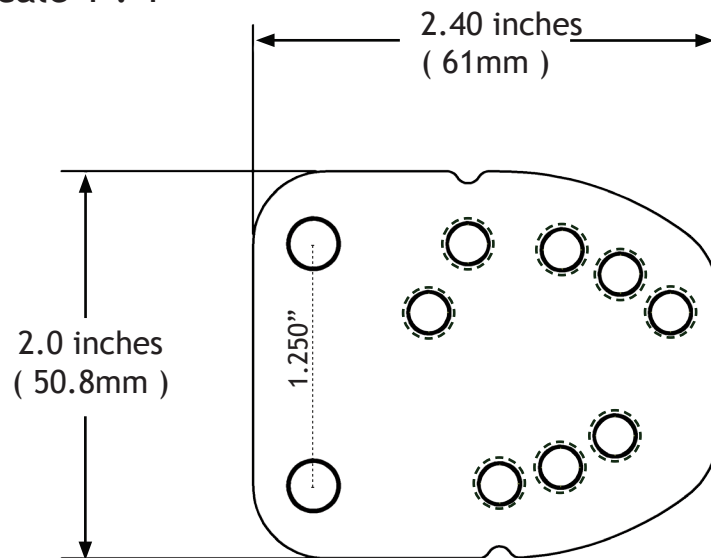
## Set Includes:

- (1) Wheelchair Adapter Plate
- (2) 1/4-28 x 2 1/4" Socket head cap screws
- (2) 1/4-28 Lock-nuts



# Angle Adjustment Plate (WC-AAP)

Scale 1 : 1



## Plate to Plate Attachment Options

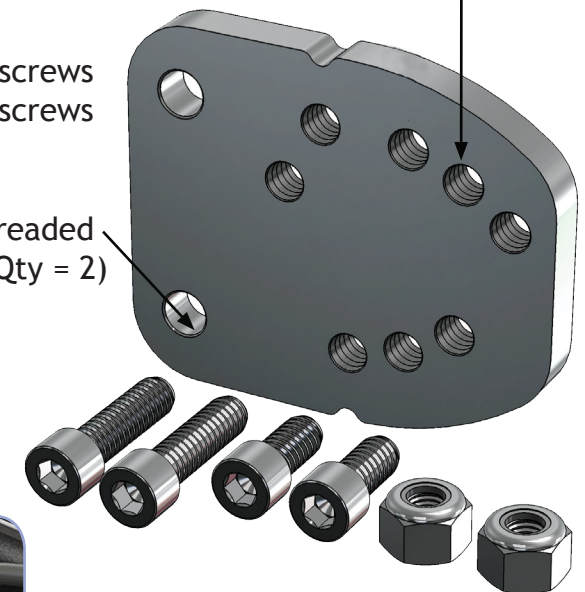
- Non-threaded hole to threaded hole = Good
- Non-threaded hole to non-threaded hole with nut = Good
- Threaded hole to threaded hole = Not good  
(will damage threads!)

## Set Includes:

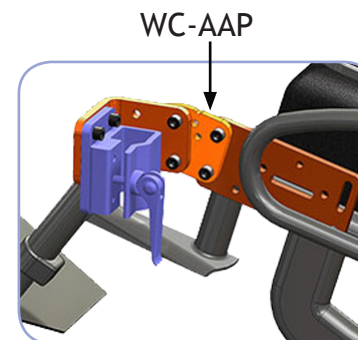
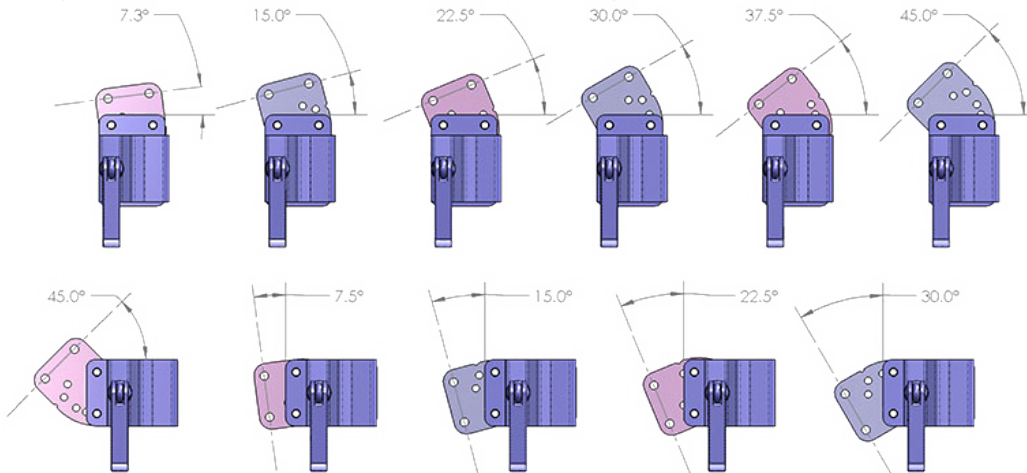
- (1) Angle Adjustment Plate
- (2) 1/4-28 x 7/8" Socket head cap screws
- (2) 1/4-28 x 1/2" Socket head cap screws
- (2) 1/4-28 Lock-nuts

1/4-28 Threaded Holes (Qty = 8)

Non-threaded holes (Qty = 2)



Angles available with the Angle Adjust Plate (AAP)  
(Tilts to accommodate WB2 at horizontal level)

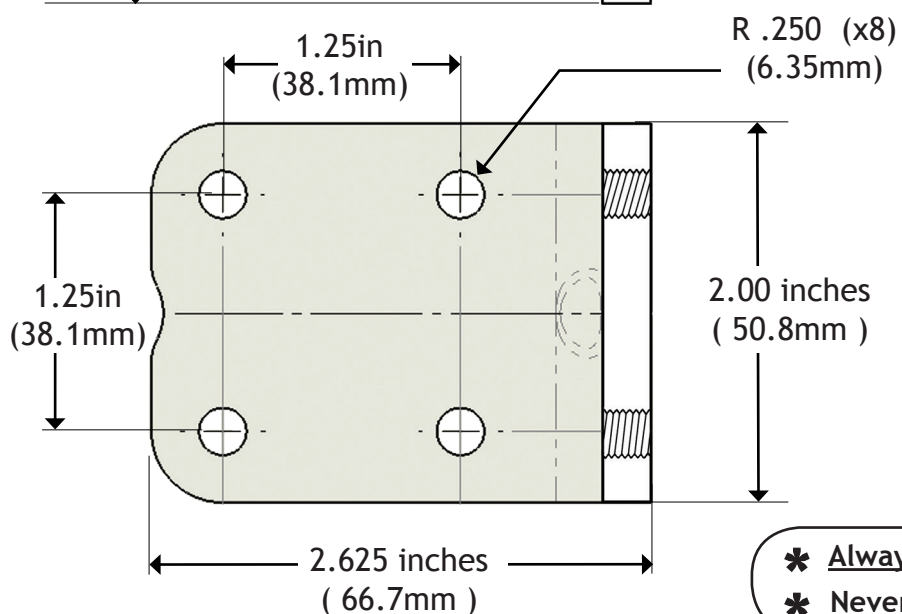
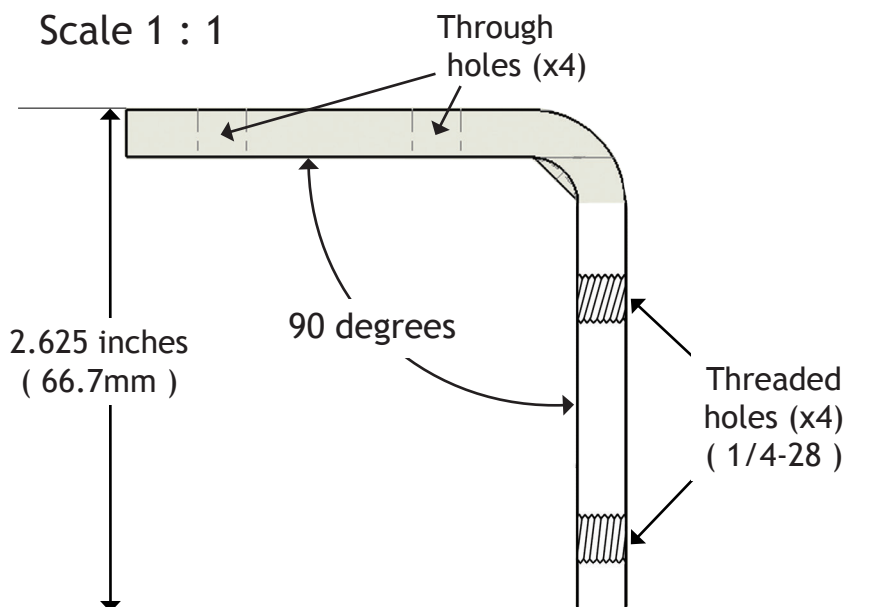


**Mount'n Mover™**  
by BlueSky Designs

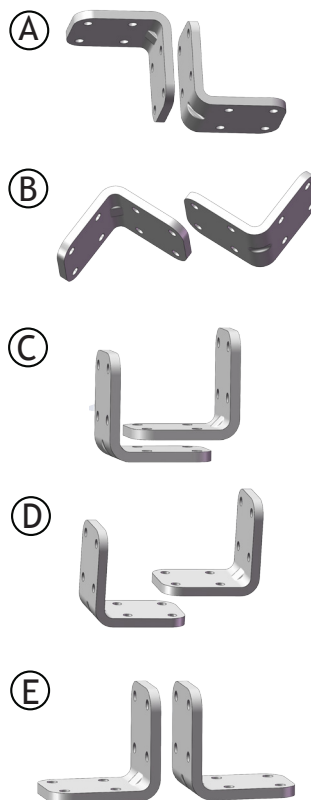
Product: WC-AAP, Angle Adjustment Plate  
Weight: 4.4 oz. (0.12 kg)

# L-Angled Extension Plate (WC-LAE)

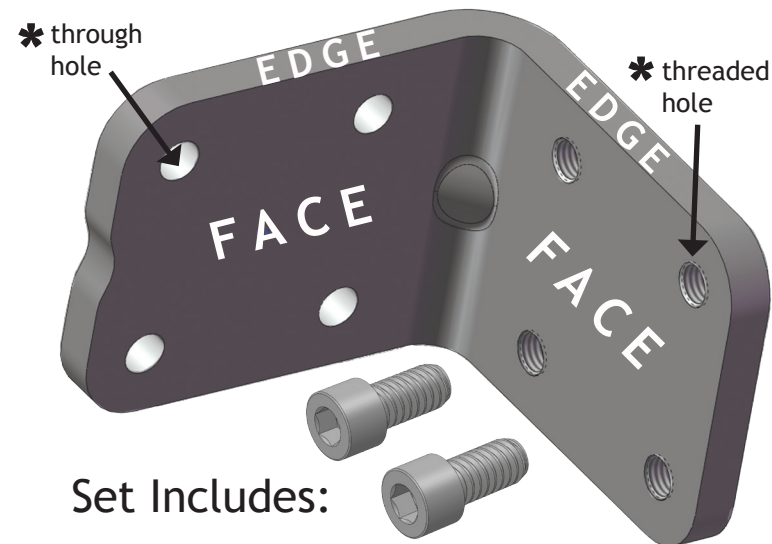
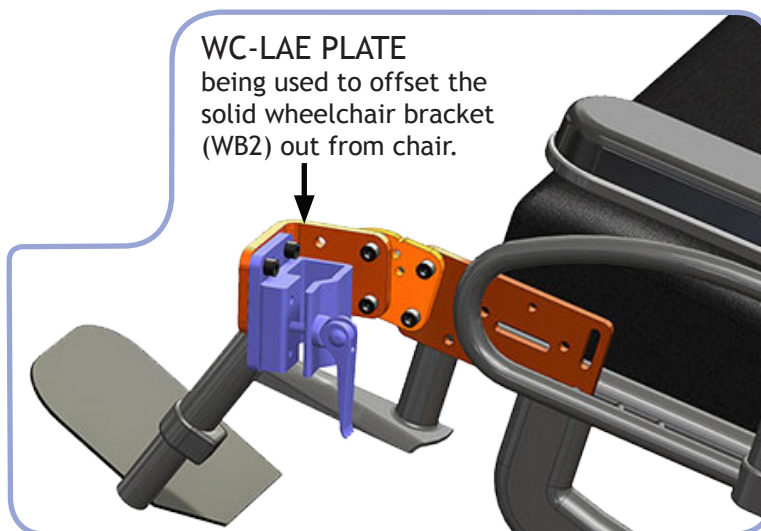
Scale 1 : 1



Possible configurations:



WC-LAE PLATE  
being used to offset the  
solid wheelchair bracket  
(WB2) out from chair.



Set Includes:

One L-Angled Extension Plate  
Two 1/4-28 x 1/2" Socket head cap screws

- \* **Always** attach [through hole] to [threaded hole]. Minimum of two bolts to attach plate
- \* **Never** attach [threaded hole] to [threaded hole]. Can damage threads!

**Mount'n Mover™**  
by BlueSky Designs

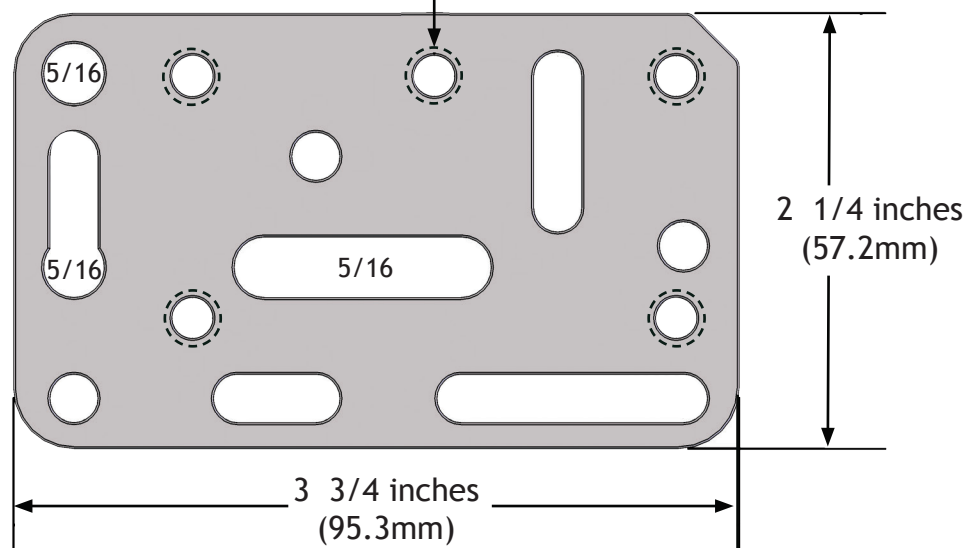
Product: WC-LAE, L-Angled Extension Plate  
Weight: 10.0 oz. (0.25 kg)



# Adapter Plate 4 (WC-AP4) Multi-Use Plate

Scale 1 : 1

1/4-28 threaded Hole (Qty = 5)



## Set Includes:

(1) Adapter Plate 4 (WC-AP4)

## Hardware - Plate to Plate Attachment

(2) 1/4-28 x 1/2" Socket head cap screws

## Hardware - Unitrack:

(4) M6-1 x 14 Socket head cap screws

(4) M6-1 x 10 Square nut

## Hardware - Through Holes in Frame:

(2) 1/4-28 x 1 5/8" Socket head cap screws

(2) 1/4-28 Lock nut

## WARNING!

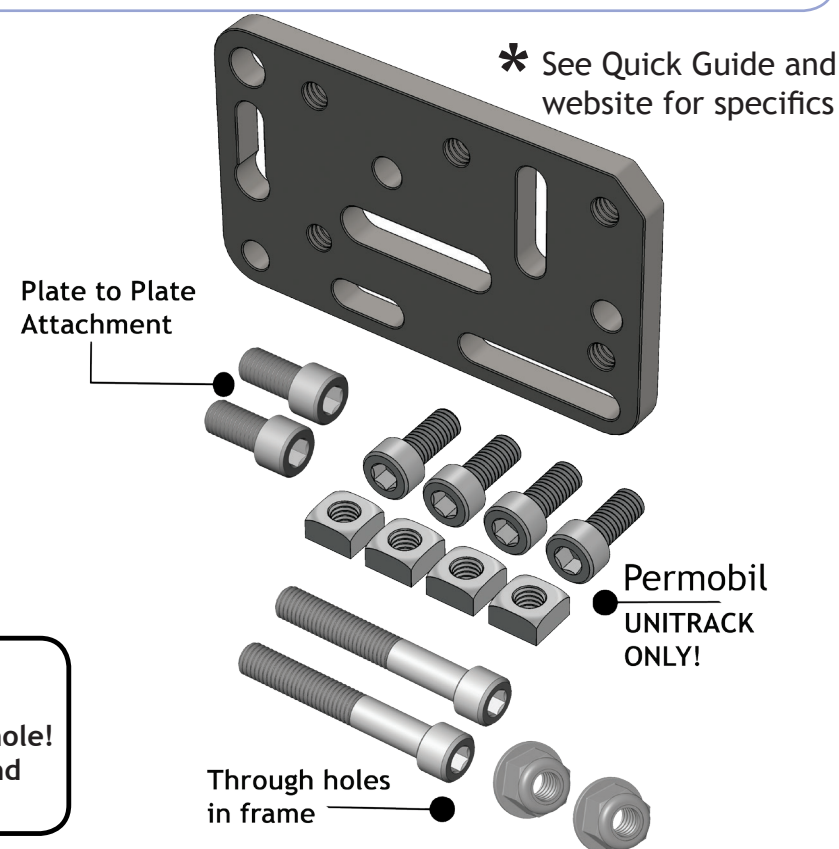
Never attach two plates via threaded hole to threaded hole! This damages the threads and the connection can loosen!

## Plate to Plate Attachment Options

- Non-threaded hole to threaded hole = Good
- Non-threaded hole to non-threaded hole with nut = Good
- Threaded hole to threaded hole = **Not good**  
(will damage threads!)

## Hole Pairing Options

- Two holes = **BEST**
- Hole and slot (horizontal or vertical) = Good
- Slot and slot (both horizontal) = Good
- Two vertical slots = **NOT GOOD!** (could slip!)

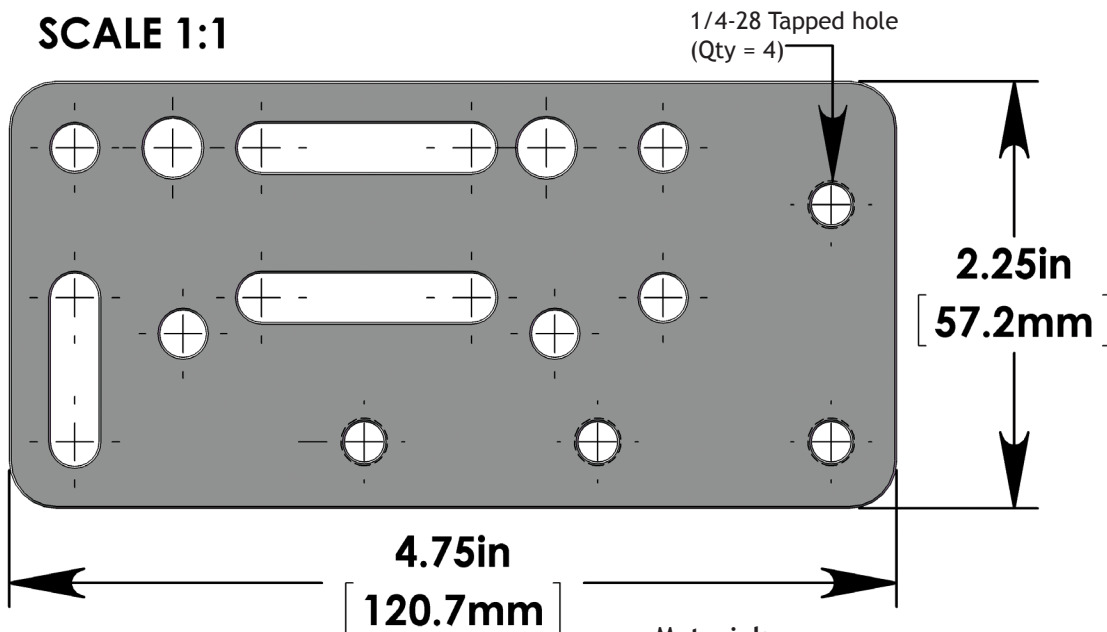


**Mount'n Mover™**  
by BlueSky Designs

Product: WC-AP4, Adapter Plate 4  
Weight: 7.3 oz. (0.21 kg)

# Adapter Plate 2 (WC-AP2) Multi-Use Plate

SCALE 1:1



**Material:**  
0.250" (6.35 mm) laser cut steel  
**Coating:**  
Electroless nickel

## Set Includes:

### (1) Adapter Plate 2 (WC-AP2)

#### Hardware - Plate to Plate Attachment

(2) 1/4-28 x 1/2" Socket head cap screws

#### Hardware - Through Holes in Frame:

(2) 1/4-28 x 1 5/8" Socket head cap screws

(2) 1/4-28 lock nut

#### Hardware - Unitrack:

(4) M6-1 x 14 Socket head cap screws

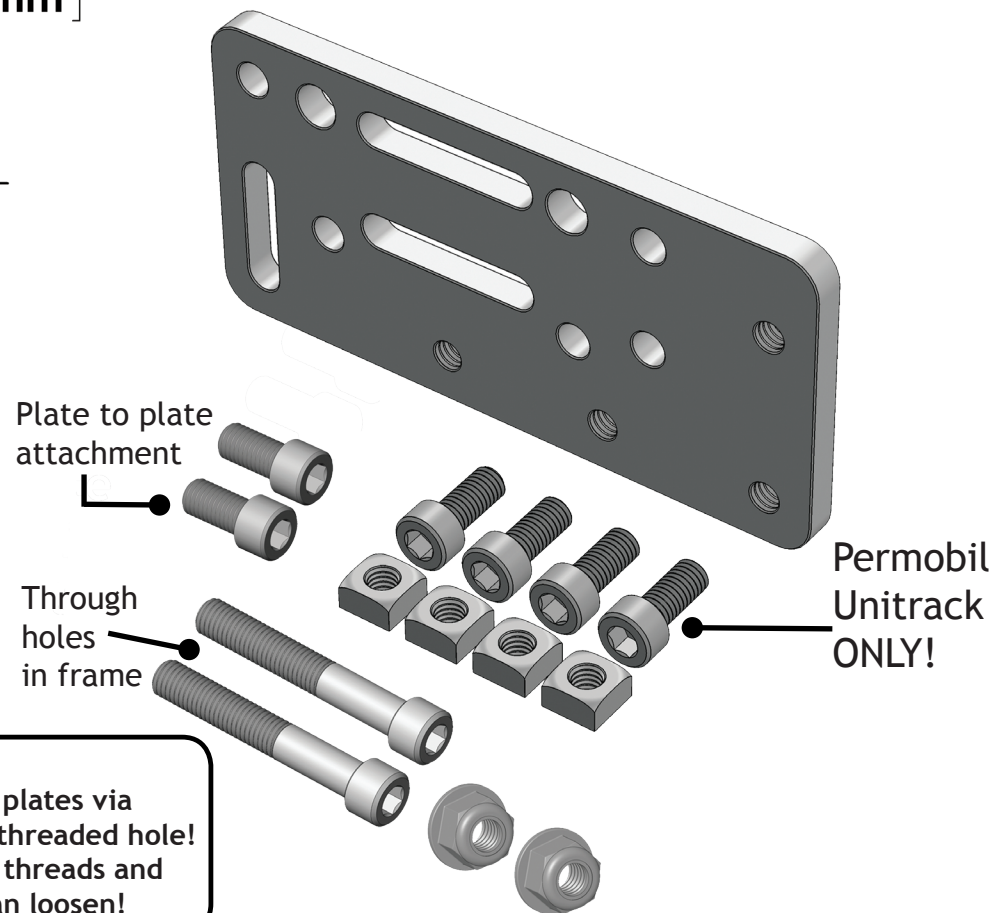
(4) M6-1 x 10 Square nut

## Plate to Plate Attachment Options

- Non-threaded hole to threaded hole = Good
- Non-threaded hole to non-threaded hole with nut = Good
- Threaded hole to threaded hole = Not good  
(will damage threads!)

## Hole Pairing Options

- Two holes = BEST
- Hole and slot (horizontal or vertical) = Good
- Slot and slot (both horizontal) = Good
- Two vertical slots = NOT GOOD! (could slip!)



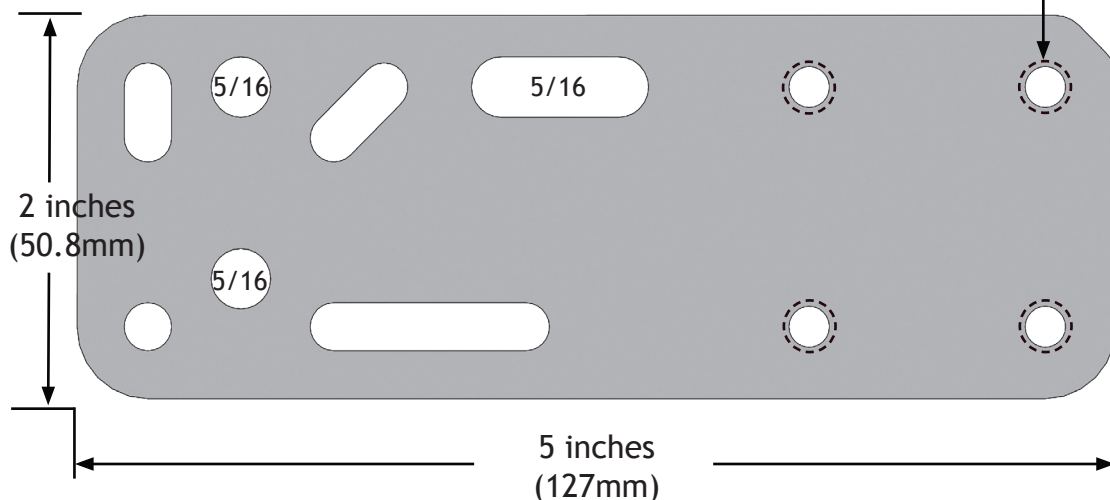
## WARNING!

Never attach two plates via threaded hole to threaded hole! This damages the threads and the connection can loosen!

# Adapter Plate 5 (WC-AP5) Multi-Use Plate

Scale 1 : 1

1/4-28 threaded Hole (Qty = 4)



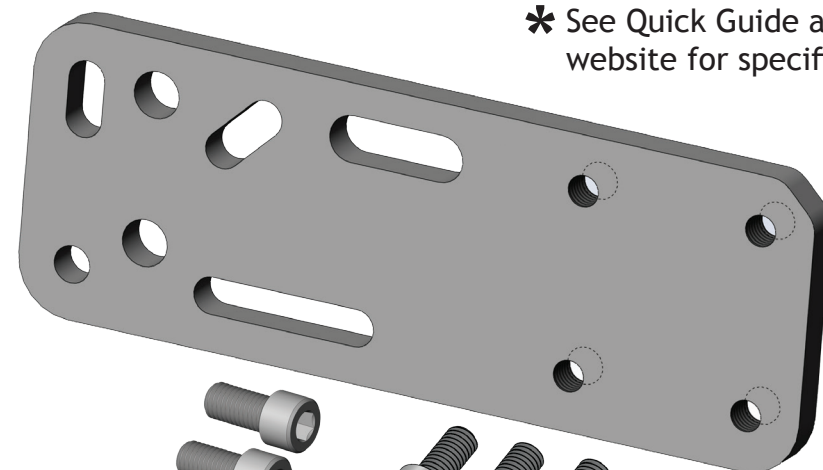
## Plate to Plate Attachment Options

- Non-threaded hole to threaded hole = Good
- Non-threaded hole to non-threaded hole with nut = Good
- Threaded hole to threaded hole = **Not good**  
(will damage threads!)

## Hole Pairing Options

- Attaching with two holes = **BEST**
- Hole and slot (horizontal or vertical) = Good
- Slot and slot (both horizontal) = Good
- Two vertical slots = **NOT GOOD!** (could slip!)

✱ See Quick Guide and website for specifics



## Set Includes:

(1) Adapter Plate 5 (WC-AP5)

### Hardware - Plate to Plate Attachment

(2) 1/4-28 x 1/2" Socket head cap screws

### Hardware - Through Holes in Frame:

(2) 1/4-28 x 1 5/8" Socket head cap screws

(2) 1/4-28 lock nut

### Hardware - Unitrack:

(4) M6-1 x 14 Socket head cap screws

(4) M6-1 x 10 Square nut

### WARNING!

Never attach two plates via threaded hole to threaded hole! This damages the threads and the connection can loosen!

Plate to Plate Attachment

Through holes in frame

Permobil  
**UNITRACK**  
ONLY!

**Mount'n Mover™**  
by BlueSky Designs

[mountnmover.com](http://mountnmover.com)

**Product:** WC-AP5, Adapter Plate 5

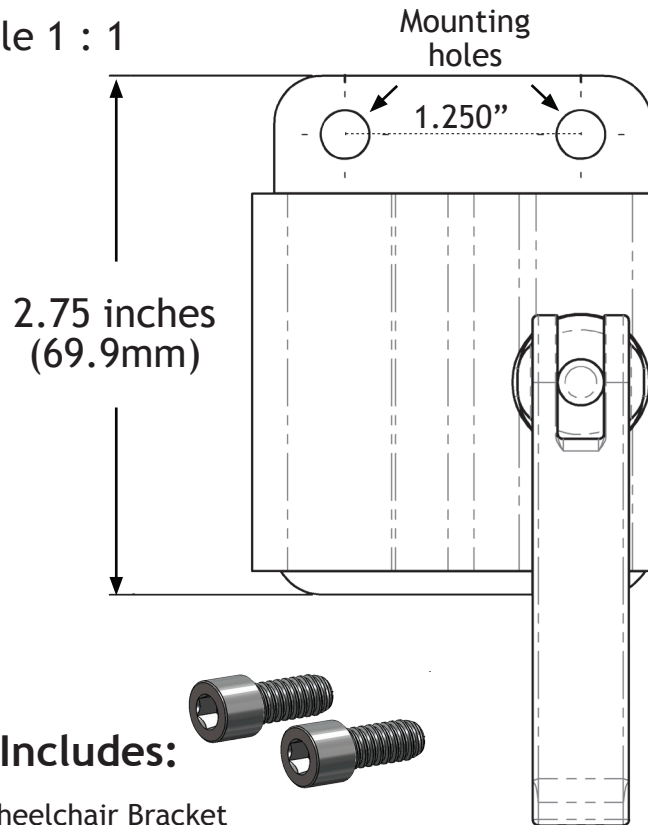
**Weight:** 10.6 oz. (0.3 kg)

1-888-724-7002 (toll free) or 1-612-724-7002

pg 1 of 2

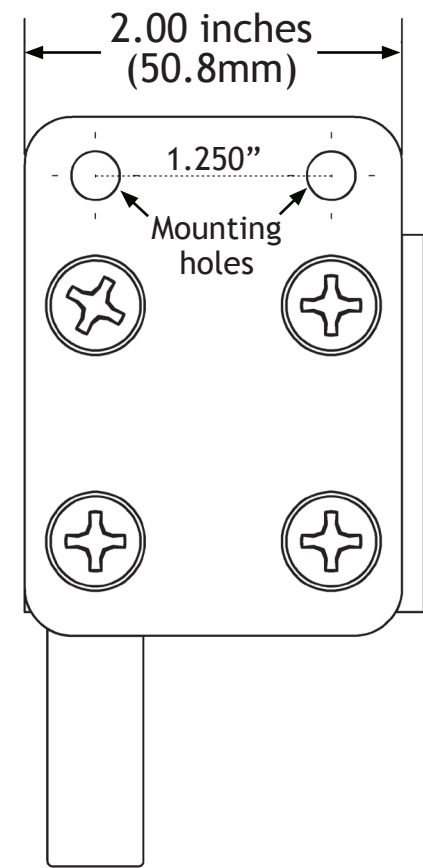
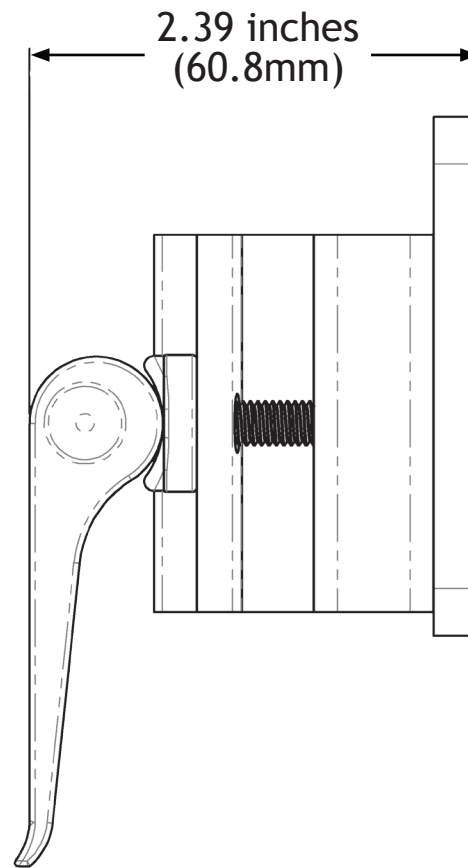
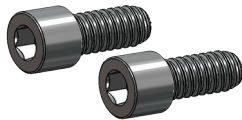
# Wheelchair Bracket (WB2)

Scale 1 : 1

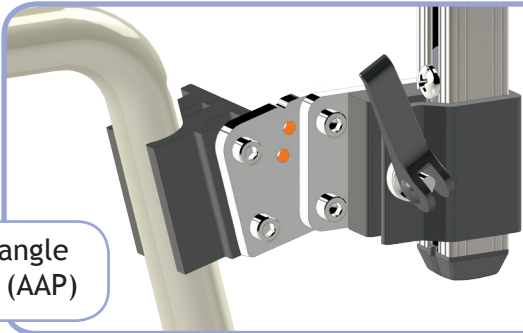


## Set Includes:

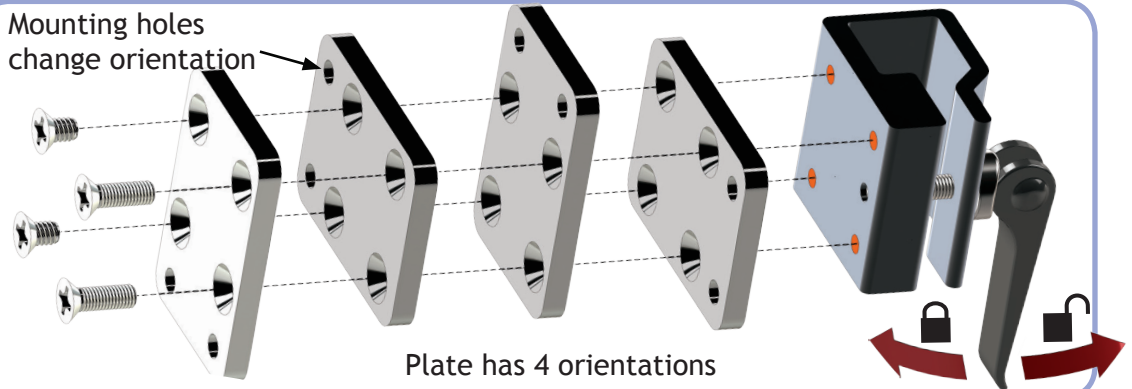
- (1) Wheelchair Bracket
- (2) 1/4-28 X 0.5" Socket Head Screws



WB2 attached to angle adjustment plate (AAP)



Mounting holes change orientation



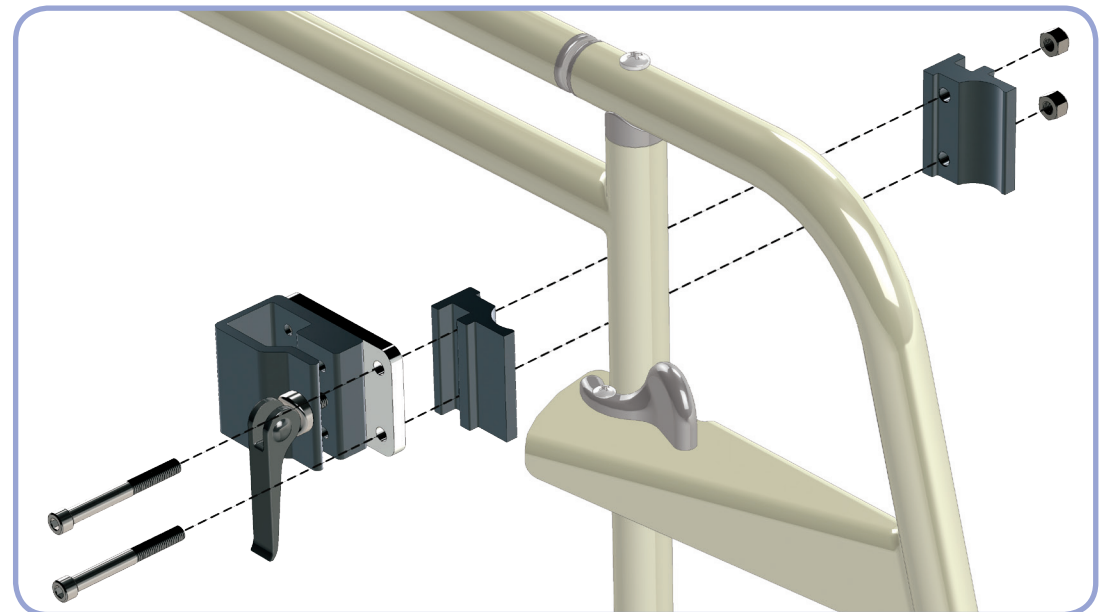
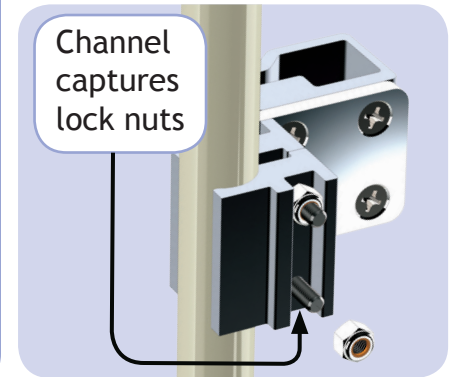
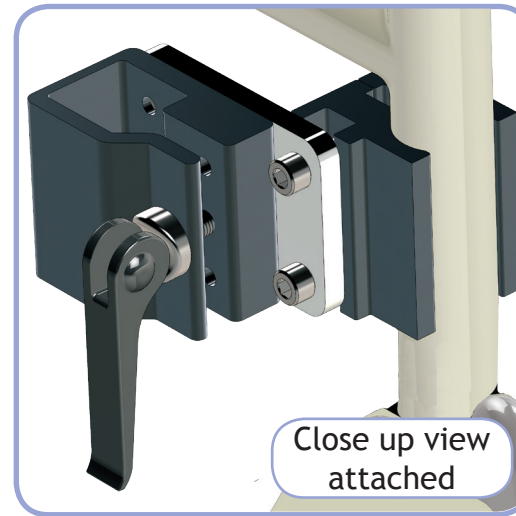
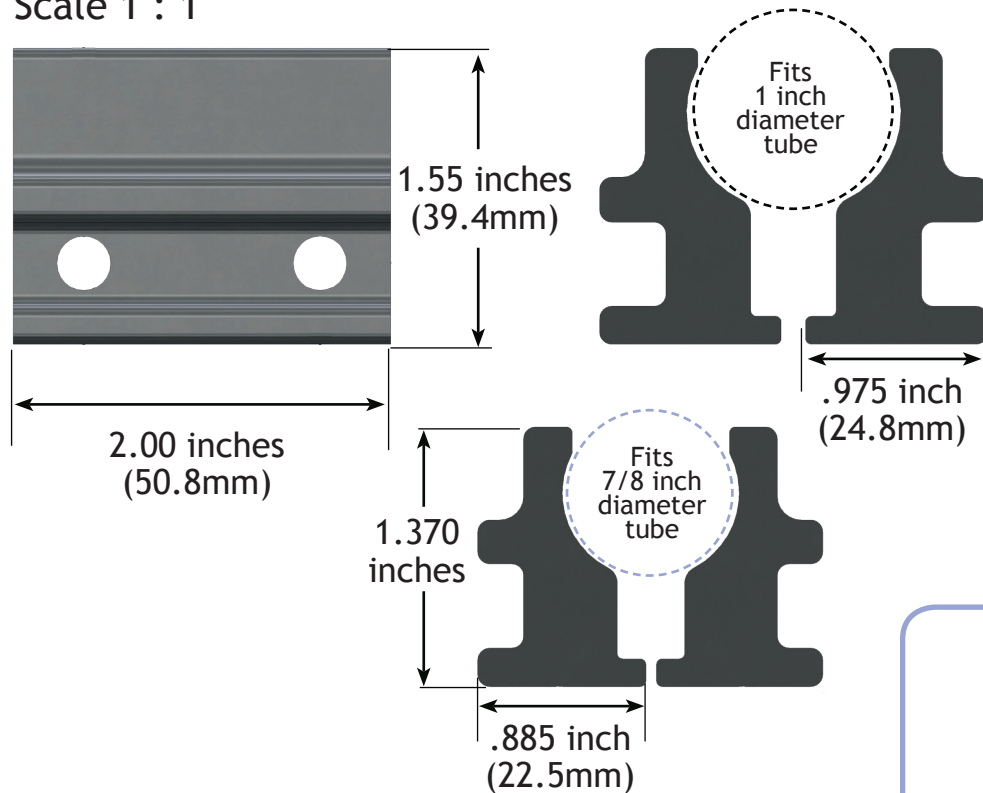
**Mount'n Mover™**  
by BlueSky Designs

**Product:** WB2, Wheelchair Bracket  
**Weight:** 11.6 oz. (0.33 kg)



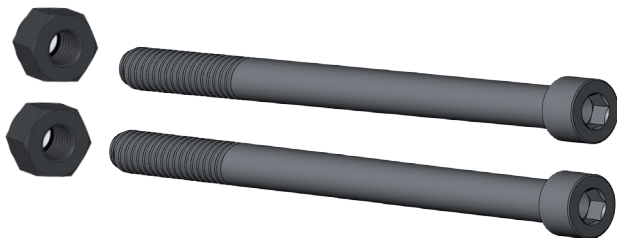
# Round Clamp (WC-R1) or (WC-R7/8)

Scale 1 : 1



## Set Includes:

- (2) Clamps
- (2) 1/4-28 x 2 1/4" Socket Head Cap Screws
- (2) 1/4-28 Lock-nuts



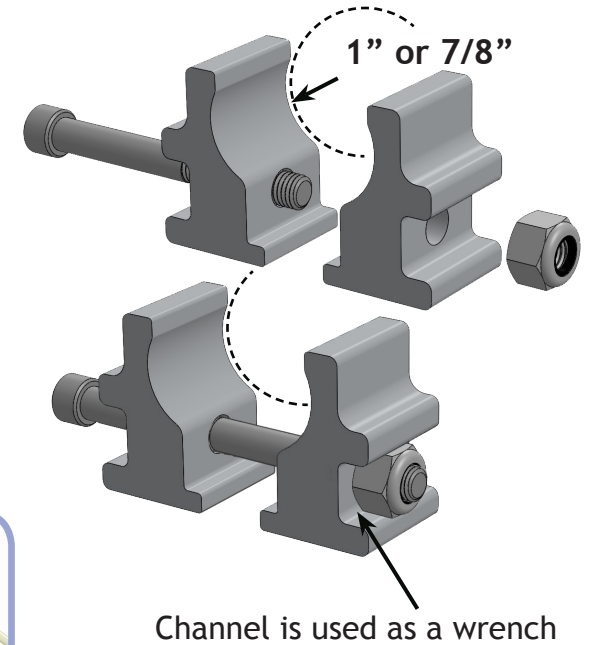
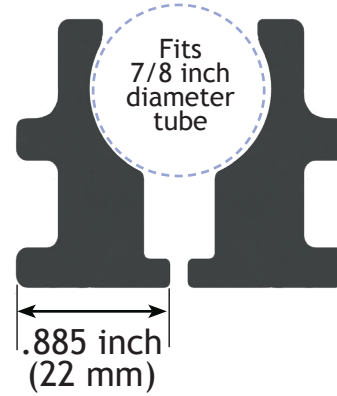
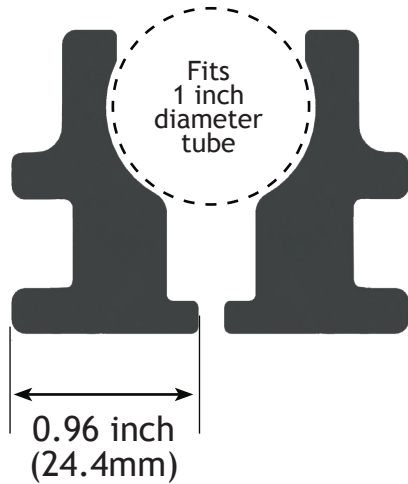
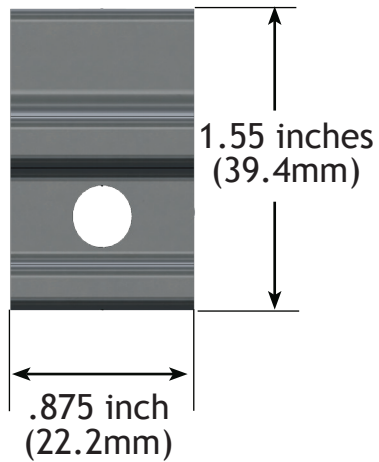
**Mount'n Mover™**  
by BlueSky Designs

**Product:**  
**Weight:**

WC-R1" or WC-R7/8" Round Clamp  
5.6 oz. (0.16 kg)

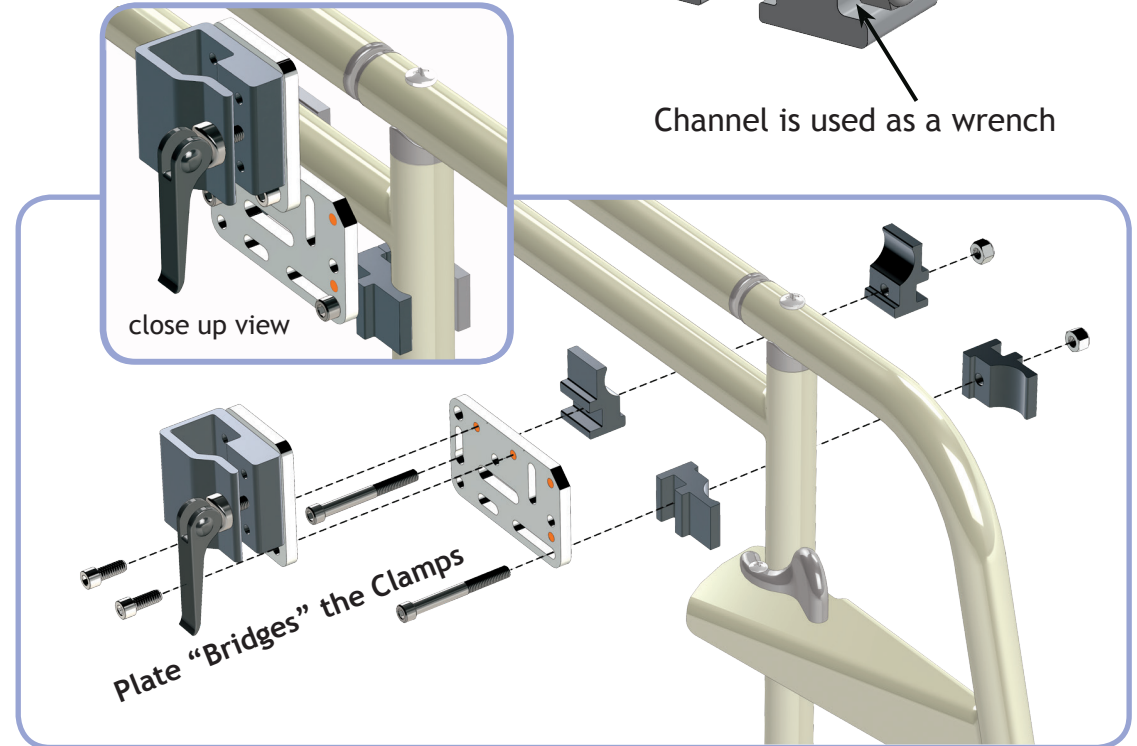
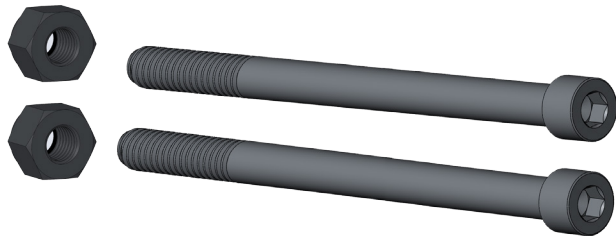
# Round Bridge Clamp (WC-R1B-set) or (WC-R7/8B-set)

Scale 1 : 1



## Set Includes:

- (4) Clamps [1 set -1"] or [1 set-7/8"]
- (2) 1/4-28 x 2 1/4" Socket Head Cap Screw
- (2) 1/4-28 Lock-nut



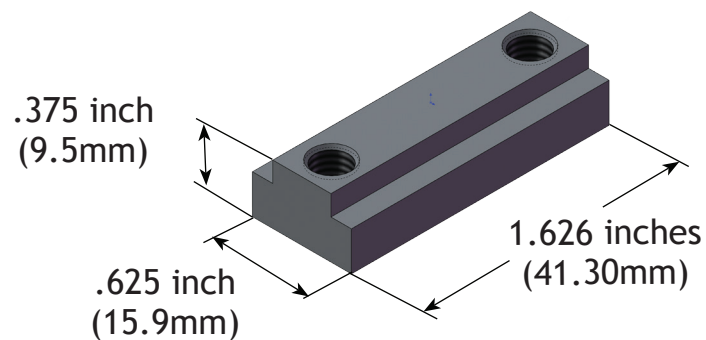
**Mount'n Mover™**  
by BlueSky Designs

**Product:**  
**Weight:**

WC-R1"B or WC-R7/8"B, Round Bridge Clamp  
2.5 oz. (0.07 kg)

# T-Nut (WC-TN) (for use with slide track)

Scale 1 : 1

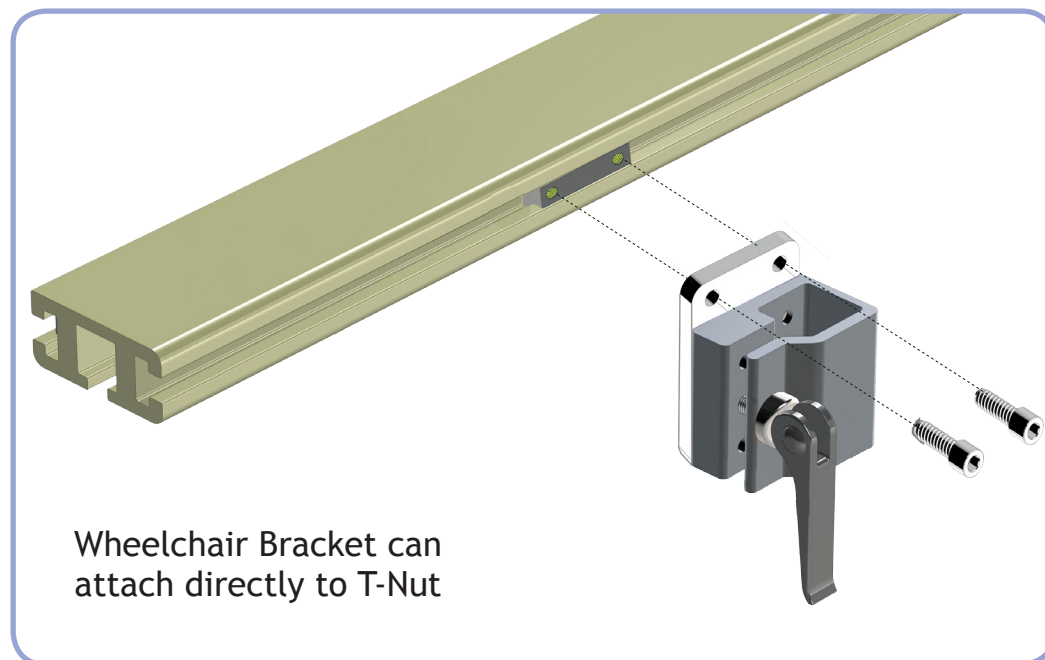
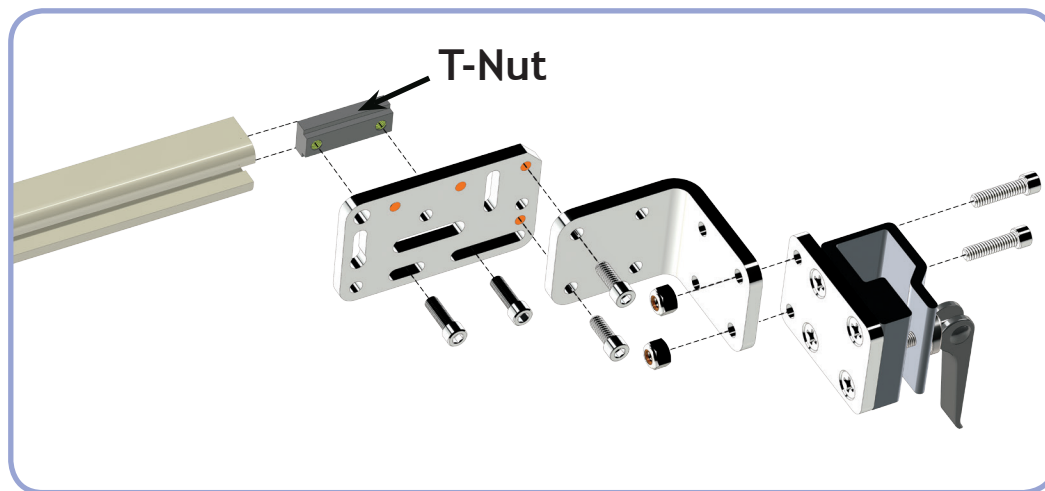


## Set Includes:

- (1) T-nut
- (2) 1/4-28 x 5/8" Socket Head Cap Screw



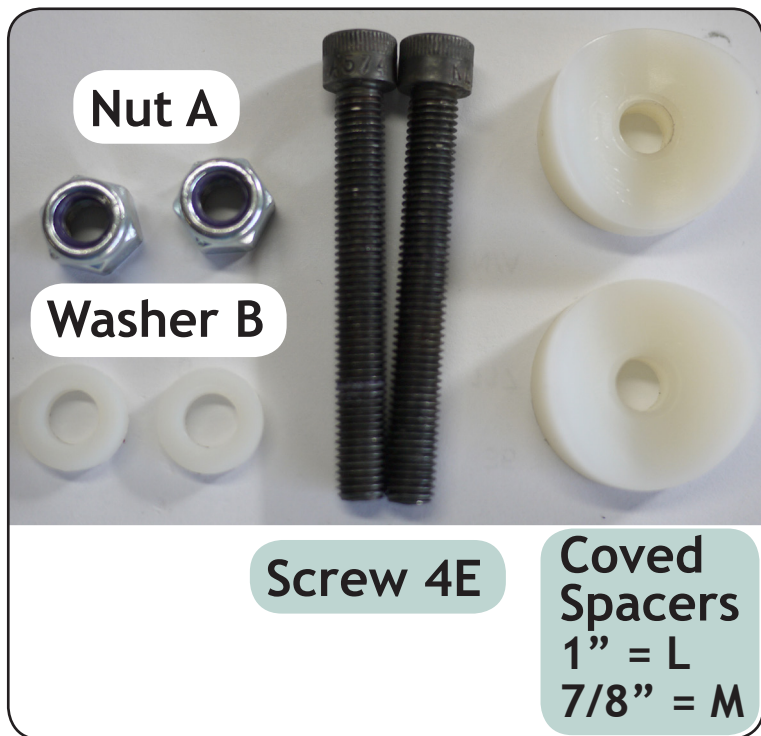
\* T-Nut prior to May of 2015 used 1/4-20 screws



**Mount'n Mover™**  
by BlueSky Designs

**Product:** WC-TN, T-Nut  
**Weight:** 3.0 oz. (0.09 kg)

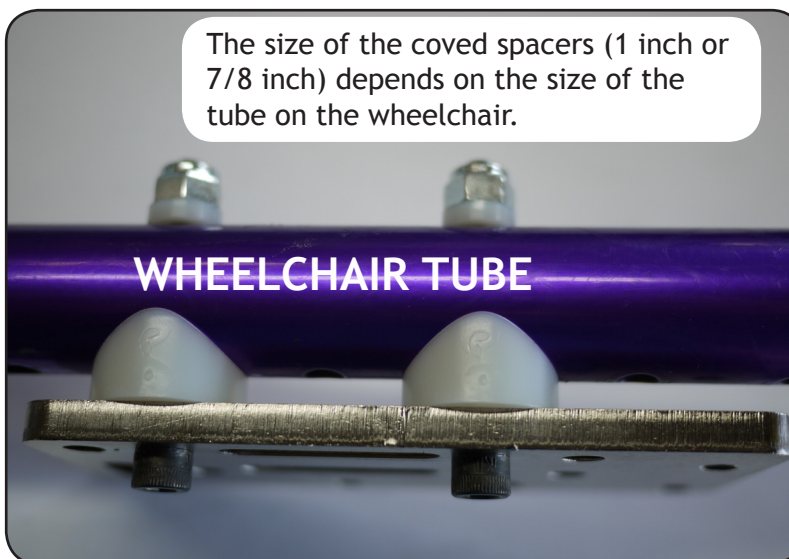
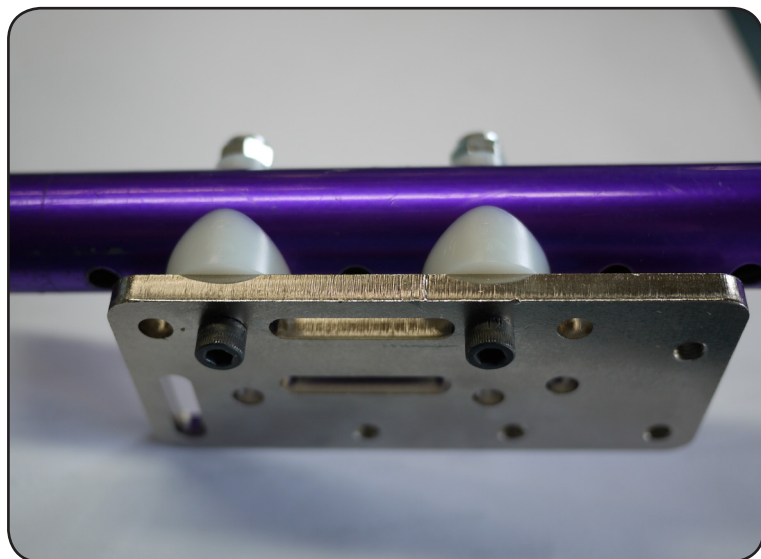
## COVERED SPACERS 1" (SPACER L) AND 7/8" (SPACER M)



### Bill of Materials:

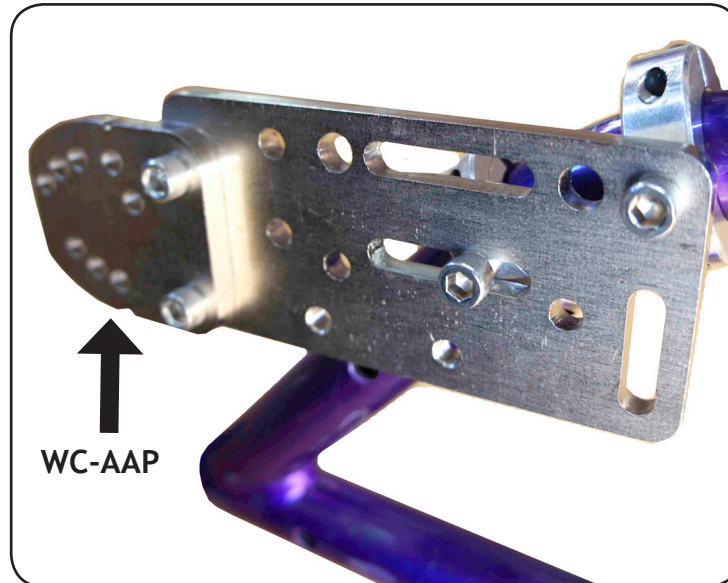
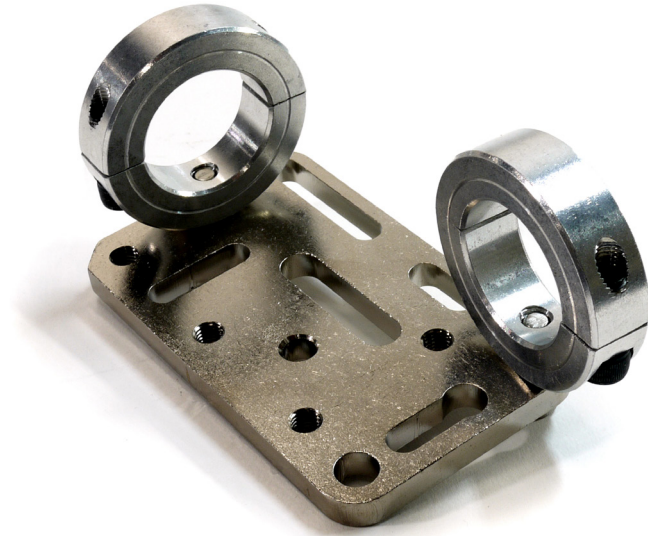
- Coved Spacer L (1 inch) set  
OR
- Coved Spacer M (7/8 inch) set
- Nylon Washer B (x2)
- Screw 4E (x2)
- Lock Nut A (x2)

## USING THE COVERED SPACERS TO ATTACH THE WHEELCHAIR PLATE





# Collar Clamps (Set of two 1" clamps)



Mounting on a curve will usually require an WC-AAP (angle adjust) plate to correct the angle to vertical for the WB2 (wheelchair bracket). This will allow the post to be vertical.

Collar clamps come in many sizes. If you need a different size we will need to know the circumference of the tube you will be attaching to.

# Device Plates

**Attaches to:** Devices I-12 and I-15

Device plate  
DP-T2 to  
device

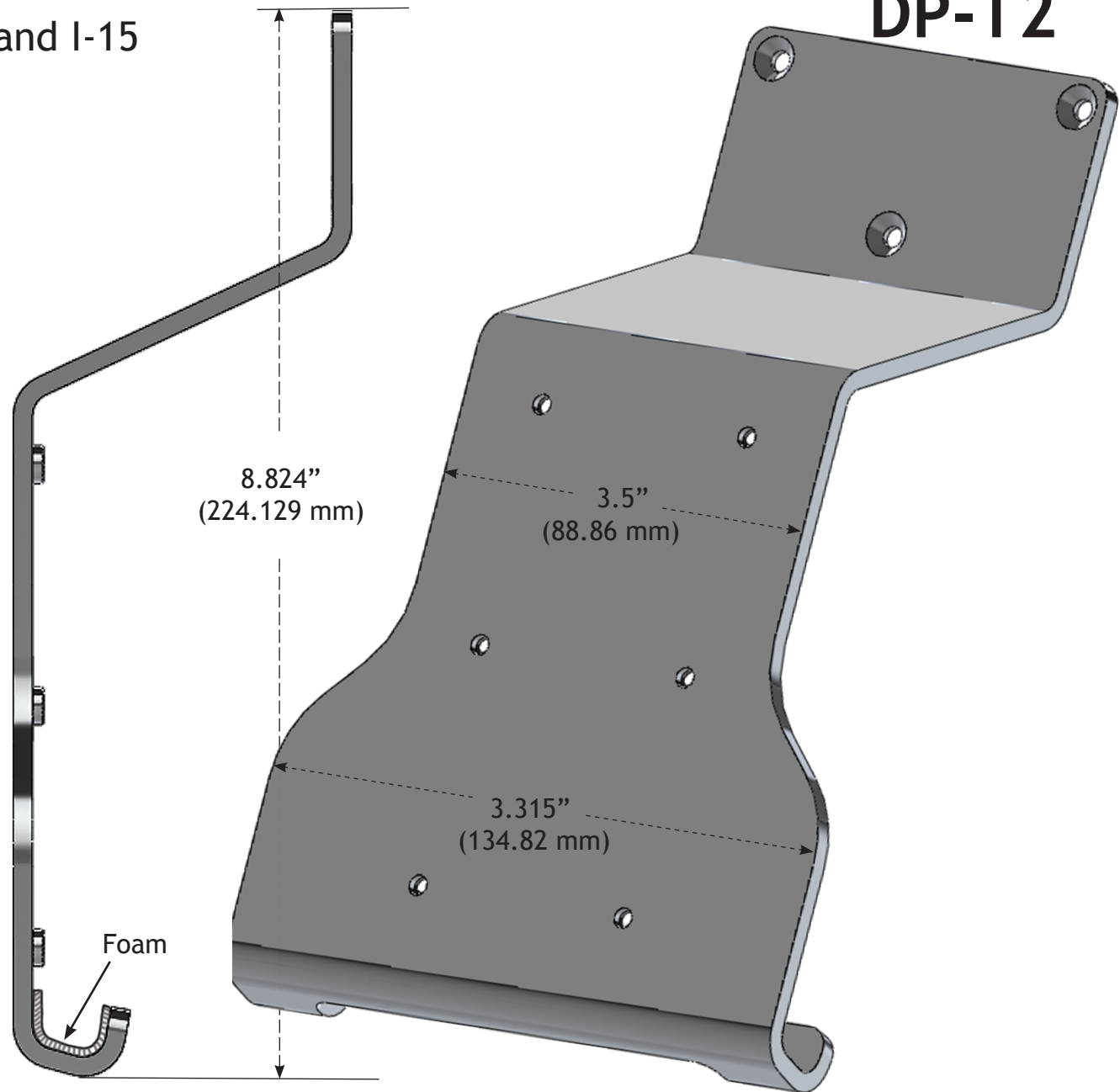


M4-.7 x 10 mm (X3)

Quick release  
plate (QRP) to  
DP-T2



8-32 x 3/8" (x4)



# Tobii I Device Plate Attachment Instructions

## DP-T2

Place your Tobii face down. Remove the existing plate.



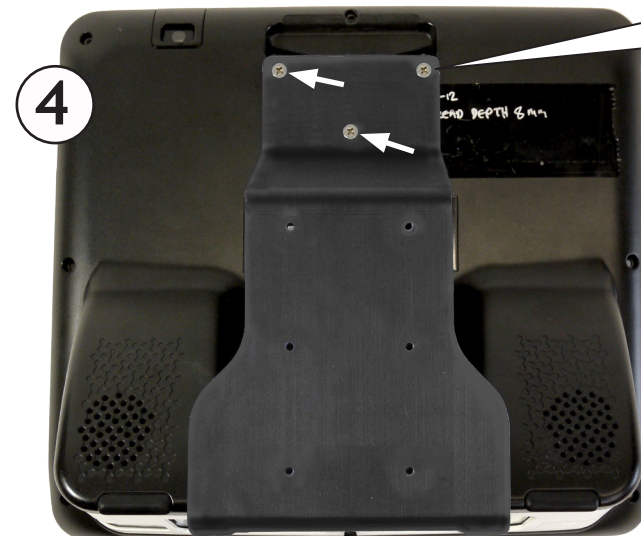
Plate removed



Place the DP-T2 plate on the device so the two hooks fit into the grooves at the base of the device (see image below left) and the three countersunk holes on the plate align with the three holes on the device where you just removed the original plate (see image below right).



Grooves  
in device

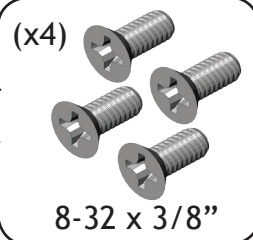
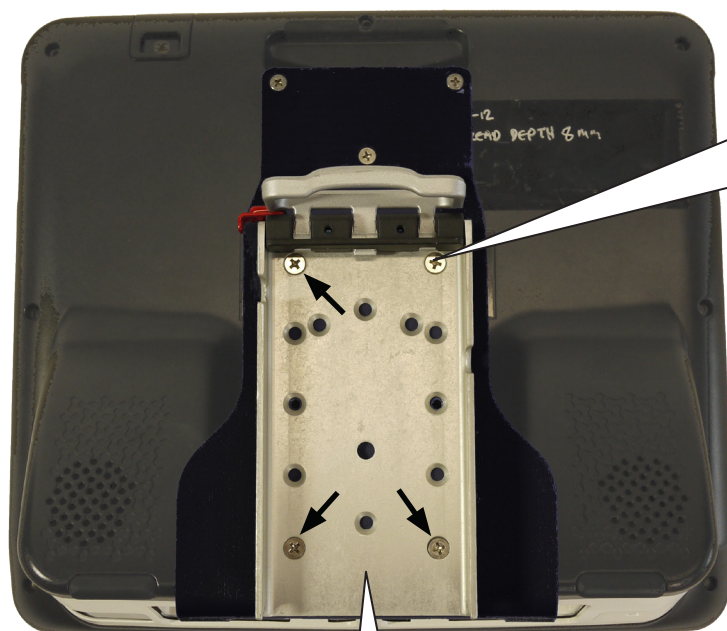


Attach device plate to your Tobii 1 using the screws from the baggie labeled “DP-T2 to Device” (see image 4).



## Attach the Quick Release Plate (QRP)

DP-T2



Attach the QRP to the device plate using the screws from the included bag labeled "QRP to DP-T2"

Tobii I device mounted to Mount'n Mover with the quick release plate



Available option using the Universal Rotator (DP-UR) in addition to the QRP. Nylon spacers included with DP-UR.



# DP-Multi1

## Attaches to:

Mobi/Tellus//Rolltalk/AMDI/Tobii Dynavox  
Eyemobile (Mini)/VESA (50,75,100mm)/  
Smartbox

### A) Mobi (Jabbla)



(Screw **NNN** x4)

M4-.7 x 16mm length

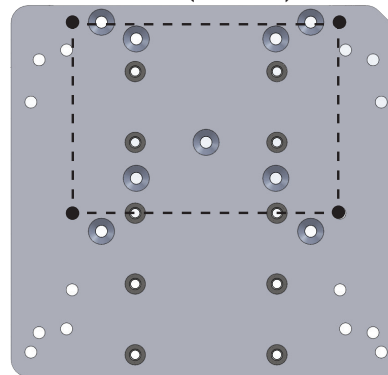


(Nylon Spacer **H** x4)

3/8" OD x 1/8" thick

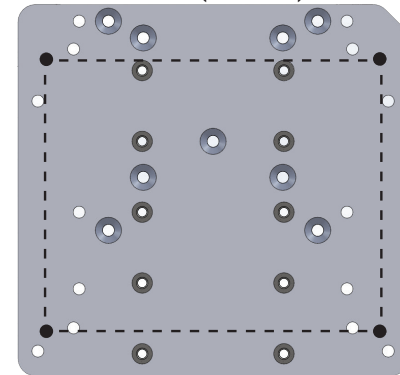
A

Mobi (Jabbla)



B

Tellus (Jabbla)



### B) Tellus (Jabbla) (same 4 screws [NNN] and 4 spacers [H] as Mobi)

### C) Rolltalk (Abilia)



(Screw **MMM** x4)

M4-.7 x 10mm length

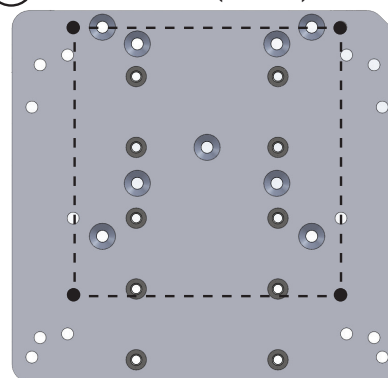


(Steel washer **L** x4)

14mm OD x 1.8mm thick

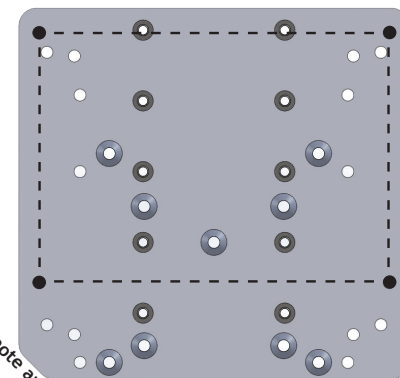
C

Rolltalk (Abilia)



D

AMDI



### D) AMDI (same 4 screws [MMM] as Rolltalk - no steel washers)

### E) Tobii Dynavox Eyemobile, Eyemobile Mini



(Screw **TT** x3)

M4-.7 x 25mm length

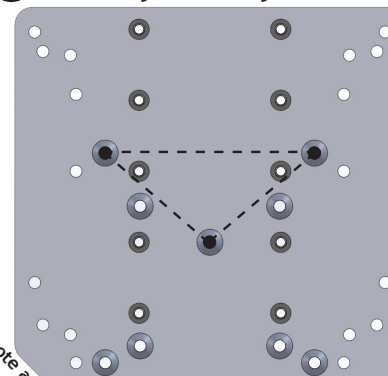


(Nylon Spacer **K** x3)

1/4" OD x 11/16" length

E

Tobii Dynavox Eyemobile



### F) VESA (50,75,100mm), Smartbox

- Smartbox and 100mm use screw **MMM**



(Screw **MMM** x4)

- 50 and 75mm VESA



(Screw **PP** x4)

M4-.7 x 10mm length

All spacers and washers are placed between device and device plate

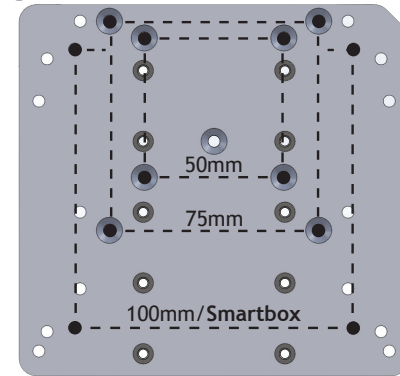
Hardware shown actual size

Quick release plate (QRP) to device plate  
8-32 x 1/4" x4

note angle

F

VESA/Smartbox



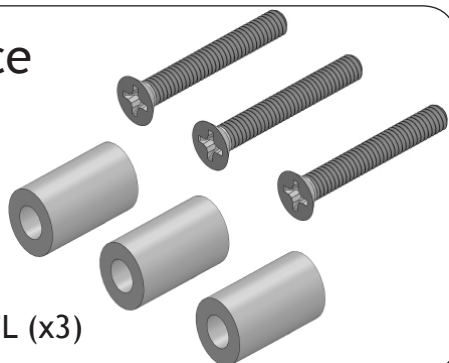
## Attaches to:

Maestro, V, Vmax, M3, and T10 (Contact us for other models)

# DP-DV1

Maestro to device  
plate

8-32 x 1" (x3)  
1/4"ID x 1/2"OD x 5/8"L (x3)



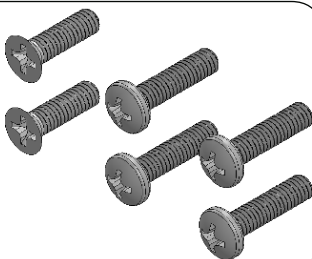
V & Vmax to  
device plate

8-32 x 3/8" (x2)



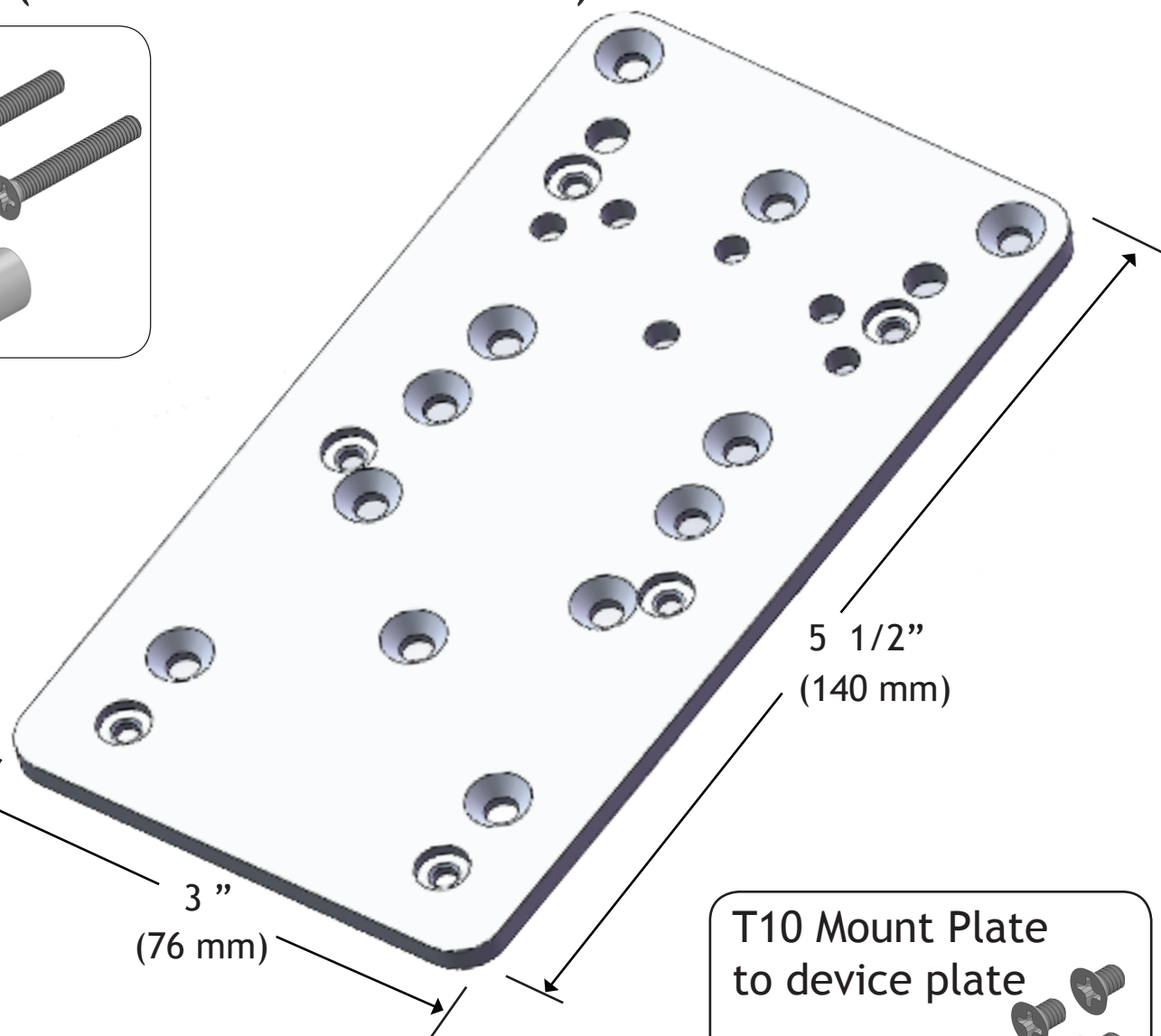
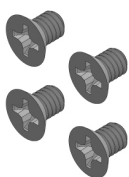
DV4 & MT4 to  
device plate

M4 x 16mm (x4)  
M4 x 14mm (x2)



Quick release  
plate (QRP)  
to device  
plate

8-32 x 1/4" (x4)



T10 Mount Plate  
to device plate

8-32 x 1/4" (x3)



**Mount'n Mover™**  
by BlueSky Designs

Product: DP-DV1, Dynavox  
Weight: 3.8 oz. (0.11 kg)

## Maestro



align  
spacers



attach  
device  
plate  
8-32 x 1" (x3)



attach  
quick  
release  
plate  
8-32 x 1/4" (x4)

\*Stand for V or Vmax is no longer usable once device plate is in place

V

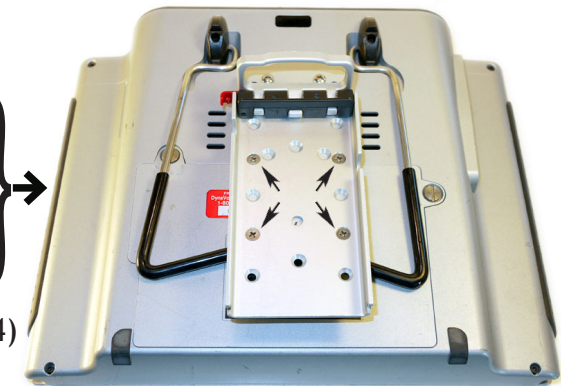


← attach  
device  
plate →  
8-32 x 3/8" (x2)



← attach  
quick  
release  
plate →  
8-32 x 1/4" (x4)

Vmax



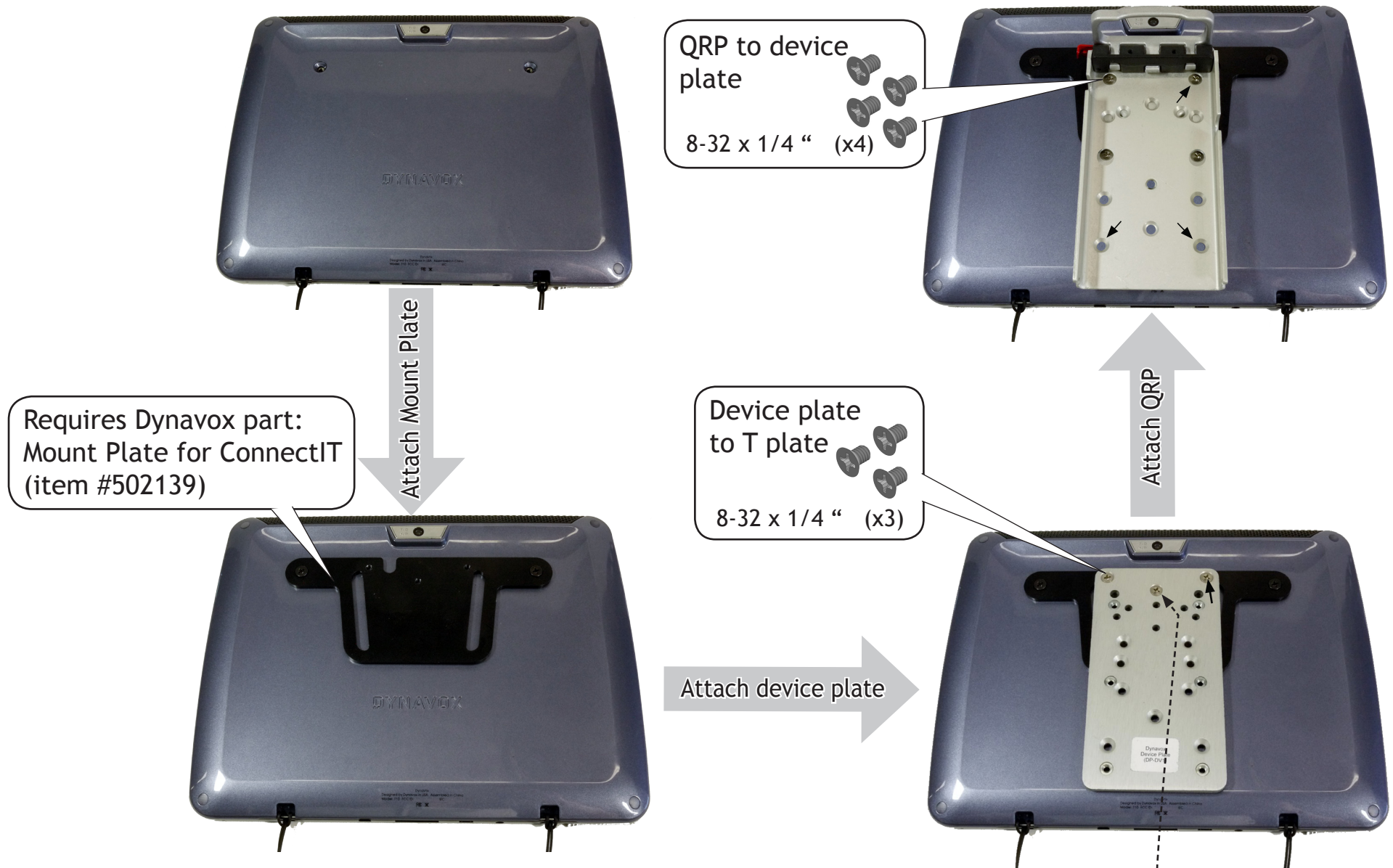
\*additional devices shown on our website



# Dynavox T10

\*Order T10 with Mount Plate (not supplied by BlueSky Designs)

DP-DV1



\*If your DV1 plate does not have this  
3rd hole, then attach with 2 screws

## Attaches to:

ECO2, ECOpoint (with eyegaze),  
ECO-14, Vanguard, Pathfinder 2 and Accent 1400

DP-PRC1

### Device to device plate

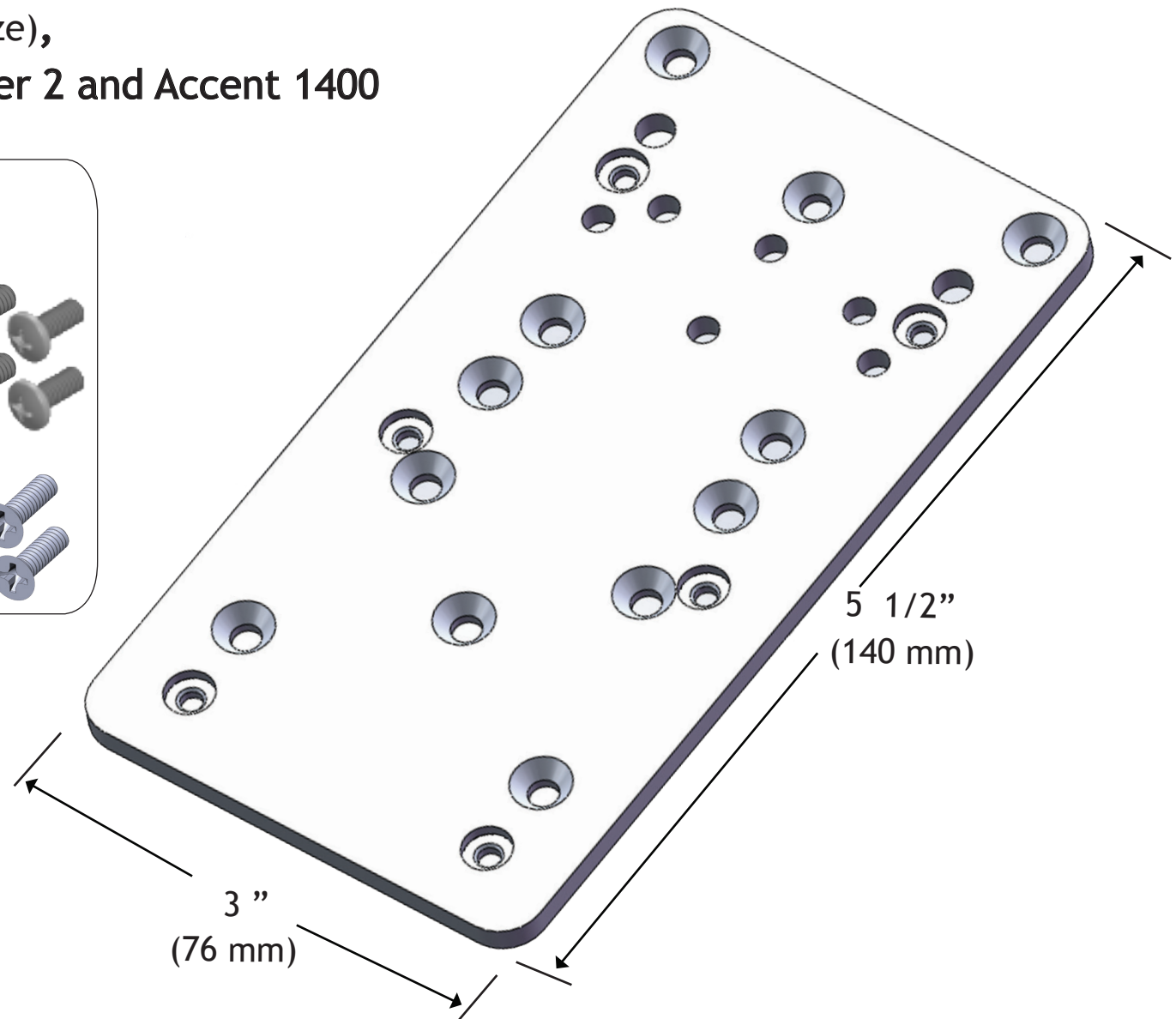
8-32 x 5/8" flathead (x4)

8-32 x 3/8" panhead (x4)

6/32 x 1/2" Flat Head (x4)

### Quick release plate (QRP) to device plate

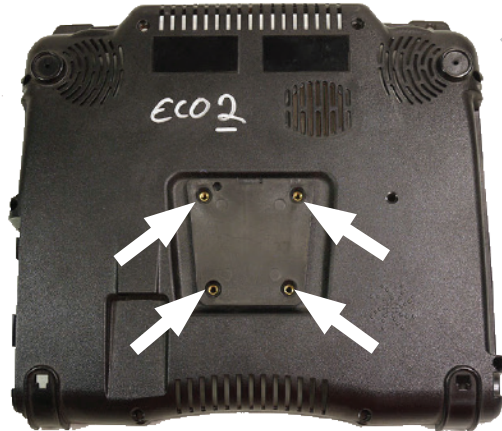
8-32 x 1/4" (x4)



## ECO 2 and ECOpoint (with eyegaze)

## DP-PRC1

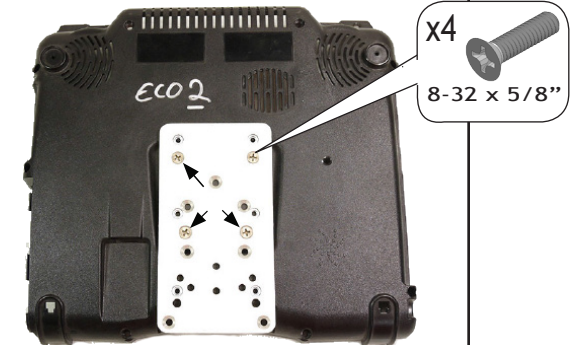
\*For all models, the original mounting plate screws should be removed first.



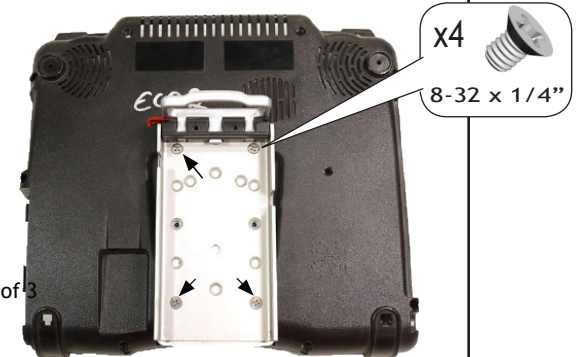
Leave mounting plate in place



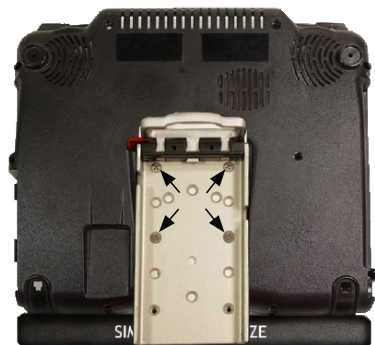
Attach device plate



Attach QRP to ECO2



Mount QRP lower when attaching to the **ECOpoint** (eye gaze)



ECOpoint

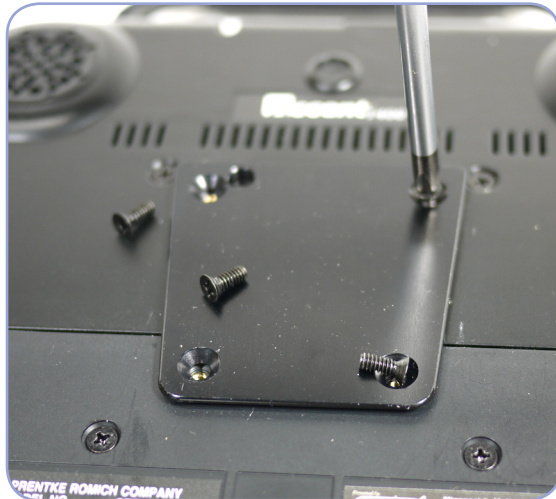
(Attach before QRP)

Stand 90 or Universal Rotator



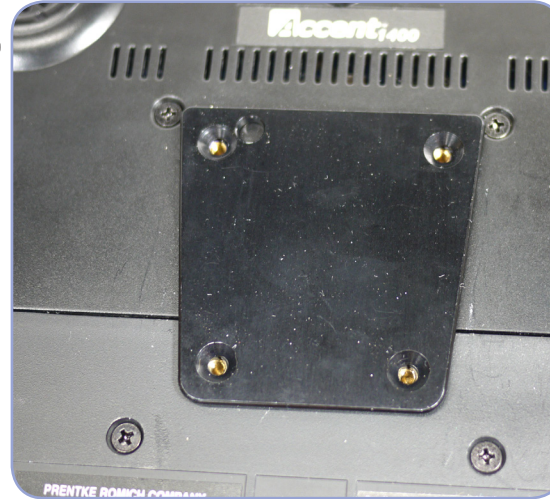
## PRC Accent 1400

①



Remove screws from mounting bracket.

②



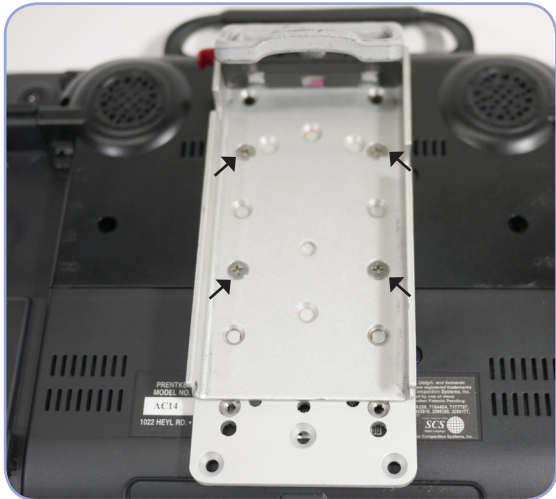
Leave mounting bracket in place.

③



Place DP-PRC1 over the Accent 1400 mounting bracket. Line up the four holes between the two plates and the Accent 1400. Attach using the four screws provided (6/32 x 1/2").

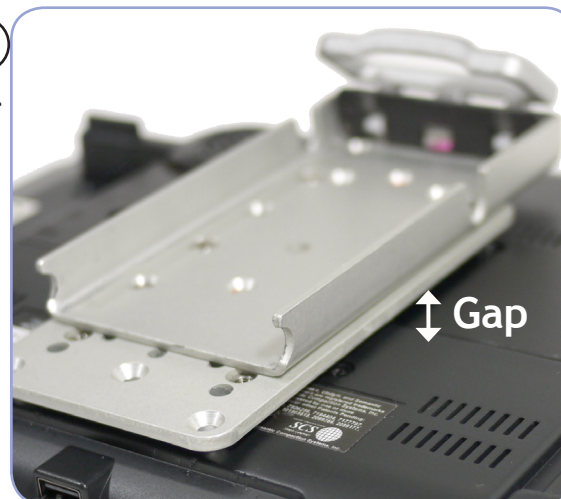
④



Attach the Quick Release Plate to the DP-PRC1 using the four screws provided (8/32 x 1/4")

④

cont.



There should be a gap between the DP-PRC1 plate and the Accent 1400 to allow for ventilation.

⑤

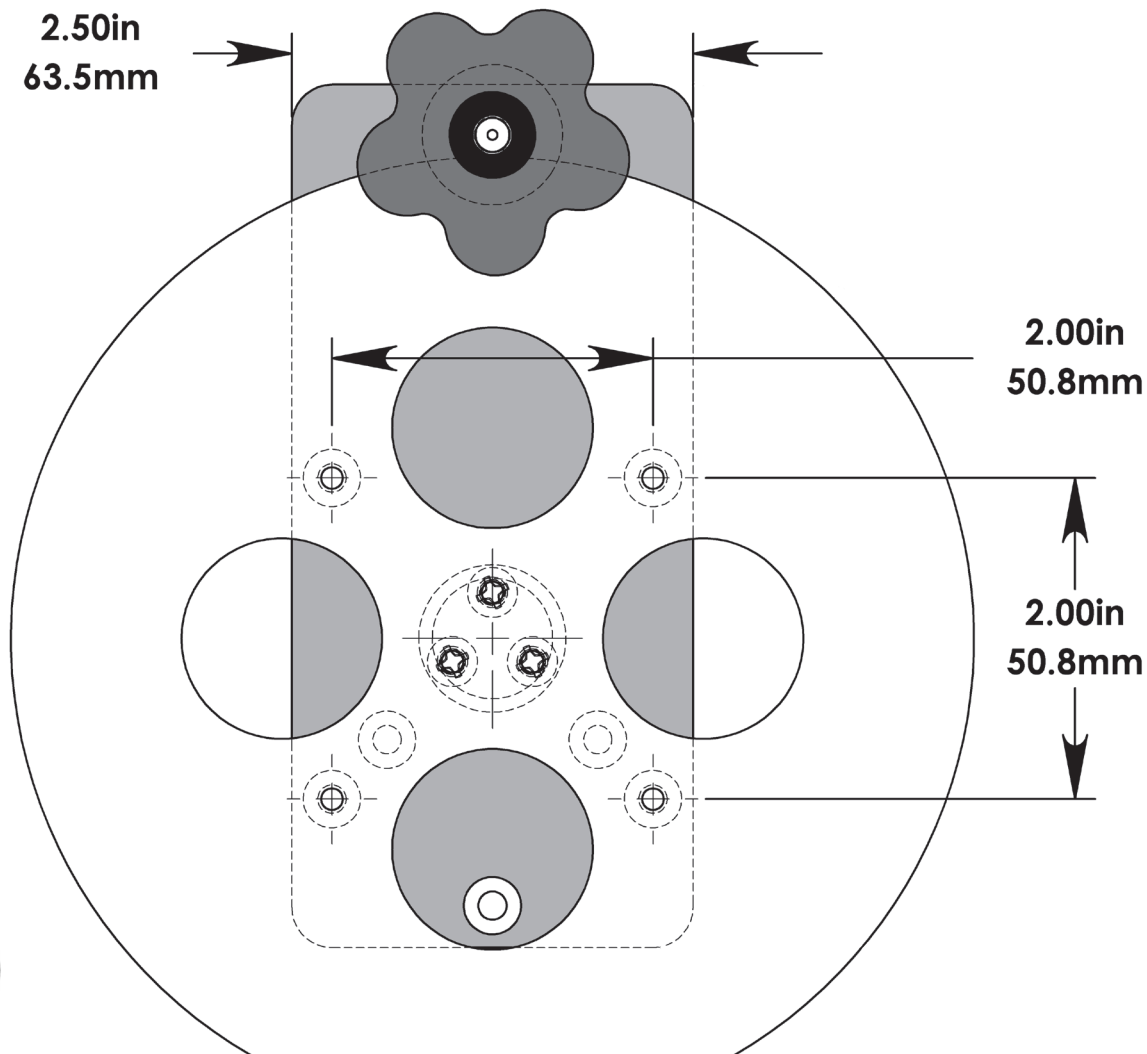
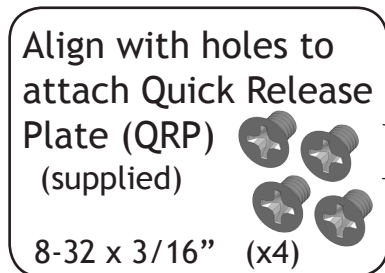
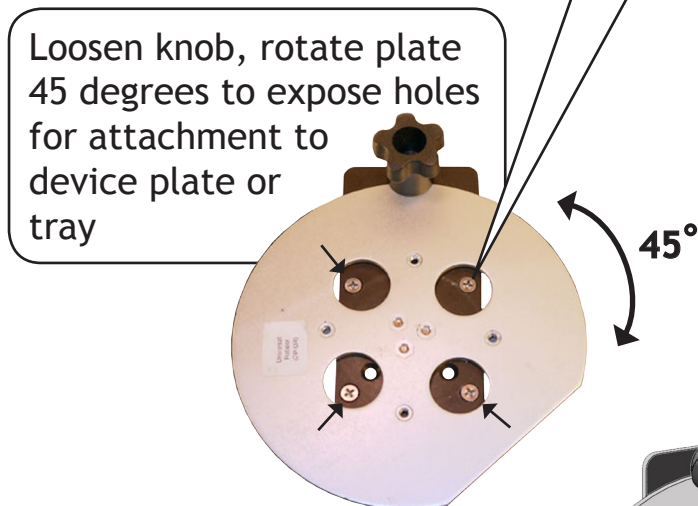
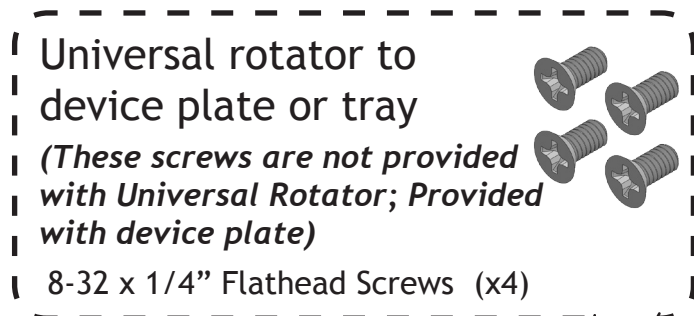


Attach the Quick Release Plate (QRP) to the Mount'n Mover!



# DP-UR Universal Rotator

Attaches to: All Mount'n Mover device plates and trays



**Mount'n Mover™**  
by BlueSky Designs  
[mountnmover.com](http://mountnmover.com)

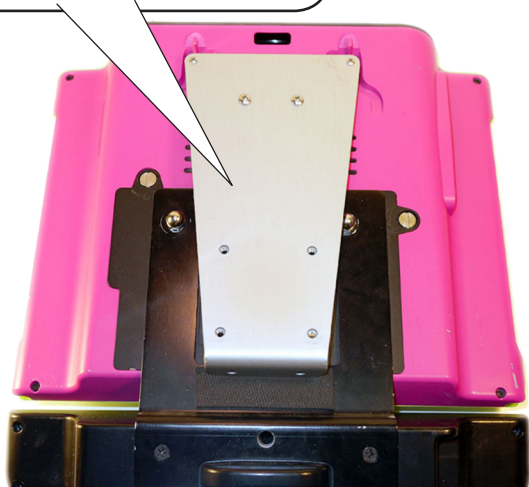
Product: DP-UR, Universal Rotator  
Weight: 7.6 oz. (0.22 kg)

1-888-724-7002 (toll free) or 1-612-724-7002

pg 1 of 2

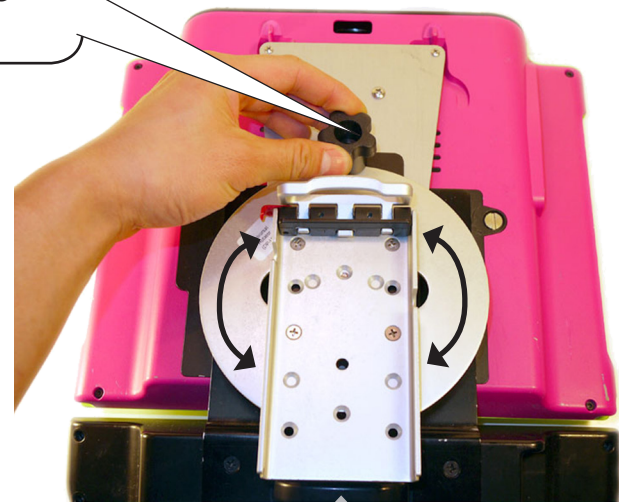
# DP-UR Universal Rotator

Attach device plate to device  
(shown with Dynavox Eyemax)



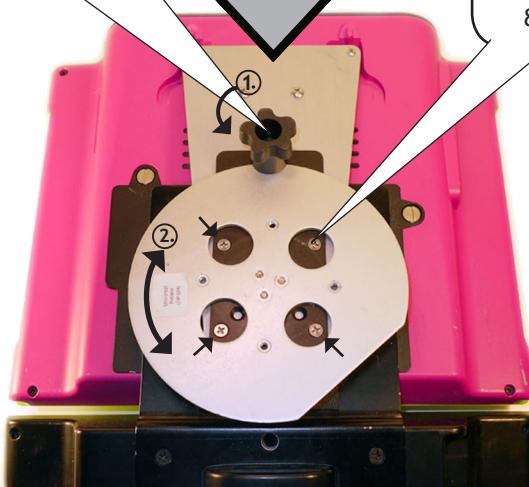
To adjust rotation:

1. Loosen knob
2. Rotate device
3. Tighten knob



1. Loosen knob
2. Rotate plate to expose device attachment holes

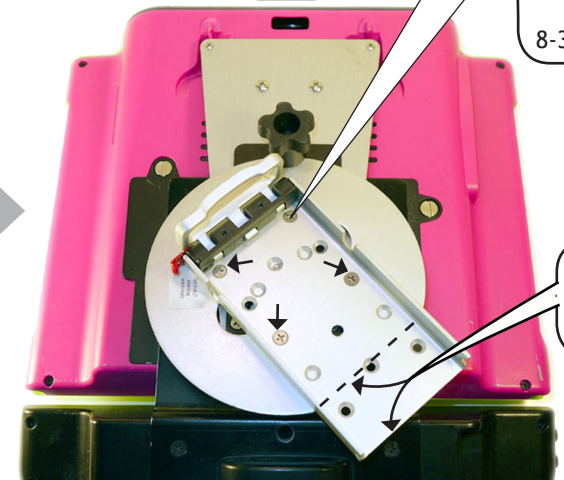
Attach UR



3. Screw UR to device plate  
(screws included with device plate)  
8-32 x 1/4" (x4)



Attach QRP



Screw QRP to UR.  
(screws included with QRP)

8-32 x 3/16"



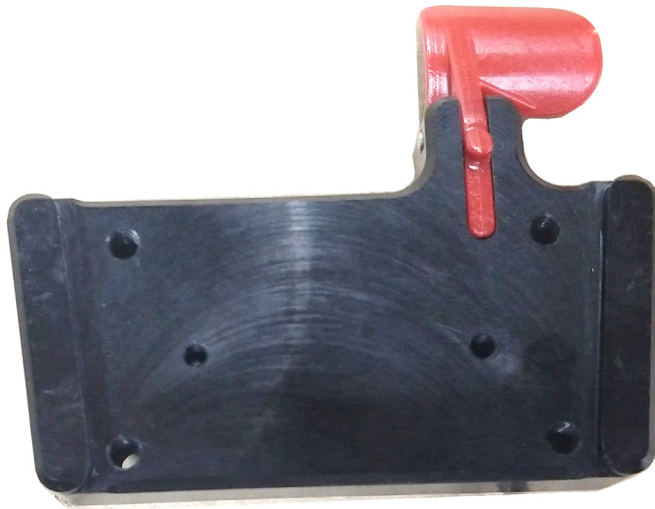
Adjust

Orient "flat" on UR to bottom of QRP

## DP-QCP Quick Connect Plate



## DP-QCR Quick Connect Receiver



Angled slots in the DP-QCR line up with angles on the edges of the DP-QCP. The DP-QCR slides onto the DP-QCP starting from the bottom. Slide the DP-QCR up until it “clicks” into the lock position.



Attach the Quick Release Plate (QRP) to the Quick Connect Receiver (QCR)  
See page 27.

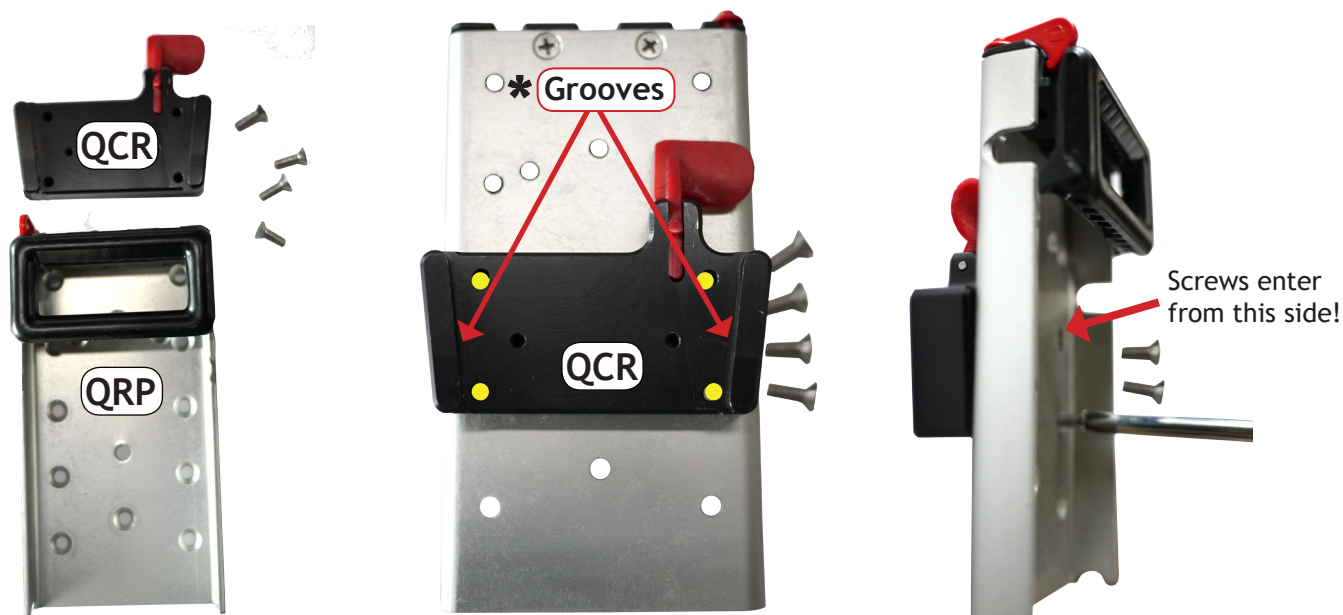


# Easy Mover Instructions

## To Tighten or Loosen Joints



## Attach the Quick Connect Receiver (QCR) to the Quick Connect Plate (QRP)

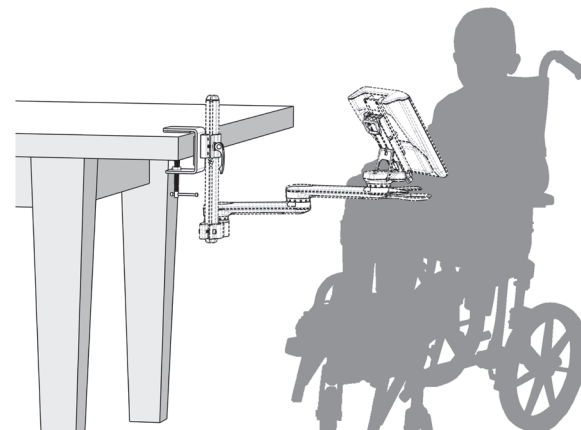
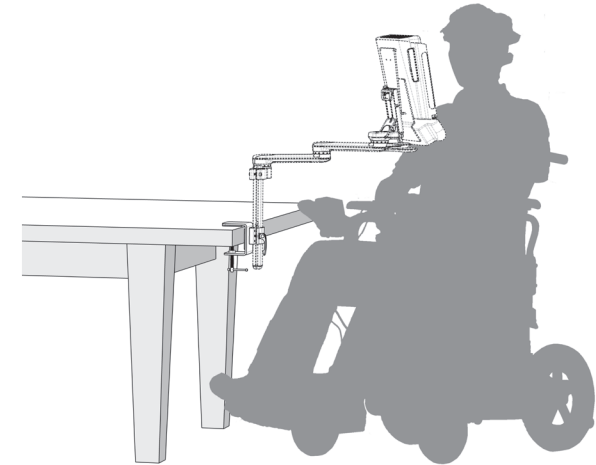
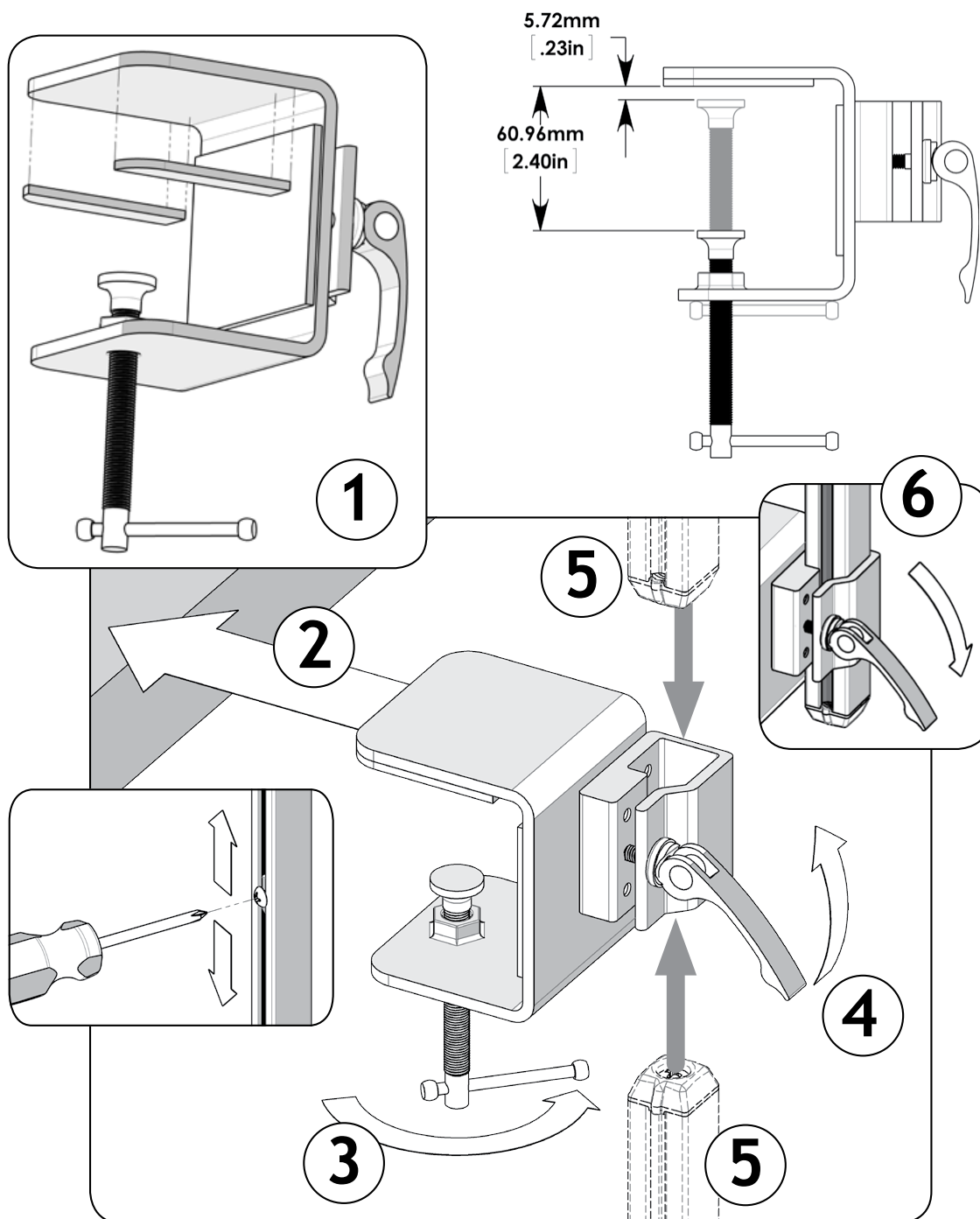


Quick Connect Receiver (QCR) and the Quick Release Plate (QRP). Attach the QCR to the QRP with four screws (8-32 x 1/2 inch) included with the Quick Connect Receiver. \* Note the grooves on the QCR



# Mount'n Mover™ TableClamp

Assembly • Use



# Simple Mount - Small and Large

## Simple Mount Small

(3.5" x 7.0" x .25")



## Simple Mount Large

(9.0" x 11.5" x .375")

**\*Holds 15 pounds!**

\*Available in Post lengths: 8", 12", 18", 24", and 36"

### Lip Supports



Simple Mount Small includes 1 Lip Support  
1/2" tall x 2" long

Simple Mount Large includes 2 Lip Supports  
1" tall x 2" long

*\*Additional Lip Supports sold separately*

**CAUTION!**

Do not loosen or remove bolt!



Max load  
15 lbs!



Caution! Do not use as a lift support



### Wheelchair Attachment

Insert the Simple Mount post into the Wheelchair Bracket (WB2)

See website for instructions on how to use the WB2



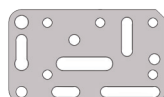
Swivels 360°

Wheelchair  
Bracket  
(WB2)

Wheelchair bracket is attached to a wheelchair using Mount'n Mover hardware (sold separately) See website



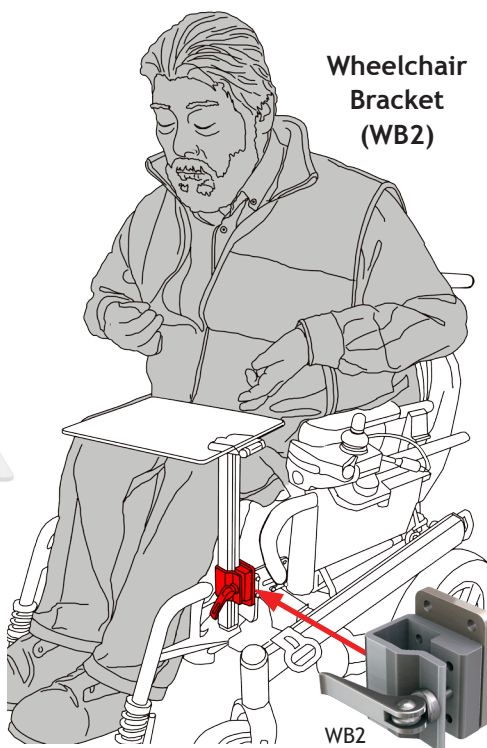
LAE



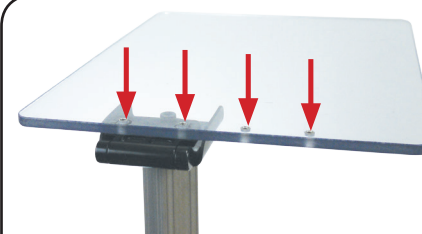
AP4



AP2



### Offset Option



Offset the Simple Mount LG 1-3/8" to the right or the left



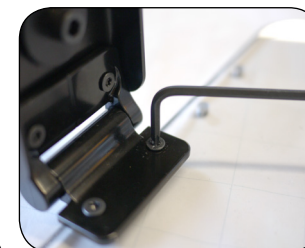
Offset left



Center



Offset right



Use a #T15 Torx wrench (included) to remove the screws holding the tray to the hinge. Move the tray to the desired offset location and tighten the screws.