

**Attaches to:**

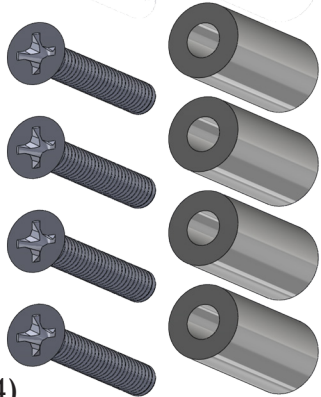
ECO2, ECOpoint, ECO-14, Vantage Lite, Accent, Springboard Lite, & Saltillo

Quick Release Plate (QRP)  
direct to DP-PRC4

8-32 x 1/4" L (x3)

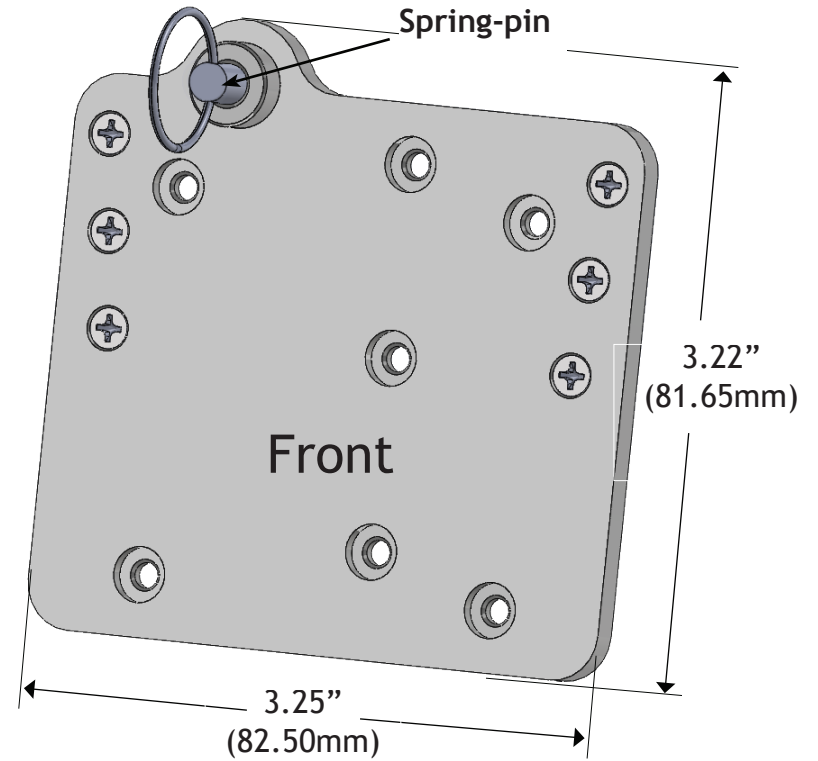
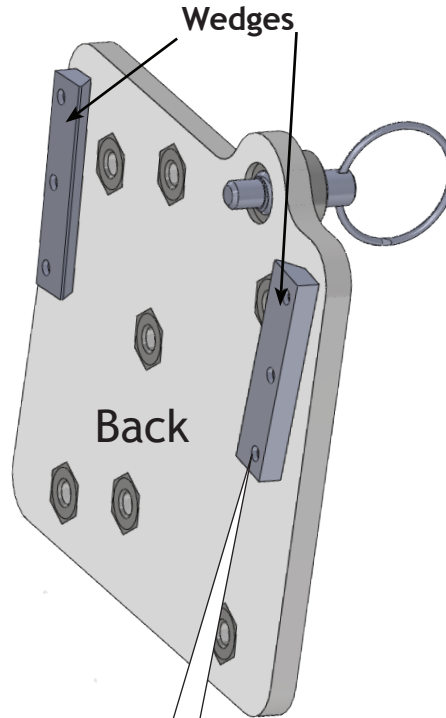


(Optional)  
Offset  
DP-PRC4



8-32 x 1" L (x4)

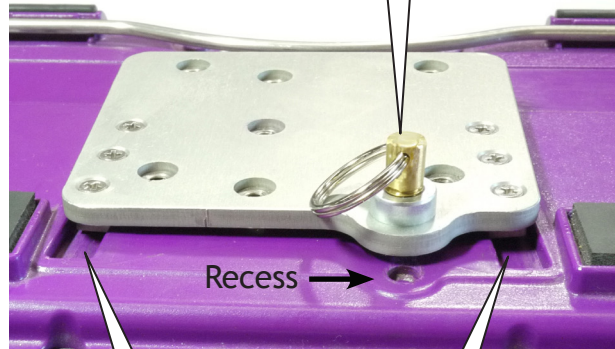
3/8" OD x 3/4" L Nylon Spacer (x4)



The DP-PRC4 is designed to be adjusted to specifically fit the device you are attaching to. The 6 screws are intentionally loose in order to be tightened once on the device.

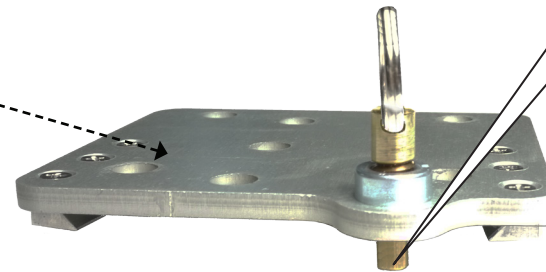
# STEP 1 Attach the DP-PRC4 onto your device

Insert wedges into the grooves on the device. Slide plate up until the spring-pin drops down and “engages” into the recess in the device.



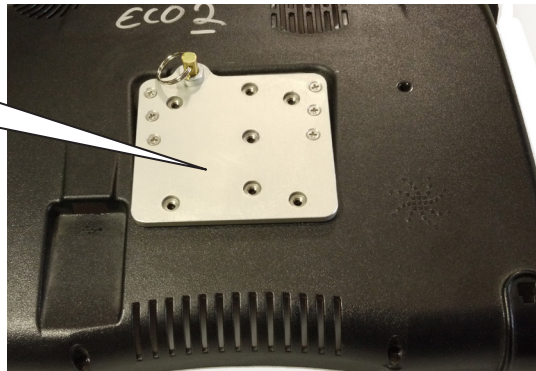
Ensure both sides of the “wedge” are placed within the “grooves” and engaged. The 6 screws should still be loose at this point.

Spring-pin is engaged. The plate is locked and secured to the device.

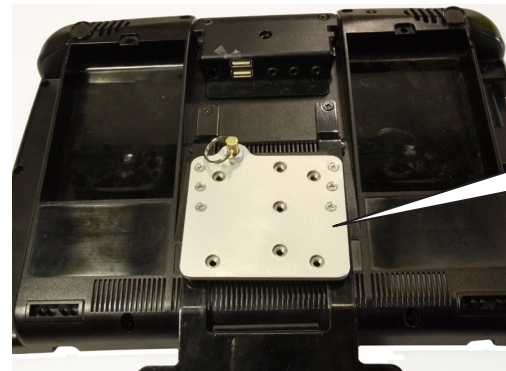


## Example: Attaching the PRC-4 to other types of devices

PRC-4 attached to ECO2

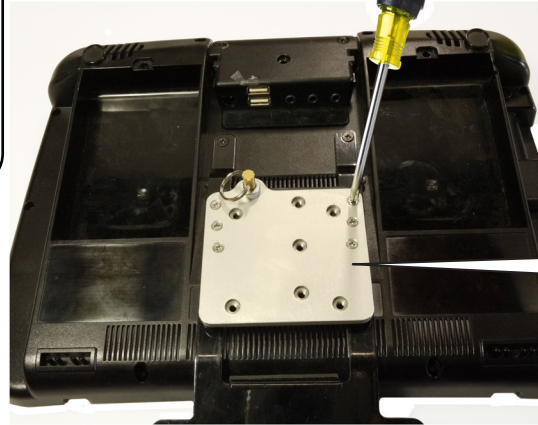
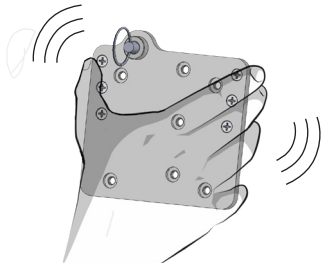


PRC-4 attached to Accent 1200



## STEP 2 Adjusting the fit

1 Grasp the plate and jiggle back and forth. If there is too much "slop" the PRC-4 can be adjusted specifically to match the device.



2 With the DP-PRC4 attached, tighten (turn clockwise) each of the 6 screws by a quarter turn using a Phillips head screwdriver. **\*Important: Do not overtighten!**

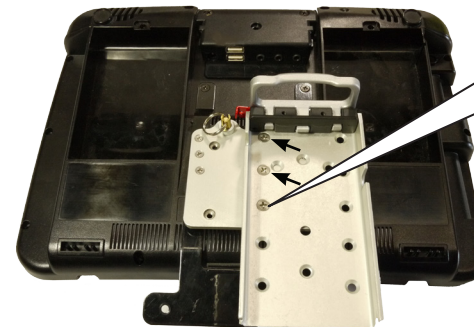
3 Now slide the DP-PRC4 plate on and off the device to test the fit. The plate should easily slide into and out of the "tracks". Gradually tighten the fit until it closely matches your specific device.

## STEP 3 Attaching the Quick Release Plate

### A: Direct QRP Attachment

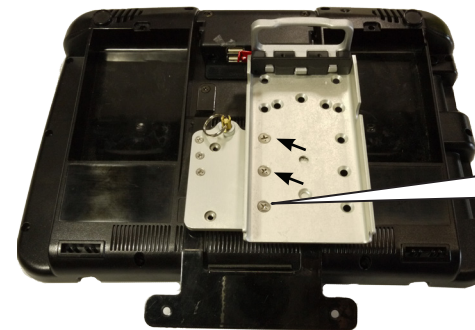
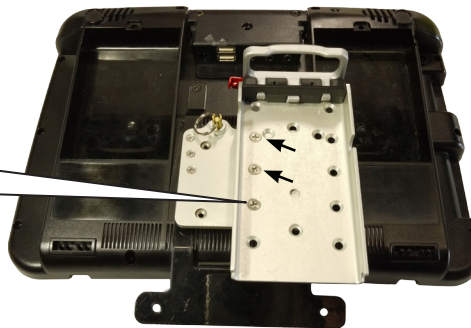
\* Three variations on height of QRP attachment

Use the hardware in the bag labeled "QRP direct to DP-PRC4"



1 Attach the Quick Release Plate directly to the DP-PRC4 (highest setting pictured)  
8-32 x 1/4" (x3)

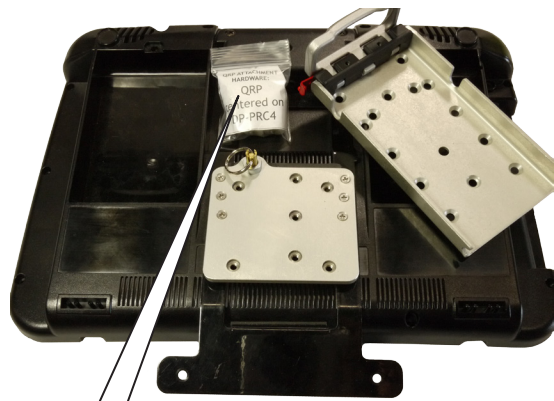
2 (middle setting pictured)  
8-32 x 1/4" (x3)



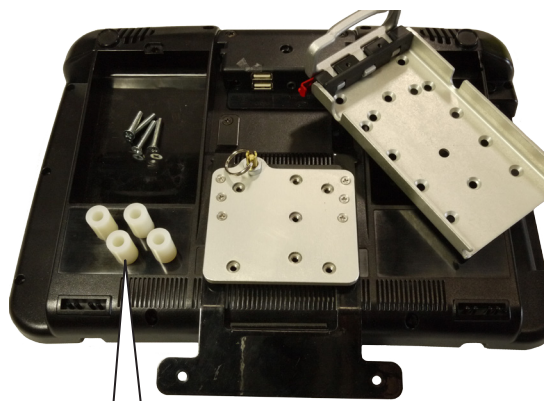
3 (Lowest setting pictured)  
8-32 x 1/4" (x3)



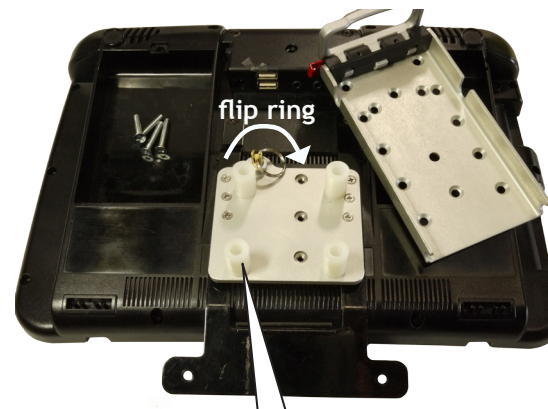
## B: Optional Offset QRP Attachment (option available if you prefer to center the QRP on the device.)



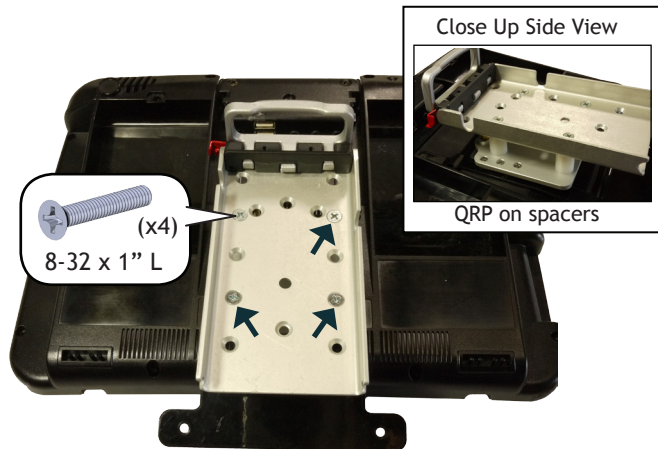
Use the hardware in the bag labeled "QRP centered on DP-PRC4"



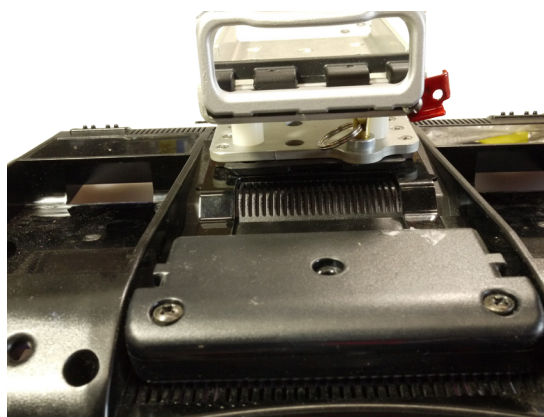
Spacers allow room to reach the "spring-pin"



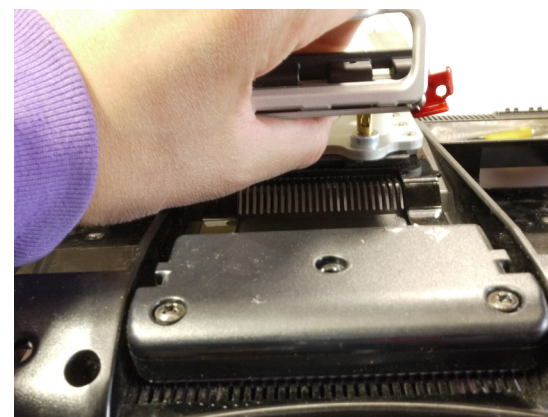
Place the spacers over the 4 threaded holes as shown. Flip the spring-pin so that it faces "inside"



Attach the QRP through the spacers and into the DP-PRC4 using the 4 screws provided. The QRP can be attached 1" up or down from the placement shown in the picture (see "STEP 3, Attaching the Quick Release Plate").



Top view of the quick release plate (QRP) attached to the DP-PRC4 (ring is flipped to the inside)



**To Remove:**  
Pull the ring against the quick release plate to release the pin. Lift the device up and off the DP-PRC4 plate.

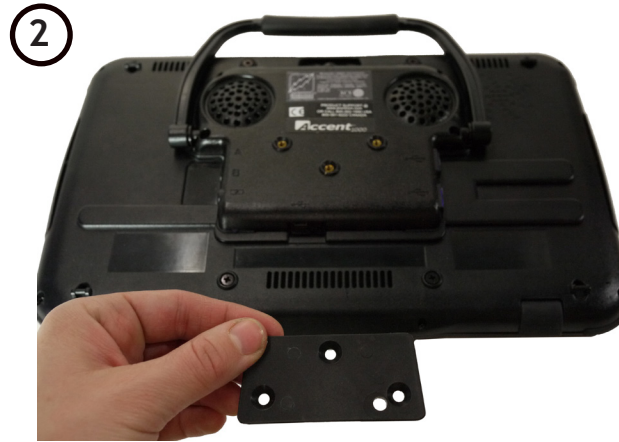
# Accent 800 and 1000 Attachment Option 1:

Direct attachment of  
Accent 800/1000 to QRP

The device is permanently mounted to the Quick Release Plate (QRP).  
The QRP can be mounted directly to the Accent 800 or 1000.



Accent with QRM mounting bracket



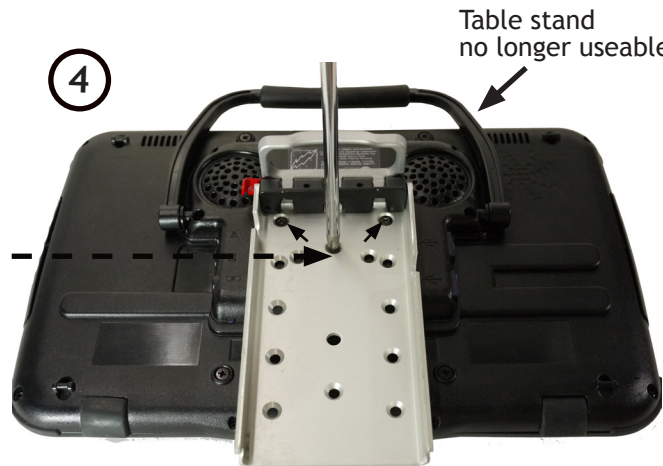
Remove QRM mounting bracket



Accent 1000 without QRM mounting  
bracket

Quick Release Plate (QRP)  
direct to Accent 1000  
and 800

6-32 x 3/8" L flat head (x3)



Attach Quick Release Plate (BlueSky)  
\* Use three holes at top of the QRP

[mountnmover.com](http://mountnmover.com)



Quick Release Plate mounted and  
ready to be attached to Mount'nMover



# Accent 800 and 1000 Attachment Option 2:

## \* Benefits:

- You can remove the QRP/PRC4 plate from the back of Accent.
- You can use the table stand.

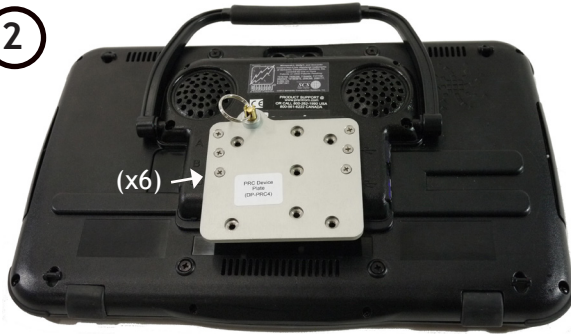
- \* Requires: - QRM Mounting Bracket (from PRC)  
- PRC4 Plate (from BlueSky Designs)

1



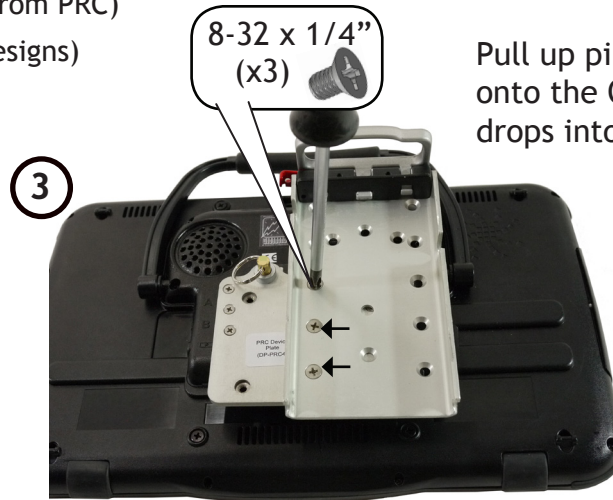
Pull up pin with ring and slide the PRC4 plate onto the QRM mounting bracket until pin drops into the hole.

2



Once in place, tighten each of the six screws 1/4 turn to the right on the PRC4 plate (do not over tighten!) Plate should be able to easily slide on and off.

3



Attach Quick Release Plate with three screws labeled "Quick Release Plate (QRP) direct to DP-PRC4"

4



Close up of PRC4 plate attached to the QRM mounting bracket.

5



Using the table stand with the mounting plates still attached.

6



Using the table stand without the plates