

**Attaches to:** Accent 1200, Vantage Lite, Springboard Lite, & ChatWrap

Quick Release Plate (QRP)  
direct to DP-PRC4

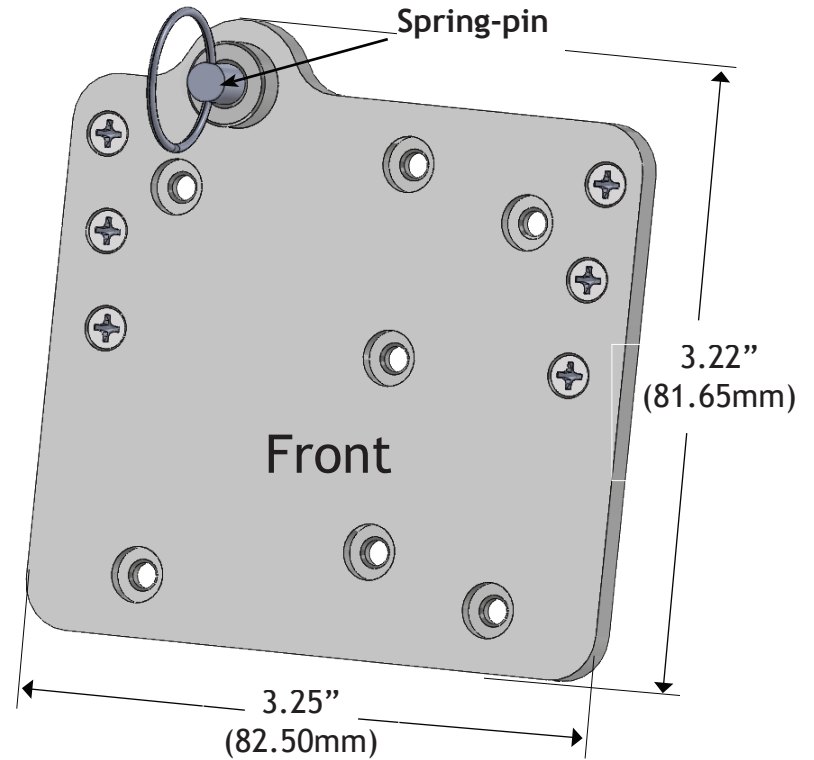
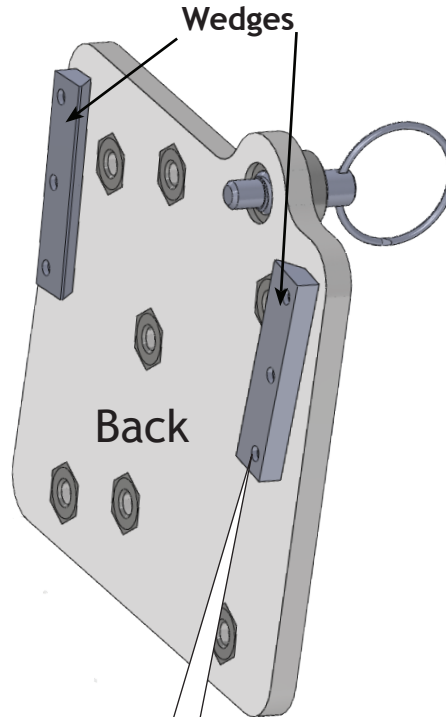
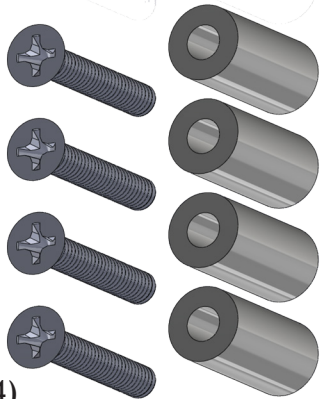
8-32 x 1/4" L (x3)



(Optional)  
Offset  
DP-PRC4

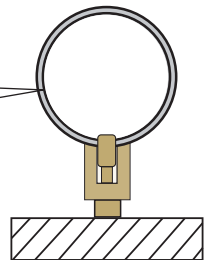
8-32 x 1" L (x4)

3/8" OD x 3/4" L Nylon Spacer (x4)



Note: Spring-pin can be locked out  
so it will not engage if it is rotated  
so it is not in the groove.

This enables a person to  
unlock and release it with  
one hand.



The DP-PRC4 is designed to be adjusted to specifically fit the device you are attaching to. The 6 screws are intentionally loose in order to be tightened once on the device.

**Mount'n Mover™**  
by BlueSky Designs

[mountnmover.com](http://mountnmover.com)

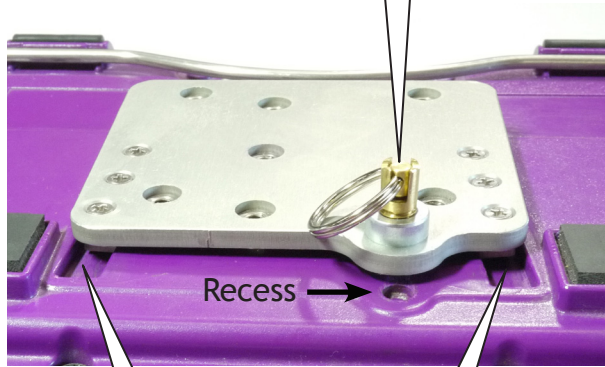
Product: DP-PRC4, Prentke Romich Co.  
Weight: 2.9 oz. (0.082 kg)

1-888-724-7002 (toll free) or 1-612-724-7002

pg 1 of 4

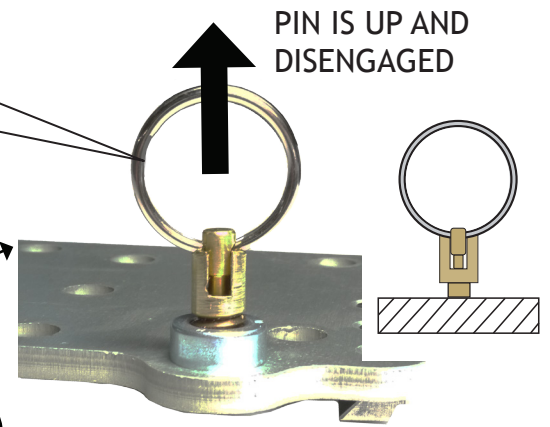
# STEP 1 Attach the DP-PRC4 onto your device

Insert wedges into the grooves on the device. Slide plate up until the spring-pin drops down and “engages” into the recess in the device.

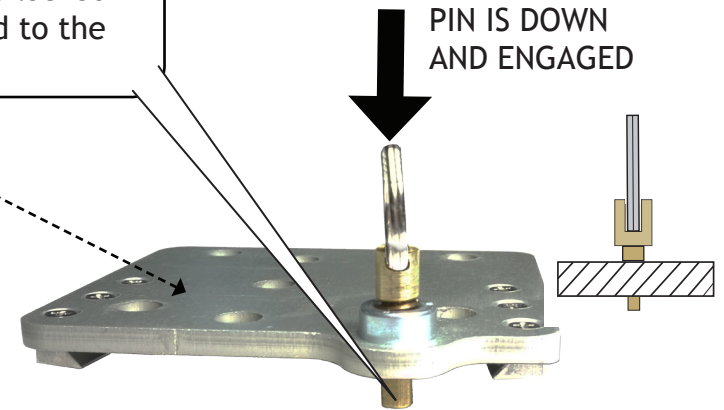


Ensure both sides of the “wedge” are placed within the “grooves” and engaged. The 6 screws should still be loose at this point.

Spring-pin is not yet engaged. The plate is not locked.

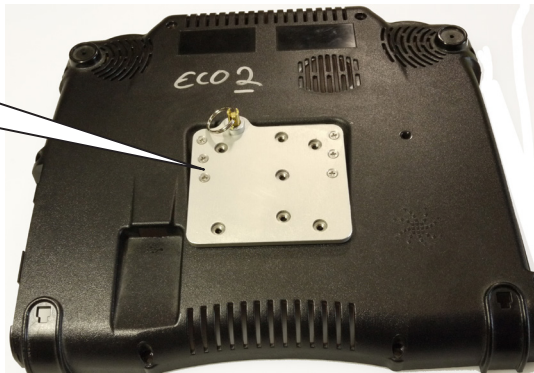


Spring-pin is engaged. The plate is locked and secured to the device.

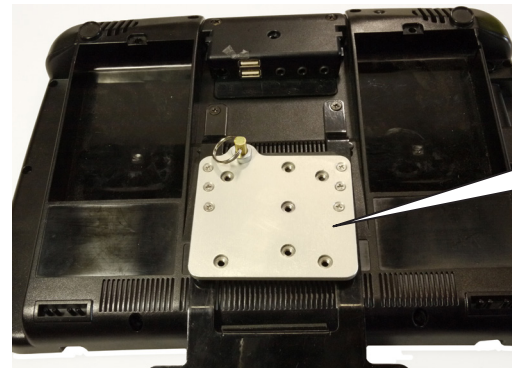


## Example: Attaching the PRC-4 to other types of devices

PRC-4 attached to ECO2

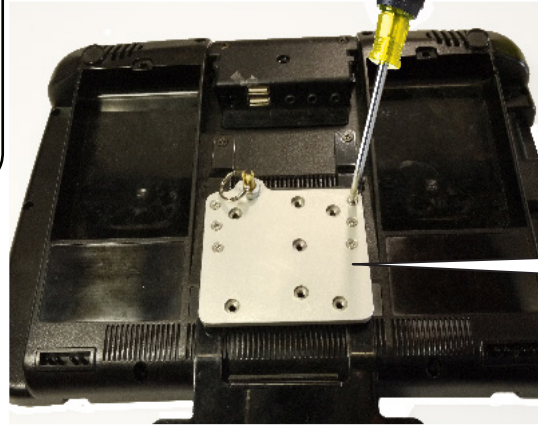
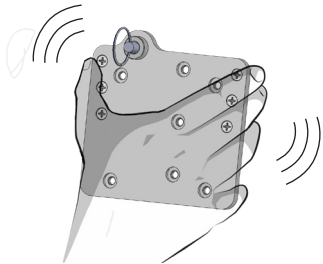


PRC-4 attached to Accent 1200



## STEP 2 Adjusting the fit

1 Grasp the plate and jiggle back and forth. If there is too much "slop" the PRC-4 can be adjusted specifically to match the device.



2 With the DP-PRC4 attached, tighten (turn clockwise) each of the 6 screws by a quarter turn using a Phillips head screwdriver. **\*Important: Do not overtighten!**

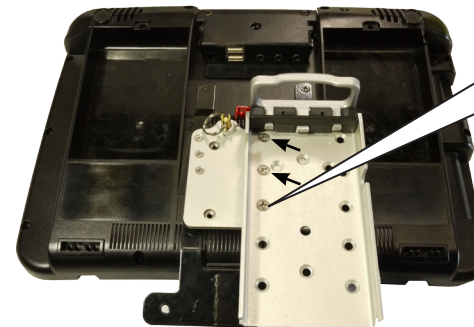
3 Now slide the DP-PRC4 plate on and off the device to test the fit. The plate should easily slide into and out of the "tracks". Gradually tighten the fit until it closely matches your specific device.

## STEP 3 Attaching the Quick Release Plate

### A: Direct QRP Attachment

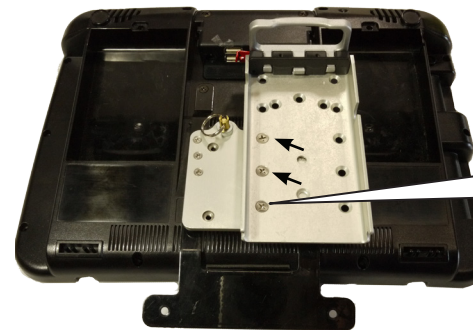
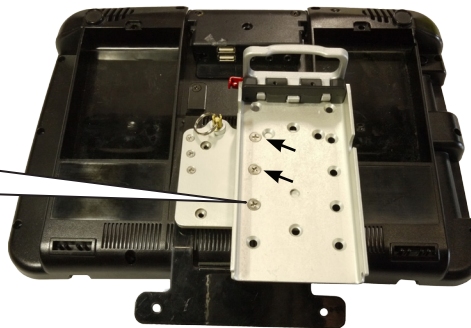
\* Three variations on height of QRP attachment

Use the hardware in the bag labeled "QRP direct to DP-PRC4"



1 Attach the Quick Release Plate directly to the DP-PRC4 (highest setting pictured)  
8-32 x 1/4" (x3)

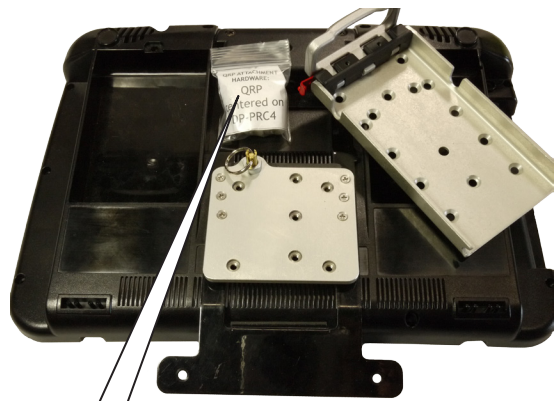
2 (middle setting pictured)  
8-32 x 1/4" (x3)



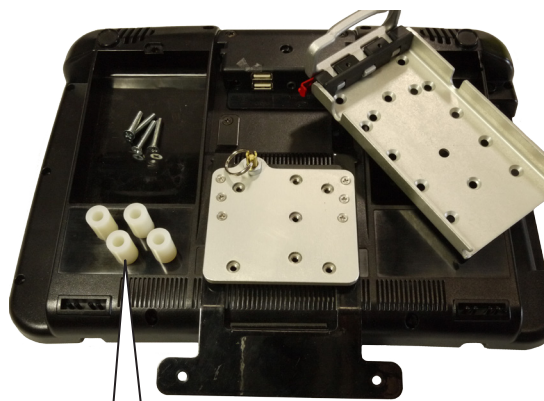
3 (Lowest setting pictured)  
8-32 x 1/4" (x3)



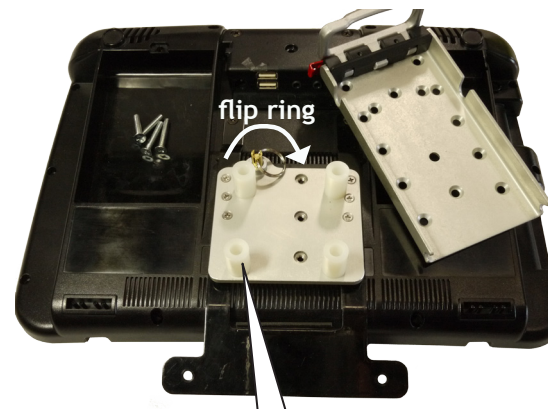
**B: Optional Offset QRP Attachment**  
 (option available if you prefer to center the QRP on the device.)



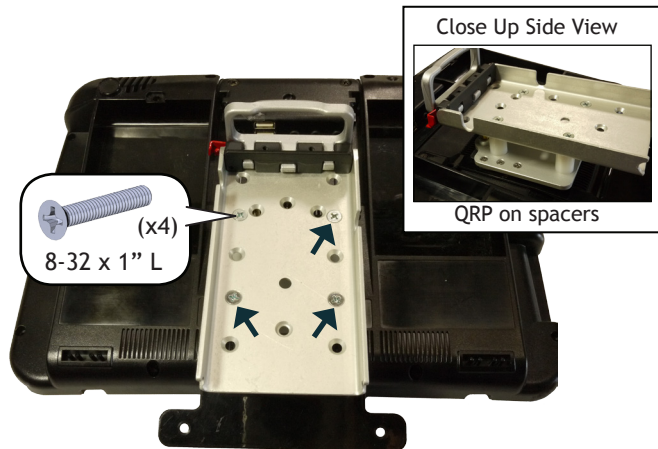
Use the hardware in the bag labeled "QRP centered on DP-PRC4"



Spacers allow room to reach the "spring-pin"

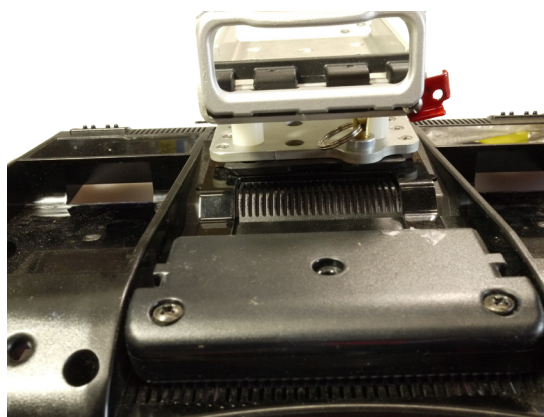


Place the spacers over the 4 threaded holes as shown. Flip the spring-pin so that it faces "inside"

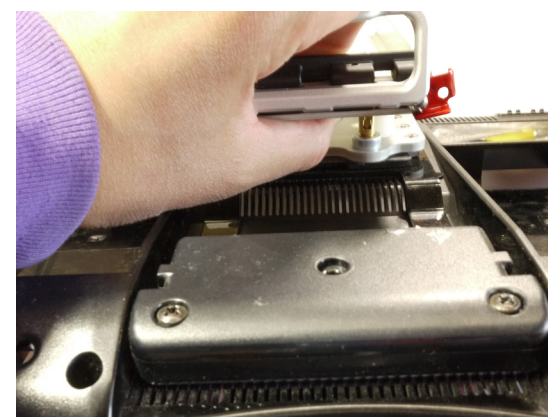


(x4)  
8-32 x 1" L

Attach the QRP through the spacers and into the DP-PRC4 using the 4 screws provided. The QRP can be attached 1" up or down from the placement shown in the picture (see "STEP 3, Attaching the Quick Release Plate").



Top view of the quick release plate (QRP) attached to the DP-PRC4 (ring is flipped to the inside)



**To Remove:**  
 Pull the ring against the quick release plate to release the pin. Lift the device up and off the DP-PRC4 plate.