

Mount'n Mover

by BlueSky Designs

Eval Sheet

www.mountnmover.com
 Phone: 612.724.7002 // 888.724.7002
 Fax: 888.311.4435 // Intl: 612.724.7002

Follow these steps to fully specify a Mount'n Mover system.

Client Name: _____
 Chair Type: _____
 Second Chair: _____
 Device(s) to Attach: _____
 Contact Name: _____
 Email: _____

Step 1 : Choose a Mount'n Mover

Note: Dual, Single Arm and Tilt'n Turner all come with a **FREE** Quick Release Plate (QRP)

Dual Arm Mount'n Mover



M2-TQ-H *
 (High Resistance Hinge)
M2-TQ-L *
 (Low Resistance Hinge)

Single Arm Mount'n Mover

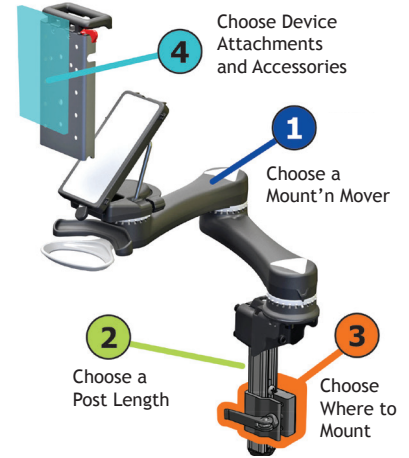


M1-TQ-H *
 (High Resistance Hinge)
M1-TQ-L *
 (Low Resistance Hinge)

Tilt'n Turner



M0-TQ-H *
 (High Resistance Hinge)
M0-TQ-L *
 (Low Resistance Hinge)



Simple Mount Large

Two Lip Supports Included




Post Included
 Choose Post length below

SM-LG-H *
SM-LG-L *

Simple Mount Small

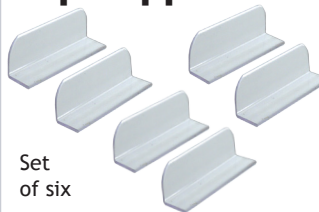
One Lip Support Included



Post Included
 Choose Post length below

SM-S-H *
SM-S-L *

Additional Lip Supports



Set of six


TRA-LS-1/2
 (1/2" tall x 2" long)
TRA-LS-1
 (1" tall x 2" long)

***Hinge Resistance:**
 We recommend the High Resistance Hinge for heavier devices (5 lbs. [2.3 kg] or greater).
 The High Resistance Hinge deters device movement when the tilt lever is unlocked. Both **H** and **L** hinges can be securely locked using the tilt lever lock.

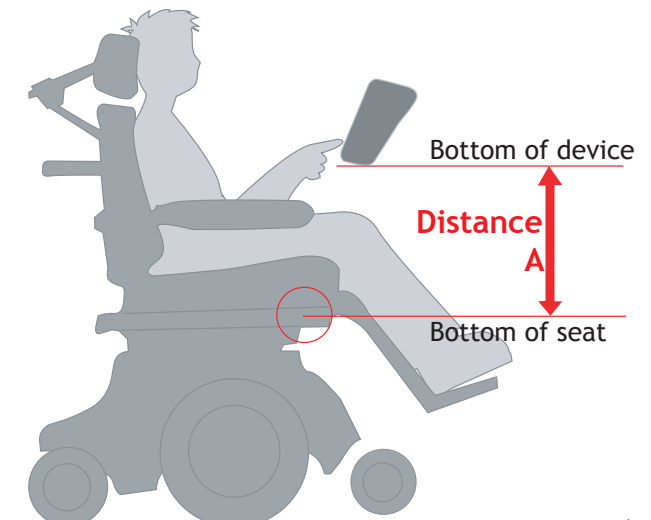
Step 2 : Choose a Post Length

Minimum post length is determined by the distance from the mounting point to the bottom of a person's tray or device when it is in his/her preferred operating position.
 Measure **Distance A** in the diagram and select the next longest post.

Post



8" Post **P8**
 12" Post **P12**
 18" Post **P18**
 24" Post **P24**
 Custom Post Length
 inches*
 * Custom post lengths available.

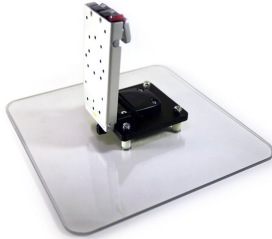


Step 3 : Choose Where to Mount

Mount to any combination of Wheelchair, Table or Floor Stand

3 : Table Solutions

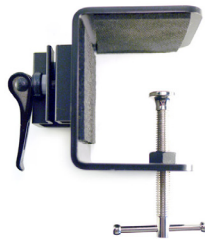
Mount'n Tilter



- Ideal for surface mounting
- Does not include QRP

MNT

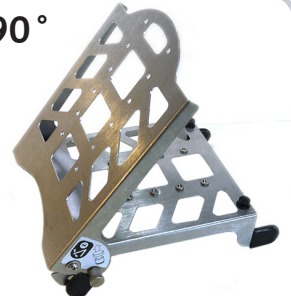
Table Clamp



- Attach your mount to a table!
- Designed for use with Post & Mount

TC

Stand +90°



- Table stand for devices
- Downward tilt for mounted devices

DP-STAND90

3 : Floor Stands

Basic Floor Stand



Use your Mount'n Mover on a Floor Stand, move from wheelchair or table to Floor Stand in seconds. Easy access from bed!

Floor Stand Options

FS (Basic Floor Stand)

Options:

- 4C (4 "total lock" casters)

- E (Horizontal Extension)
Adds up to a 16" horizontal extension

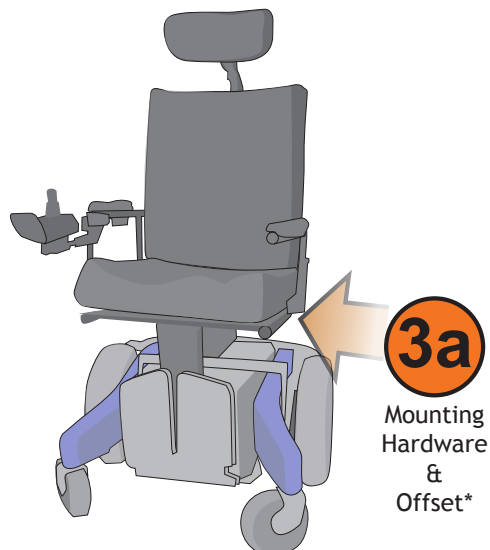
Basic FS has 2 in-line wheels and 2 "Total-Lock" casters



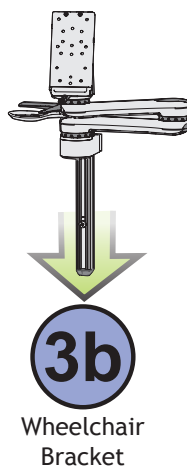
Horizontal Extension Option:



3 : Wheelchair Mounting



+



Overview

Wheelchair Mounting is divided into two stages:

3a Select Mounting Hardware

- Direct Wheelchair Attachment
- Offset Components (Offset components are optional)

3b Select Wheelchair Bracket(s)

The Bracket is attached to the Mounting Hardware selected from 3a. The Mount'n Mover Post is then inserted into the Wheelchair Bracket square clamp.

Wheelchair Mounting - 3a Select Mounting Hardware

Adapter Plate



- Most compact plate
- For Hole Spacing 1"-2"

WC-AP

Multi-Purpose Plates

All Adapter Plate(s):

- Can be used with bridge clamps.
- Accommodate a range of spacing for 1/4" or 6mm bolts.

Adapter Plates 2 and 4 can be used for:

- Permobil UniTrack
- Permobil Corpus
- Quantum/Jazzy Tie-Downs

Adapter Plate 2



- Longer plate for offset

WC-AP2

Adapter Plate 4



- More attachment options
- Also for 5/16" or 8mm bolts

WC-AP4

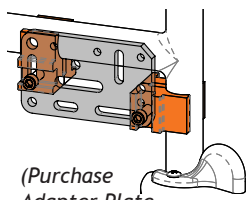
T-Nut



- Compatible with Invacare and Quantum slide track.

WC-TN

Bridge Clamp



(Purchase Adapter Plate separately)

Bridge clamps must be used in pairs, spanned with an adapter plate.



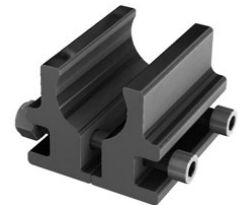
- 1" Bridge Set WC-R1B-SET
- 7/8" Bridge Set WC-R7/8B-SET
- Mixed Set (1 ea.) WC-R-Mixed-SET



- 1" Bridge (1)
- 7/8" Bridge (1)

Round Clamp

For mounting vertically to round tubing



1" Clamp WC-R1

7/8" Clamp WC-R7/8

Offset Options

Why Offset?

- Get around obstacles like trays, brakes, footrests and armrests.
- Position the Wheelchair Brackets and post for best position.
- Compensate for mounting angle so post is vertical.

Adapter Plate(s) can also be used to offset mounting forward or upward.

L-Angle Extension



Can be used in pairs to extend mounting up to 7"

WC-LAE

Adapter Plate(s)



AP2 is a longer offset.
AP4 has more options.

WC-AP2

WC-AP4

Angle Adjust Plate



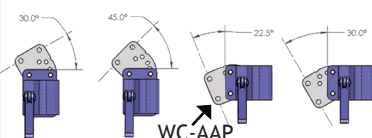
Compatible with any mounting component. Adjust post to vertical (every 7.5°).

WC-AAP

Wheelchair Mounting - 3b Select Wheelchair Bracket(s)

Solid Wheelchair Bracket

Configurable in 2 orientations. Compact profile. Minimal play/slop. More secure.



WB2

Use with WC-AAP for mounting at an angle (7.5 degree increments)

Rehadapt with Tilt Plate



Customer supplies the TS-XL head

DPA-Rehadapt TS-XL

Wheelchair DAESSY adapter



Compatible with DAESSY wheelchair hardware.

WB-DAESSY

Step 4 : Choose Device Attachments & Accessories

Access anything, anywhere! Select access for one or multiple devices and trays

4 : BlueSky Designs Accessories

Quick Release Plate



One comes free with each Mount'n Mover.

QRP

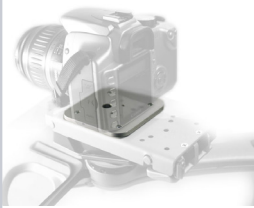
Universal Rotator



Add a degree of freedom between tilt and device. Great for eyegaze and tablets.

DP-UR

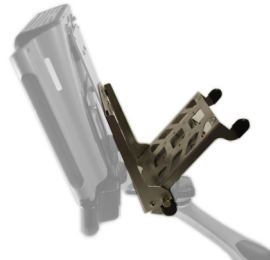
Camera Plate



Turns a Quick Release Plate into a camera stand! Compatible with other tripod heads

DP-CAM3

Stand +90°

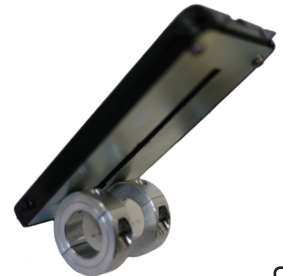


Extend your downward tilt range to 180°. Also use as a table stand for devices

DP-STAND90

Tilt Plate Adapter

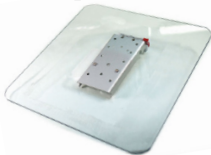
Compatible with DAESSY and Rehadapt. Other sizes available.



TR-TPA
1"
7/8"

4 : Tray Options - Reading, Laptops, iPads, etc

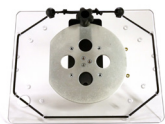
12"x 12" Tray



Multi-purpose tray. Adapt it for your needs.

TR-12x12
Add QRP?

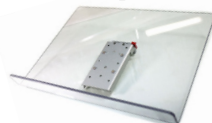
iPad-Tablet Tray



Great for iPad and Tablet. Easily switch from landscape to portrait with Universal Rotator (shown).

TR-iTab
TR-iTab-UR
(With Universal Rotator)
Add QRP?

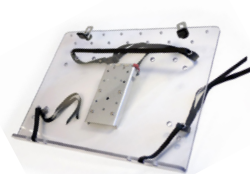
12"x 16" Tray with Lip



Multi-purpose tray with lip. Great for books, tablets, etc. Angle it flat and turn it around for writing or eating.

TR-12x16
Add QRP?

Laptop Tray



Tray, holes and straps fit most laptops securely. Easily remove your laptop.

TR-LT
Add QRP?

Tablet Tray (with hinge tray)

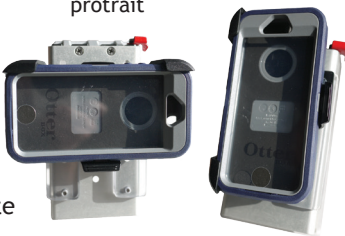


TR-iTab-Keyboard
9.5" x 12" (x2)

Phone Plate

Landscape or portrait

Attachment plate for mobile phone. Includes an Otterbox Defender swivel case. Shown with Quick Release Plate (not included).



DP-PHONE-OB



Add a Swing Away Tray on a 12 x 16" or Laptop Tray to hold a mouse, phone or other small device. See website for information.

4 : Communication Device Attachments

Attach any Device with Ease

Device plates attach communication devices to the Mount'n Mover's Quick Release Plate (QRP).

One QRP comes with each Mount'n Mover.

Find the attachment plate for your device

MAKE	MODEL	PLATE
Tobii Dynavox	Maestro, T10, T15, V, Vmax, M3, DV4, MT4	DP-DV1
	EyeMax, Maestro w/eye gaze	DP-DV2
	EyeMobile	DP-MULTI1
	T 7, C15 w/eye gaze	Contact Us
	P10, C8, C12, CEye, S32,	DP-T1
	I12, I15	DP-T2
Prentke Romich Co.	Accent 700, 800, 1000	DP-PRC5
	Accent 1400, ECO2, ECOpoint, ECO-14, Vanguard, Pathfinder 2	DP-PRC1
	Accent 1200, Vantage Lite, Springboard Lite, ChatWrap	DP-PRC4 *
Salttillo	NOVA chat (requires wheelchair mounting plate sold by Salttillo)	DP-PRC4
Others	(Jabbla)-Mobi/Tellus, (Abilia)-Rolltalk, AMDI, VESA (50,75,100mm), Smartbox	DP-MULTI1
iPad/ Tablets	Fits most iPads / Tablets	TR-iTAB

Plates for AbleNet, Lightwriter and more are available. See website for specifics

* DP-PRC4 plate requires a QRM mounting bracket from Prentke Romich Co.