

# Mount'n Mover

by BlueSky Designs

## Eval Sheet

www.mountnmover.com  
 Phone: 612.724.7002 // 888.724.7002  
 Fax: 888.311.4435 // Intl: 612.724.7002

Follow these steps to fully specify a Mount'n Mover system.

Client Name: \_\_\_\_\_  
 Chair Type: \_\_\_\_\_  
 Second Chair: \_\_\_\_\_  
 Device(s) to Attach: \_\_\_\_\_  
 Contact Name: \_\_\_\_\_  
 Email: \_\_\_\_\_

### Step 1 : Choose a Mount'n Mover

**Note:** Dual, Single Arm and Tilt'n Turner all come with a **FREE** Quick Release Plate (QRP)

**Dual Arm Mount'n Mover**



**M2-TQ-H \***   
 (High Resistance Hinge)  
**M2-TQ-L \***   
 (Low Resistance Hinge)

**Single Arm Mount'n Mover**

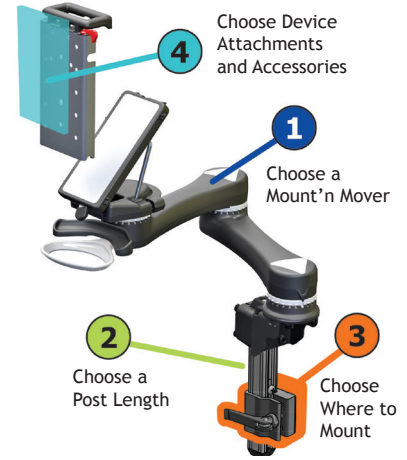


**M1-TQ-H \***   
 (High Resistance Hinge)  
**M1-TQ-L \***   
 (Low Resistance Hinge)

**Tilt'n Turner**




**M0-TQ-H \***   
 (High Resistance Hinge)  
**M0-TQ-L \***   
 (Low Resistance Hinge)



**Simple Mount Large**

Two Lip Supports Included




Post Included  
 Choose Post length below

**SM-LG-H \***   
**SM-LG-L \***

**Simple Mount Small**

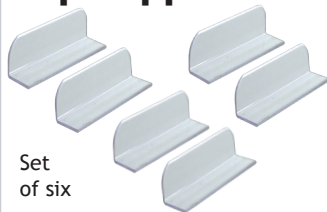
One Lip Support Included



Post Included  
 Choose Post length below

**SM-S-H \***   
**SM-S-L \***

**Additional Lip Supports**



Set of six


**TRA-LS-1/2**   
 ( 1/2" tall x 2" long )  
**TRA-LS-1**   
 ( 1" tall x 2" long )

**\*Hinge Resistance:**  
 We recommend the High Resistance Hinge for heavier devices (5 lbs. [2.3 kg] or greater).  
 The High Resistance Hinge deters device movement when the tilt lever is unlocked. Both **H** and **L** hinges can be securely locked using the tilt lever lock.

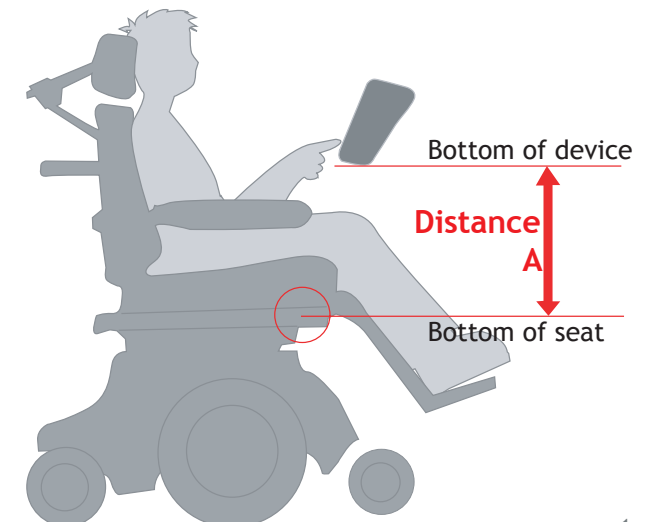
### Step 2 : Choose a Post Length

Minimum post length is determined by the distance from the mounting point to the bottom of a person's tray or device when it is in his/her preferred operating position.  
 Measure **Distance A** in the diagram and select the next longest post.

**Post**



8" Post **P8**   
 12" Post **P12**   
 18" Post **P18**   
 24" Post **P24**   
 Custom Post Length  
 inches\*  
 \* Custom post lengths available.

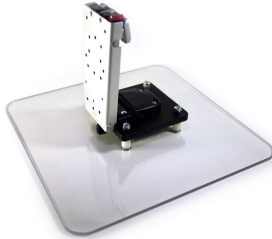


# Step 3 : Choose Where to Mount

Mount to any combination of Wheelchair, Table or Floor Stand

## 3 : Table Solutions

### Mount'n Tilter

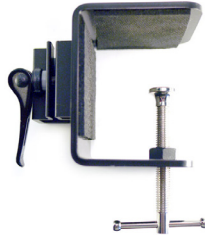


- Ideal for surface mounting
- Does not include QRP

MNT



### Table Clamp

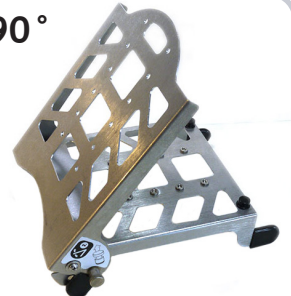


- Attach your mount to a table!
- Designed for use with Post & Mount

TC



### Stand +90°



- Table stand for devices
- Downward tilt for mounted devices

DP-STAND90



## 3 : Floor Stands

### Basic Floor Stand



Use your Mount'n Mover on a Floor Stand, move from wheelchair or table to Floor Stand in seconds. Easy access from bed!

Basic FS has 2 in-line wheels and 2 "Total-Lock" casters



### Floor Stand Options

FS  
(Basic Floor Stand)



### Options:

- 4C  
(4 "total lock" casters)

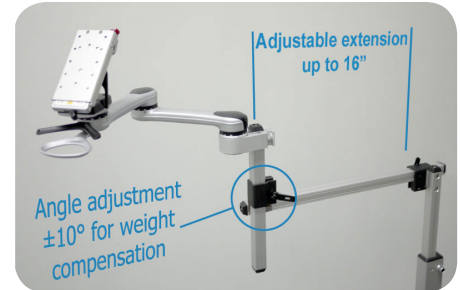


- E  
(Horizontal Extension)

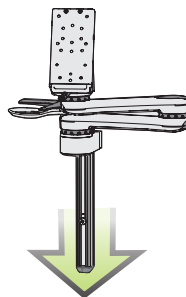
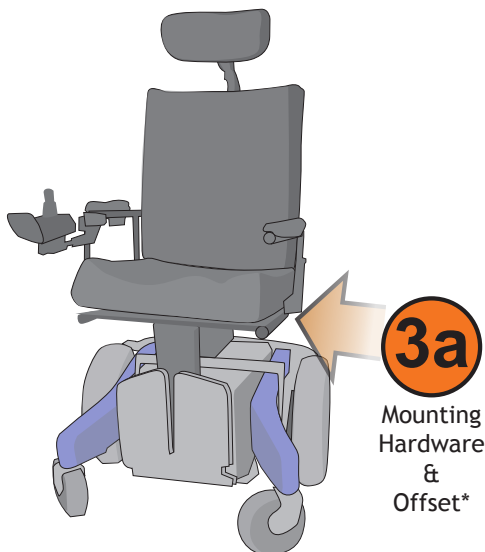


Adds up to a 16" horizontal extension

Horizontal Extension Option:



## 3 : Wheelchair Mounting



+

3b  
Wheelchair Bracket

### Overview

Wheelchair Mounting is divided into two stages:

#### 3a Select Mounting Hardware

- Direct Wheelchair Attachment
- Offset Components  
(Offset components are optional)

#### 3b Select Wheelchair Bracket(s)

The Bracket is attached to the Mounting Hardware selected from 3a. The Mount'n Mover Post is then inserted into the Wheelchair Bracket square clamp.

## Wheelchair Mounting - 3a Select Mounting Hardware

### Adapter Plate



- Most compact plate
- For Hole Spacing 1"-2"

WC-AP

### Multi-Purpose Plates

All Adapter Plate(s):

- Can be used with bridge clamps.
- Accommodate a range of spacing for 1/4" or 6mm bolts.

Adapter Plates 2 and 4 can be used for:

- Permobil UniTrack
- Permobil Corpus
- Quantum/Jazzy Tie-Downs

### Adapter Plate 2



- Longer plate for offset

WC-AP2

### Adapter Plate 4



- More attachment options
- Also for 5/16" or 8mm bolts

WC-AP4

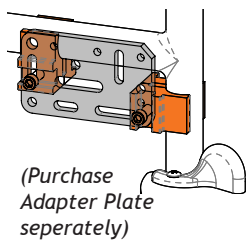
### T-Nut



- Compatible with Invacare and Quantum slide track.

WC-TN

### Bridge Clamp



(Purchase Adapter Plate separately)

Bridge clamps must be used in pairs, spanned with an adapter plate.



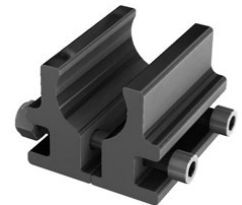
- 1" Bridge Set WC-R1B-SET
- 7/8" Bridge Set WC-R7/8B-SET
- Mixed Set (1 ea.) WC-R-Mixed-SET



- 1" Bridge (1)
- 7/8" Bridge (1)

### Round Clamp

For mounting vertically to round tubing



1" Clamp WC-R1

7/8" Clamp WC-R7/8

## Offset Options

Why Offset?

- Get around obstacles like trays, brakes, footrests and armrests.
- Position the Wheelchair Brackets and post for best position.
- Compensate for mounting angle so post is vertical.

Adapter Plate(s) can also be used to offset mounting forward or upward.

### L-Angle Extension



Can be used in pairs to extend mounting up to 7"

WC-LAE

### Adapter Plate(s)



AP2 is a longer offset.  
AP4 has more options.

WC-AP2

WC-AP4

### Angle Adjust Plate



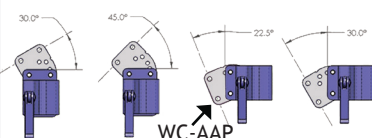
Compatible with any mounting component. Adjust post to vertical (every 7.5°).

WC-AAP

## Wheelchair Mounting - 3b Select Wheelchair Bracket(s)

### Solid Wheelchair Bracket

Configurable in 2 orientations.  
Compact profile.  
Minimal play/slop.  
More secure.



WB2

Use with WC-AAP for mounting at an angle (7.5 degree increments)

### Rehadapt with Tilt Plate



Customer supplies the TS-XL head

DPA-Rehadapt TS-XL

### Wheelchair DAESSY adapter



Compatible with DAESSY wheelchair hardware.

WB-DAESSY

# Step 4 : Choose Device Attachments & Accessories

Access anything, anywhere! Select access for one or multiple devices and trays

## 4 : BlueSky Designs Accessories

### Quick Release Plate



One comes free with each Mount'n Mover.

**QRP**

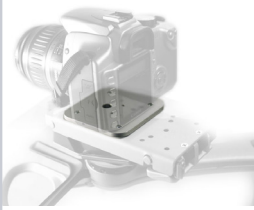
### Universal Rotator



Add a degree of freedom between tilt and device. Great for eyegaze and tablets.

**DP-UR**

### Camera Plate



Turns a Quick Release Plate into a camera stand! Compatible with other tripod heads

**DP-CAM3**

### Stand +90°

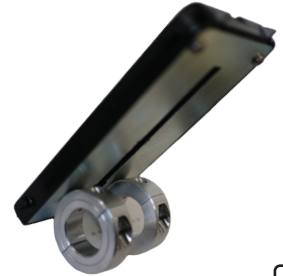


Extend your downward tilt range to 180°. Also use as a table stand for devices

**DP-STAND90**

### Tilt Plate Adapter

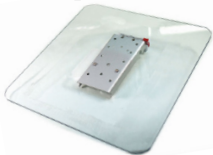
Compatible with DAESSY and Rehadapt. Other sizes available.



**TR-TPA**   
1"   
7/8"

## 4 : Tray Options - Reading, Laptops, iPads, etc

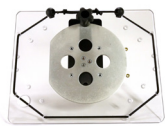
### 12"x 12" Tray



Multi-purpose tray. Adapt it for your needs.

**TR-12x12**   
**Add QRP?**

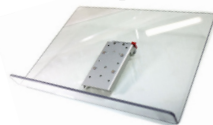
### iPad-Tablet Tray



Great for iPad and Tablet. Easily switch from landscape to portrait with Universal Rotator (shown).

**TR-iTab**   
**TR-iTab-UR**   
(With Universal Rotator)  
**Add QRP?**

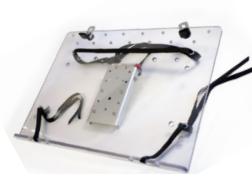
### 12"x 16" Tray with Lip



Multi-purpose tray with lip. Great for books, tablets, etc. Angle it flat and turn it around for writing or eating.

**TR-12x16**   
**Add QRP?**

### Laptop Tray



Tray, holes and straps fit most laptops securely. Easily remove your laptop.

**TR-LT**   
**Add QRP?**

### Tablet Tray (with hinge tray)



**TR-iTab-Keyboard**   
9.5" x 12" (x2)

### Phone Plate

Attachment plate for mobile phone. Includes an Otterbox Defender swivel case. Shown with Quick Release Plate (not included).

Landscape or portrait



**DP-PHONE-OB**



Add a Swing Away Tray on a 12 x 16" or Laptop Tray to hold a mouse, phone or other small device. See website for information.

## 4 : Communication Device Attachments

### Attach any Device with Ease

Device plates attach communication devices to the Mount'n Mover's Quick Release Plate (QRP).

One QRP comes with each Mount'n Mover.

### Find the attachment plate for your device

MAKE	MODEL	PLATE
Tobii Dynavox	Maestro, T10, T15, V, Vmax, M3, DV4, MT4	DP-DV1
	EyeMax, Maestro w/eye gaze	DP-DV2
	EyeMobile	DP-MULTI1
	T 7, C15 w/eye gaze	Contact Us
	P10, C8, C12, CEye, S32,	DP-T1
	I12, I15	DP-T2
Prentke Romich Co.	Accent 700, 800, 1000	DP-PRC5
	Accent 1400, ECO2, ECOpoint, ECO-14, Vanguard, Pathfinder 2	DP-PRC1
	Accent 1200, Vantage Lite, Springboard Lite, ChatWrap	DP-PRC4 *
Salttillo	NOVA chat (requires wheelchair mounting plate sold by Salttillo)	DP-PRC4
Others	(Jabbla)-Mobi/Tellus, (Abilia)-Rolltalk, AMDI, VESA (50,75,100mm), Smartbox	DP-MULTI1
iPad/ Tablets	Fits most iPads / Tablets	TR-iTAB

Plates for AbleNet, Lightwriter and more are available. See website for specifics

\* DP-PRC4 plate requires a QRM mounting bracket from Prentke Romich Co.