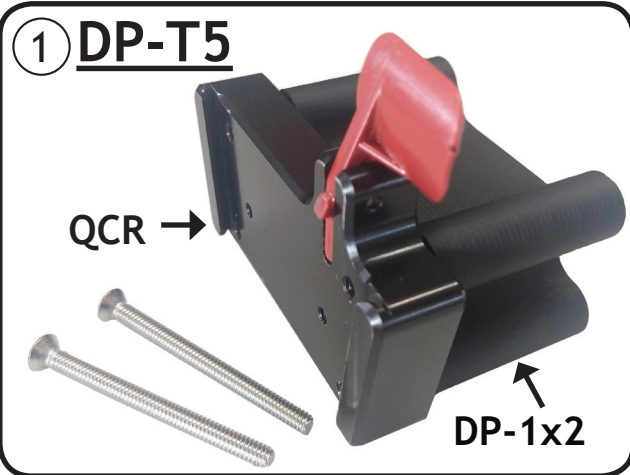
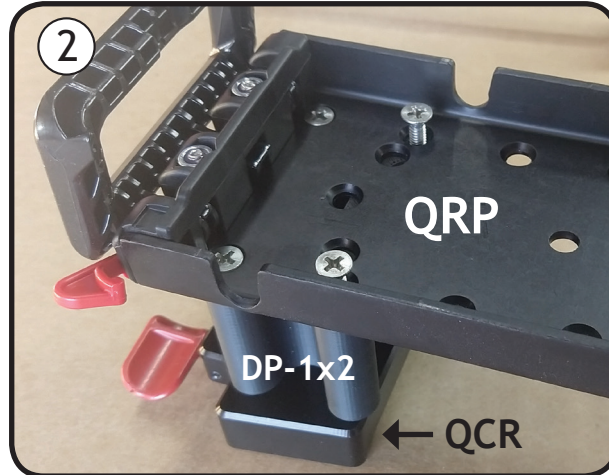


DP-T5 Attaching the Tobii i13 or i16 to a Mount'n Mover with a Tilt Plate

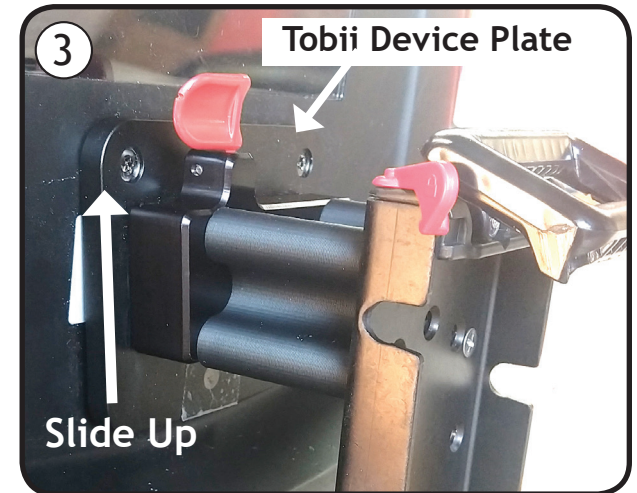
Tobii i13



The DP-T5 consists of the Quick Connect Receiver (QCR), the DP-1x2, and four 8-32 x 2" screws (Note: two screws are holding the two parts together)

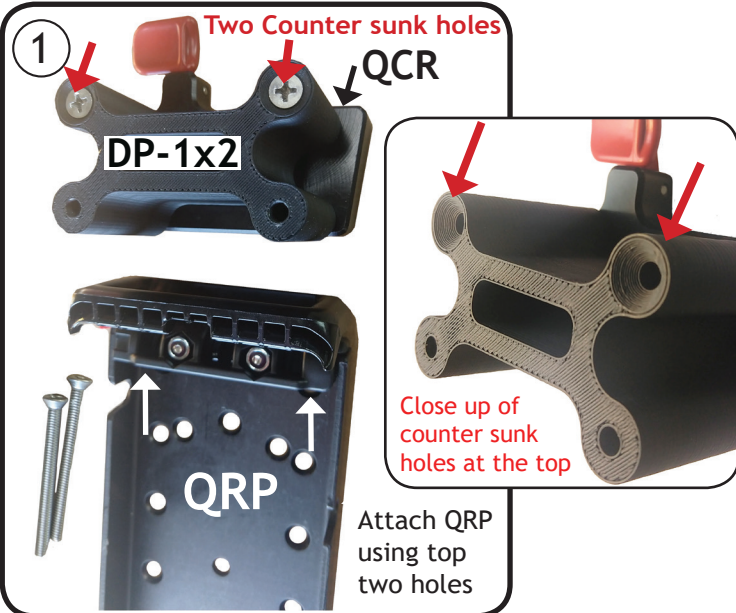


The four screws go through the Quick Release Plate (QRP), through the DP-1x2 and into the Quick connect receiver (QCR)

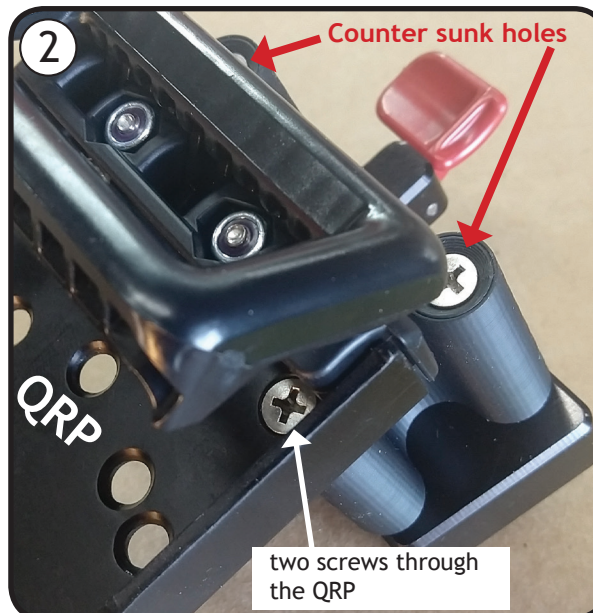


Slide the DP-T5 onto the connecting grooves on the Tobii device plate until it "clicks" in place.

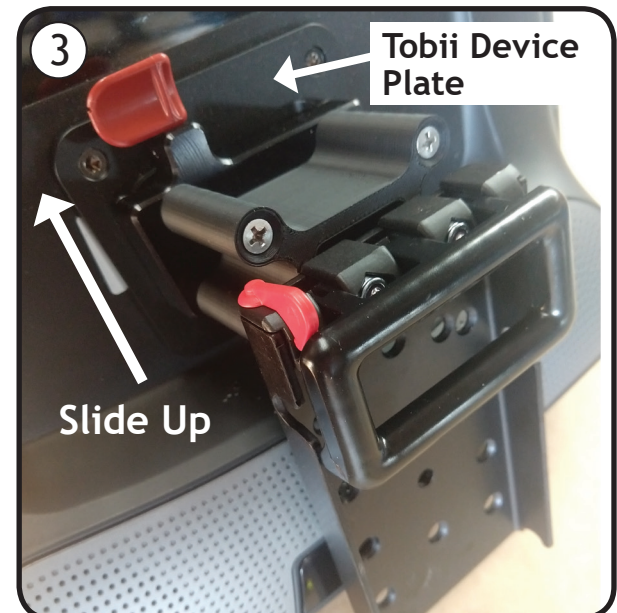
Tobii i16 * Reconfigure screws for an i16



Attach the DP-1x2 to the QCR with two of the screws (use the two counter sunk holes)

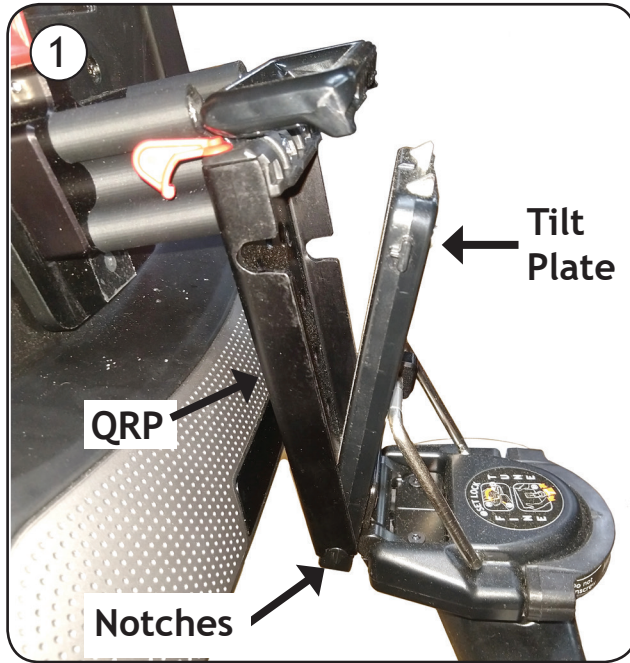


Quick Release Plate is attached using two screws. Note the counter sunk holes are at the top.

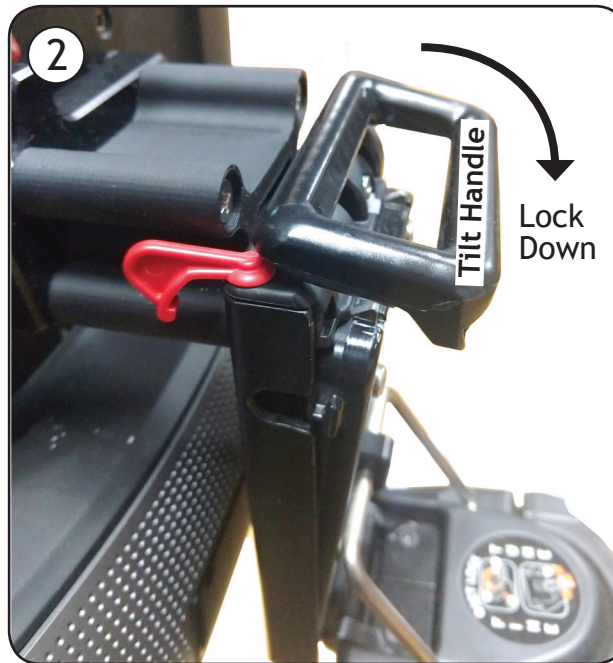


Slide the DP-T5 onto the connecting grooves on the Tobii device plate until it "clicks" in place.

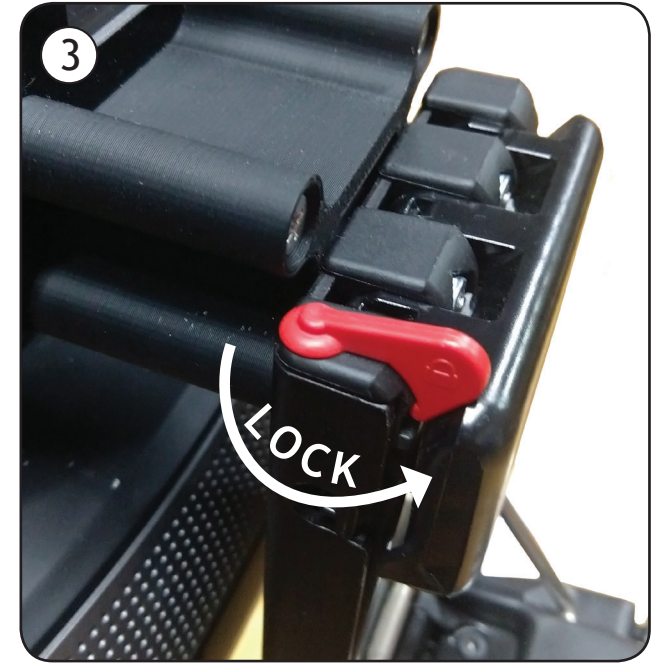
DP-T5 Attaching the Quick Release Plate (QRP) to the Tilt Plate



First connect the notches on bottom of the QRP to the protruding pins at the bottom of the Tilt Plate.



Lock down the black Tilt Handle.



Swing RED LOCK LEVER into lock position. This locks down the Tilt Handle.



Tobii i13 fully attached and locked in place

Remove Tobii i13 or i16 from Mount'n Mover



Push RED TAB and lift device up



Tobii i13 detached from Mount'n Mover