

# Mount'n Mover™

by BlueSky Designs

## quick guide

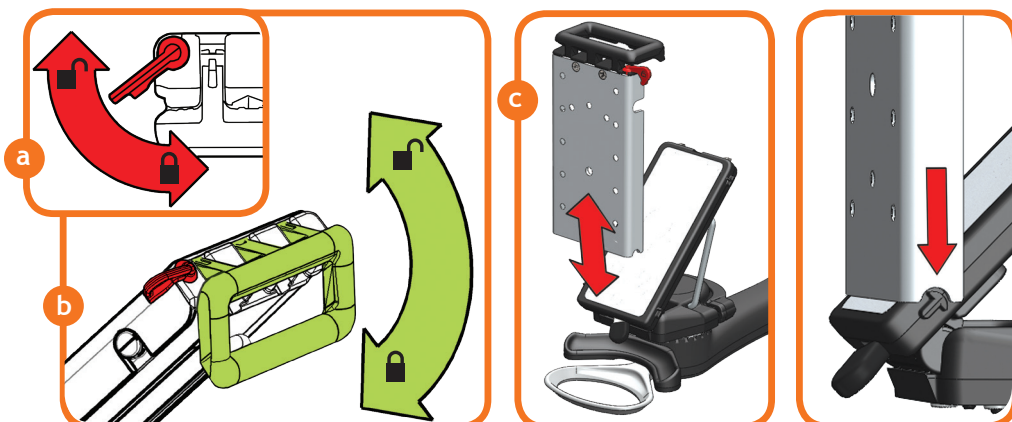


This guide describes the basics of setting up your **Mount'n Mover** so that it stops at, moves from, and returns to any desired position. For further assistance, please call us at **888-724-7002**, or **612-724-7002** or check out our website for more detailed instructions.

[mountnmover.com](http://mountnmover.com)

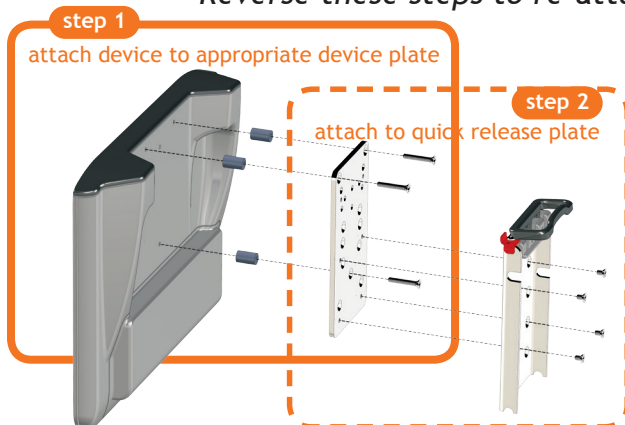
## attach it

- detach Quick Release Plate (QRP)
- reattach QRP
- attach device to device plate

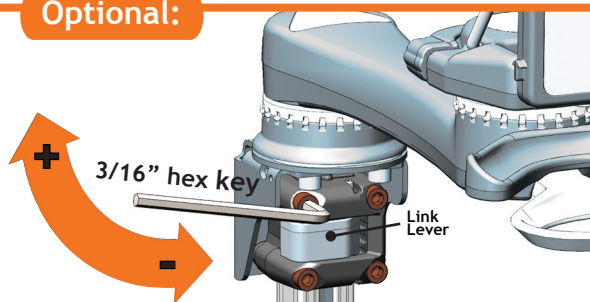


- a: Release "red lock" by rotating clockwise  
b: Unlock by pulling out + up on handle (highlighted green)  
c: Lift off by pulling forward and up

Reverse these steps to re-attach to device plate



### Optional:



For a tighter and more permanent mount to the post, tighten 4 bolts to snug. Be sure Link Lever is closed.

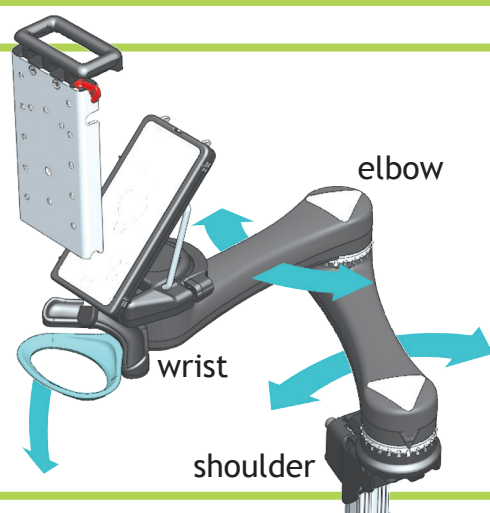
## move it

- move shoulder & elbow joints
- rotate wrist joint
- change tilt-plate angle

Depress **HOOP** to unlock elbow & shoulder joints

Move It from lock position

To find lock position release downward pressure on hoop and move until arm stops



Depress **PADDLE** to release the wrist lock

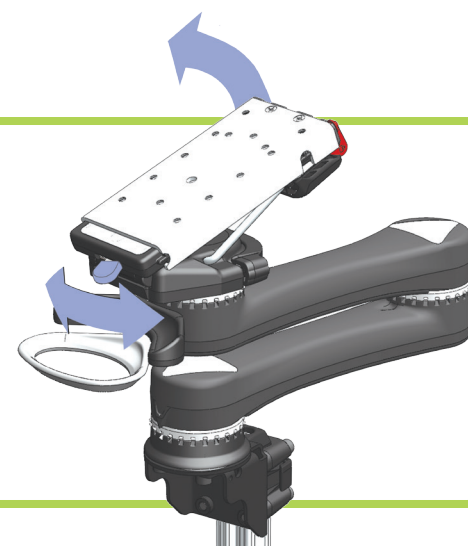
Move it

Wrist will remain unlocked until it reaches lock position

Slide **LEVER** to the *right* to unlock the tilt-plate

Position the tilt-plate to the desired orientation

Slide the LEVER to the *left to lock* the tilt-plate



## set it

To set custom lock positions:  
Align black arrow with desired lock position and slide lock tab down

### Initial Setup

Flip up all lock tabs so joints move freely with no lock positions

⚠ You cannot unset a lock tab with the black arrow directly above it

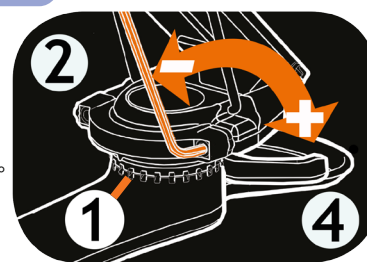
Orient to best fit user needs; move black arrow to nearest lock tab; slide lock tabs down to set locks



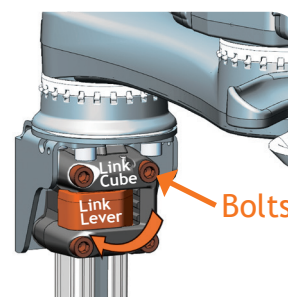
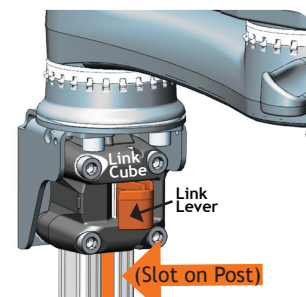
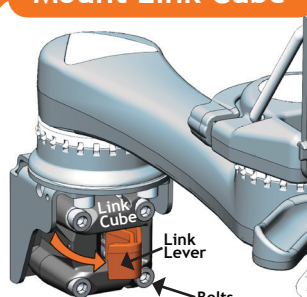
### Fine Tune Wrist

precisely adjust lock position

1. Set lock
2. Loosen hex head bolt
3. Adjust device orientation 7°
4. Tighten hex head bolt



### Mount Link Cube



**Open** Link Lever (if difficult to open, loosen each bolt slightly).

Slide Link Cube on to post. Line up slot on post with front of cube.

**Close** Link Lever to secure cube to post. If cube moves on post, tighten bolts 1/4 turn.

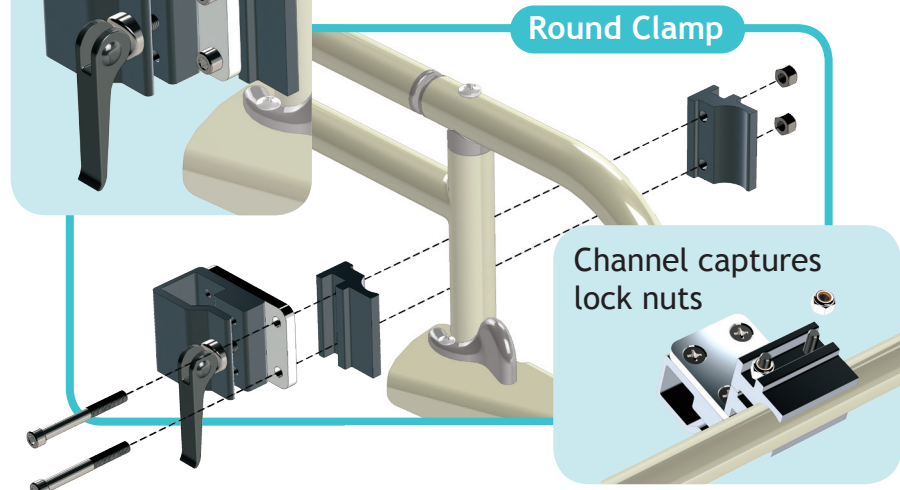


# mount it

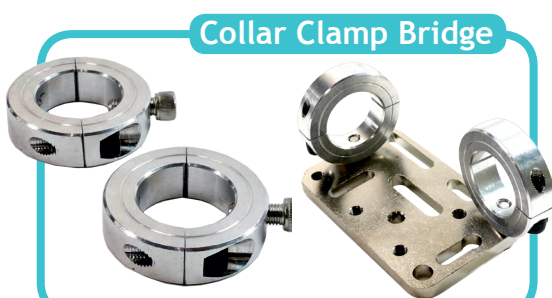
- step-by-step instructions and mounting options are available at: [www.mountnmover.com](http://www.mountnmover.com)
- periodically check that all screws are tight

● 1/4-28 threads

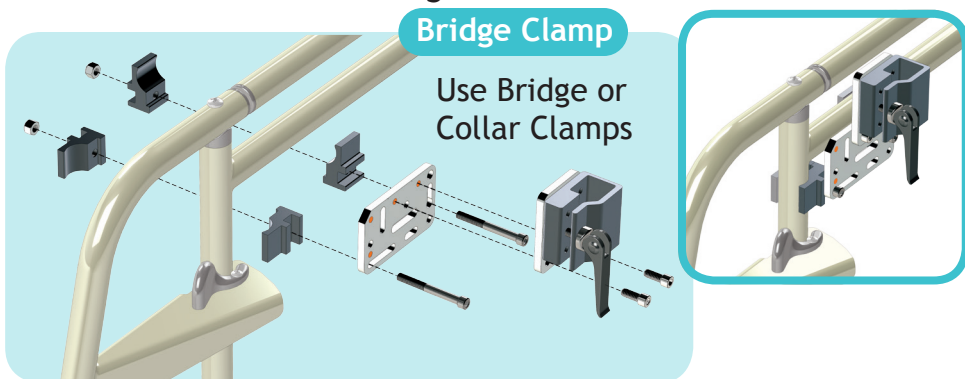
Use our Round Clamp for mounting vertically to round tubing



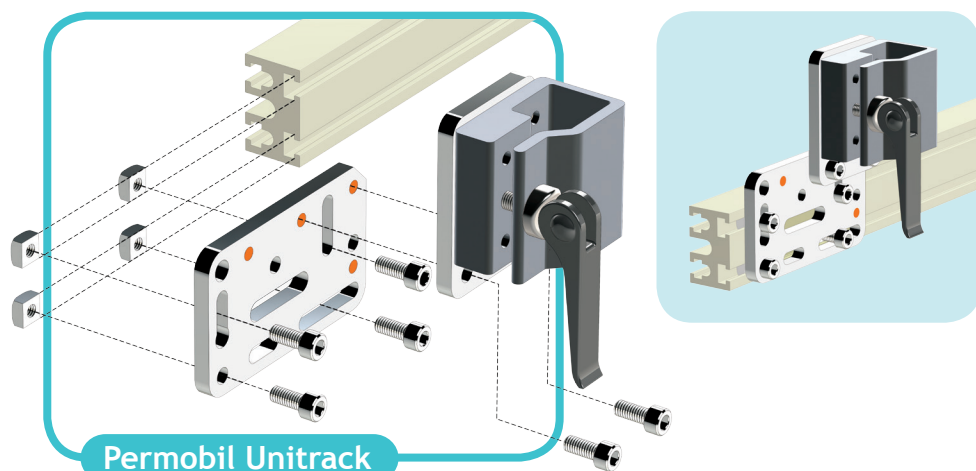
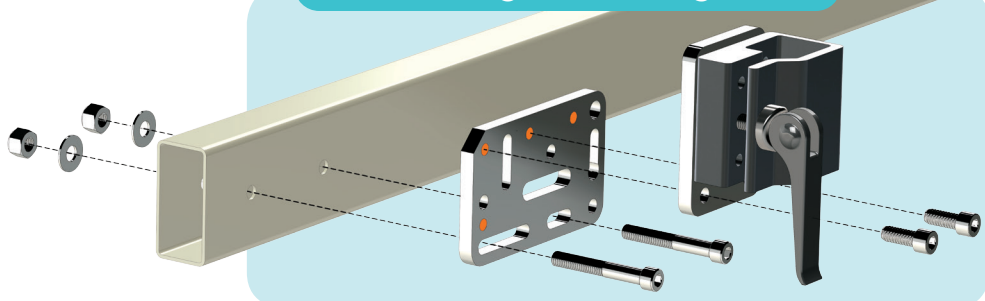
Collar Clamps come in a wide variety of sizes to fit most round tube wheelchair frames



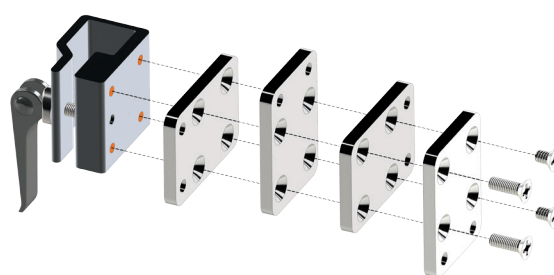
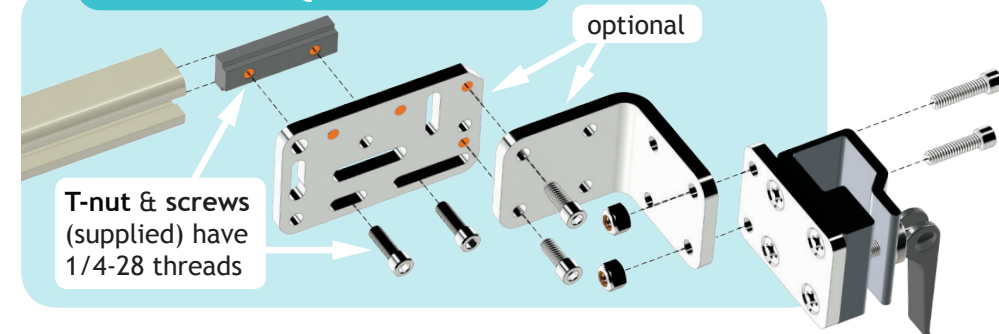
Our Bridge Clamp provides a stable mounting solution for most chairs with round tubing



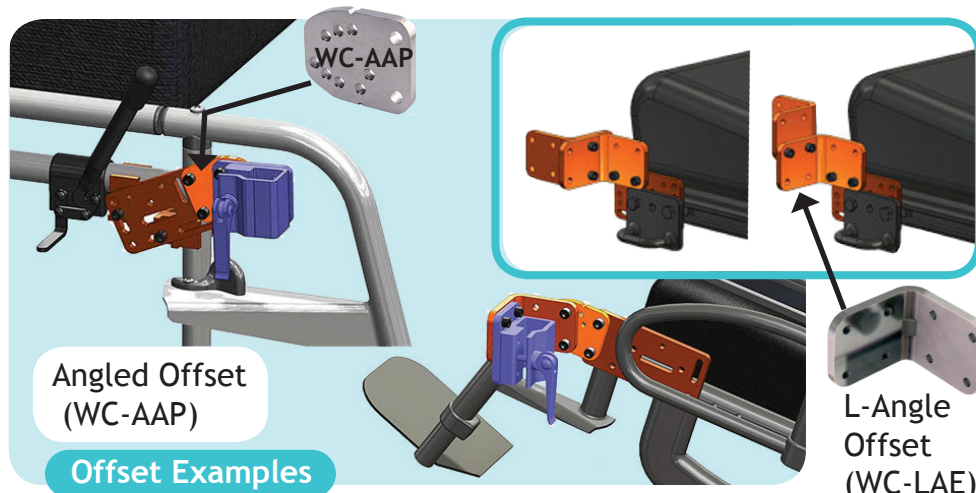
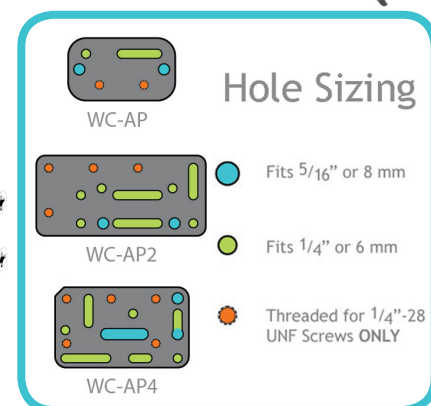
**Frame Tubing With Through Holes**



**Invacare & Quantum track**



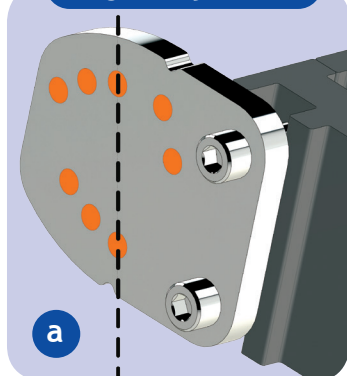
Back plate has 4 orientations



# adjust it

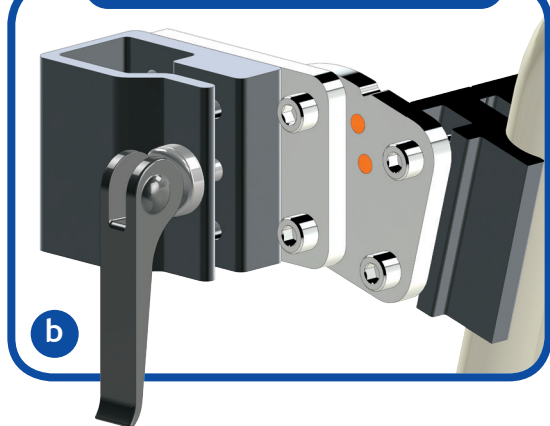
- a + b - post should be vertically oriented for the user's typical upright position (dashed line in a)
- c - slots in clamp + post must align
- d - post clamp pressure should be set so that, when clamped, the post is held tightly and securely
- e - post height set screw ensures repeatable height & safety

**Angle Adj. Plate**

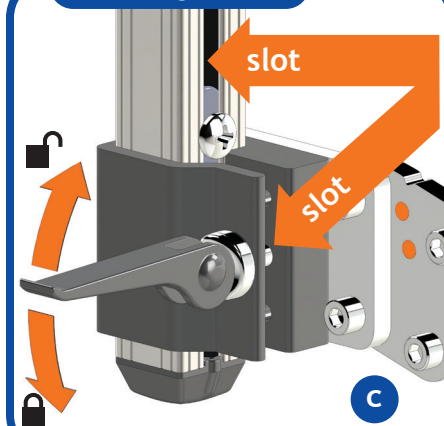


Flip the plate for more angles (every 7.5°)

**Solid Wheelchair Bracket**

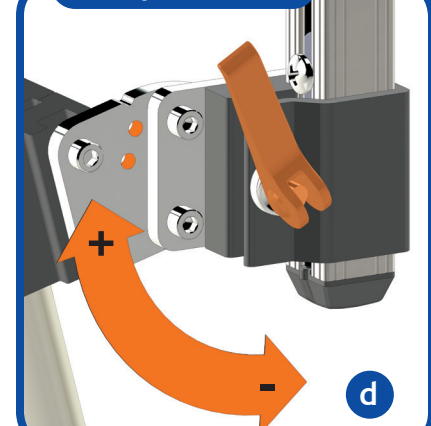


**Post Alignment**

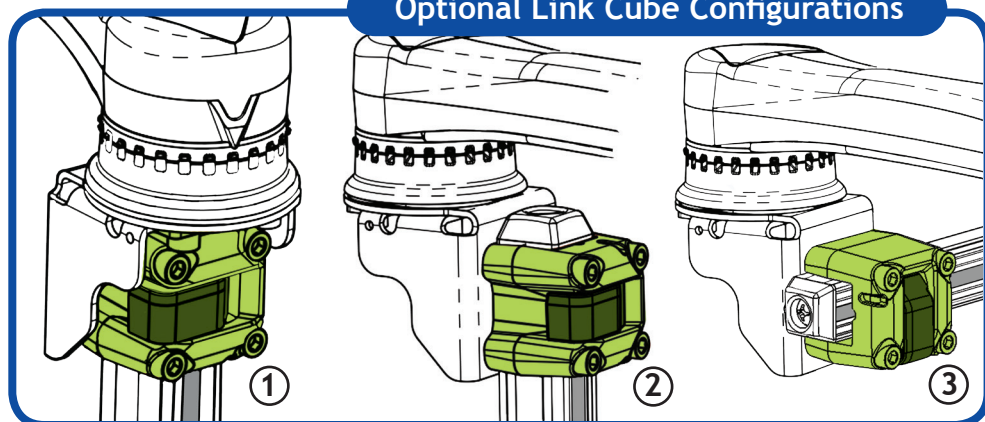


Post is correctly aligned when the post and clamp slots are aligned

**Clamp Pressure**



**Optional Link Cube Configurations**



**Post Height**

