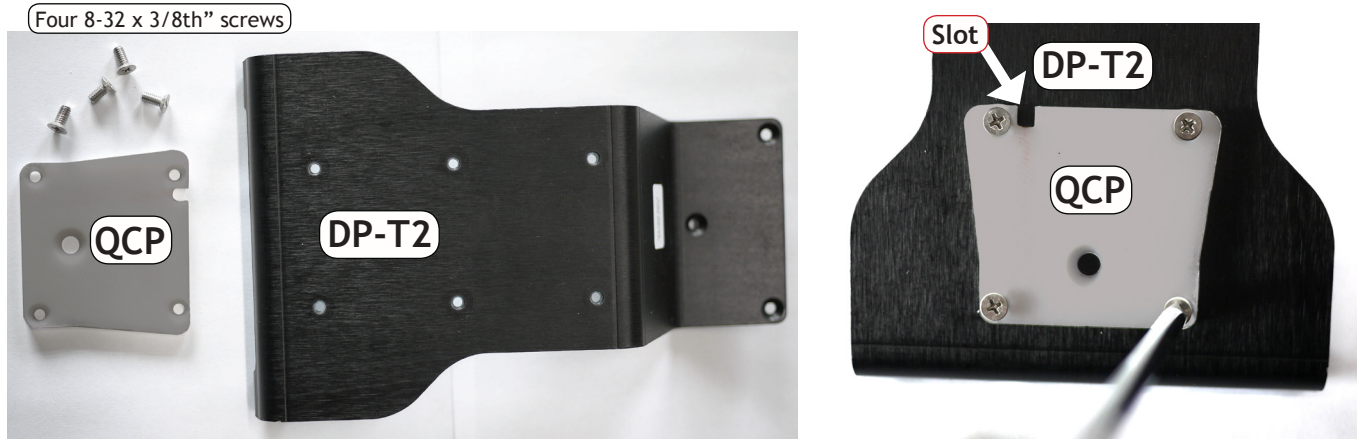


DP-QCR (Quick Connect Receiver) **to DP-T2** (sandwiched with DP-QCP) (Quick Connect Plate)

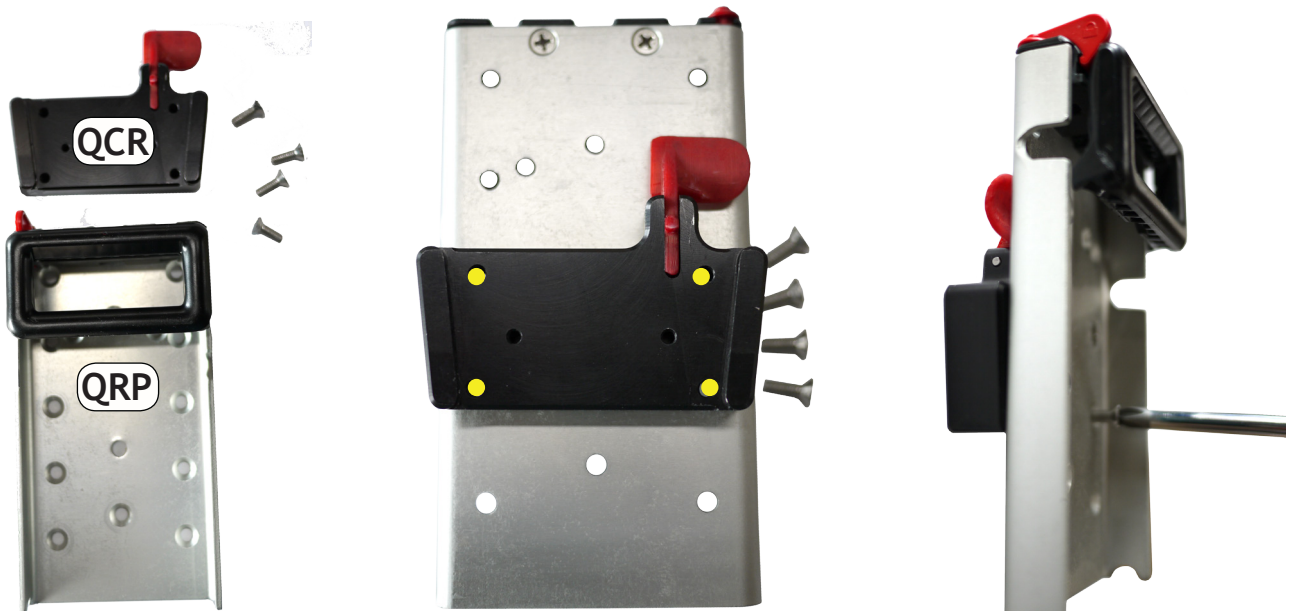
STEP 1 Attach the DP-T2 to your device as included instructions illustrate

STEP 2



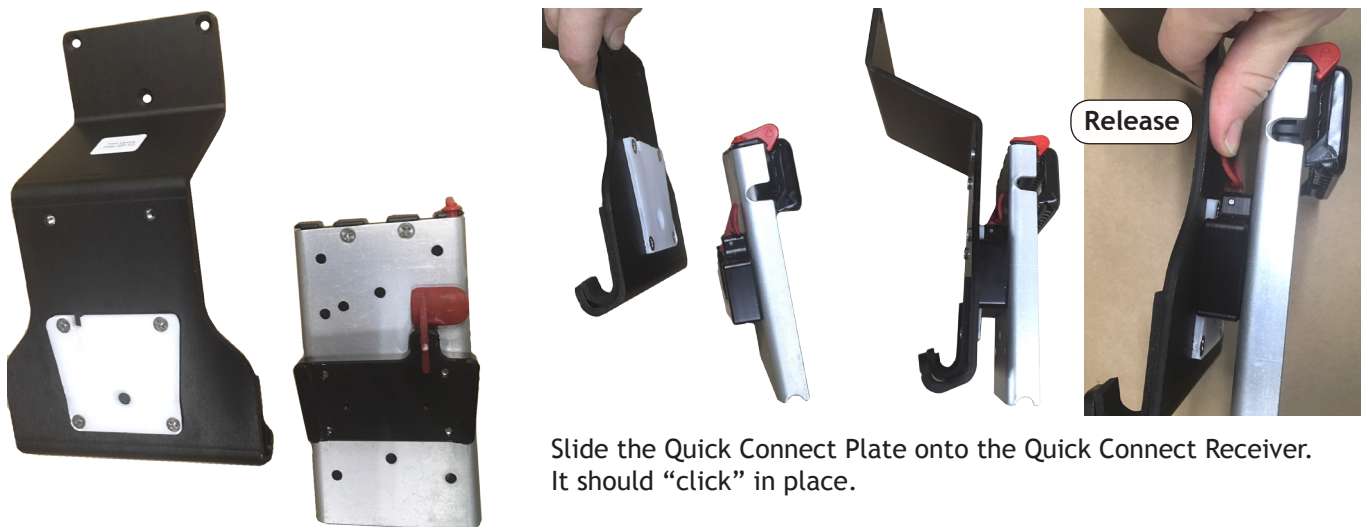
Quick Connect Plate (QCP) and DP-T2. Attach with four 8-32 x 3/8th inch screws (included with DP-T2)
* Note the position of the slot at the upper left of the QCP.

STEP 3



Quick Connect Receiver (QCR) and the Quick Release Plate (QRP). Attach the QCR to the QRP with four screws (8-32 x 1/2 inch) included with the Quick Connect Receiver.

STEP 4



Slide the Quick Connect Plate onto the Quick Connect Receiver. It should "click" in place.

To release...push gently on the red lever and slide the Quick Connect Plate out of the grooves on the Quick Connect Receiver.