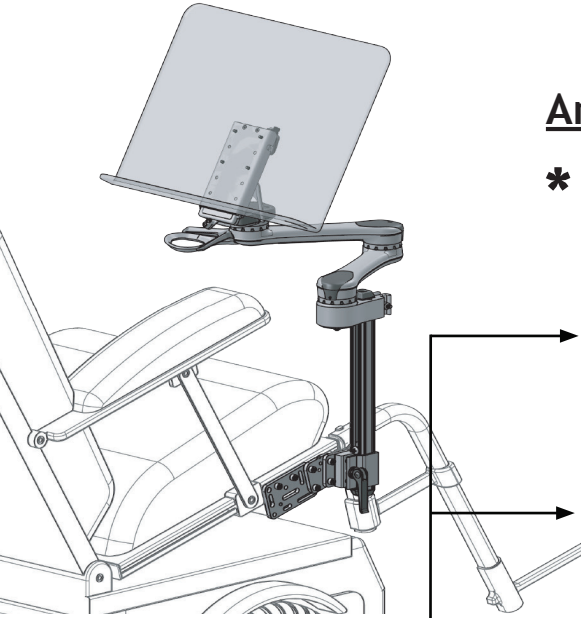


# Wheelchair Attachment Overview

\* All plates are considered 'multi-use plates' and can be configured, combined, and used in a variety of ways.



## Anchor to Chair

\* What you use will depend on what kind of chair frame you have.

- Round tubing
- Slide track
- Hole-spacing
- Tie-Down



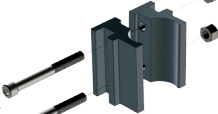
T-Nut (WC-TN)



Adapter Plate 2 (WC-AP2)



Adapter Plate 4 (WC-AP4)



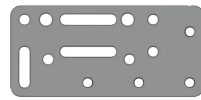
Round Clamp (WC-R1 or R7/8)

Start with a power or manual wheelchair

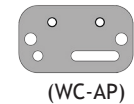
## Span the bridge clamps with a plate



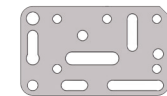
Bridge Clamps



Adapter Plate 2 (WC-AP2)



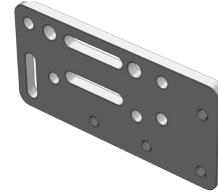
(WC-AP)



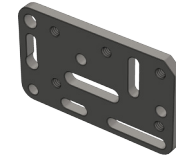
(WC-AP4)

Plate to span across the clamps

## OPTIONAL OFFSET



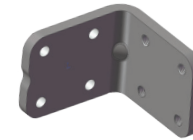
Adapter Plate 2 (WC-AP2)



Adapter Plate 4 (WC-AP4)

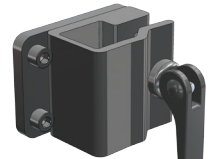


Angle Adjust Plate (WC-APAP)



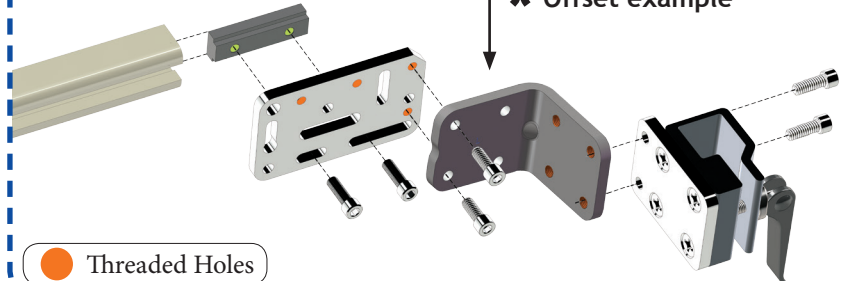
L-Angle Extension Plate (WC-LAE)

## Wheelchair Bracket



(WB2)

\* Offset example



Threaded Holes