

# Attaches to:

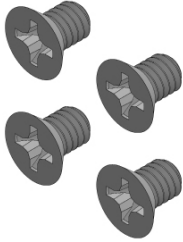
## PRC ACCENT 1400 with Look Eye Gaze Bar

Device plate  
to device



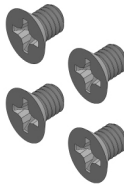
6/32 x 1/2" Flat Head (x4)  
Screw A

Quick release  
plate (QRP) to  
device plate



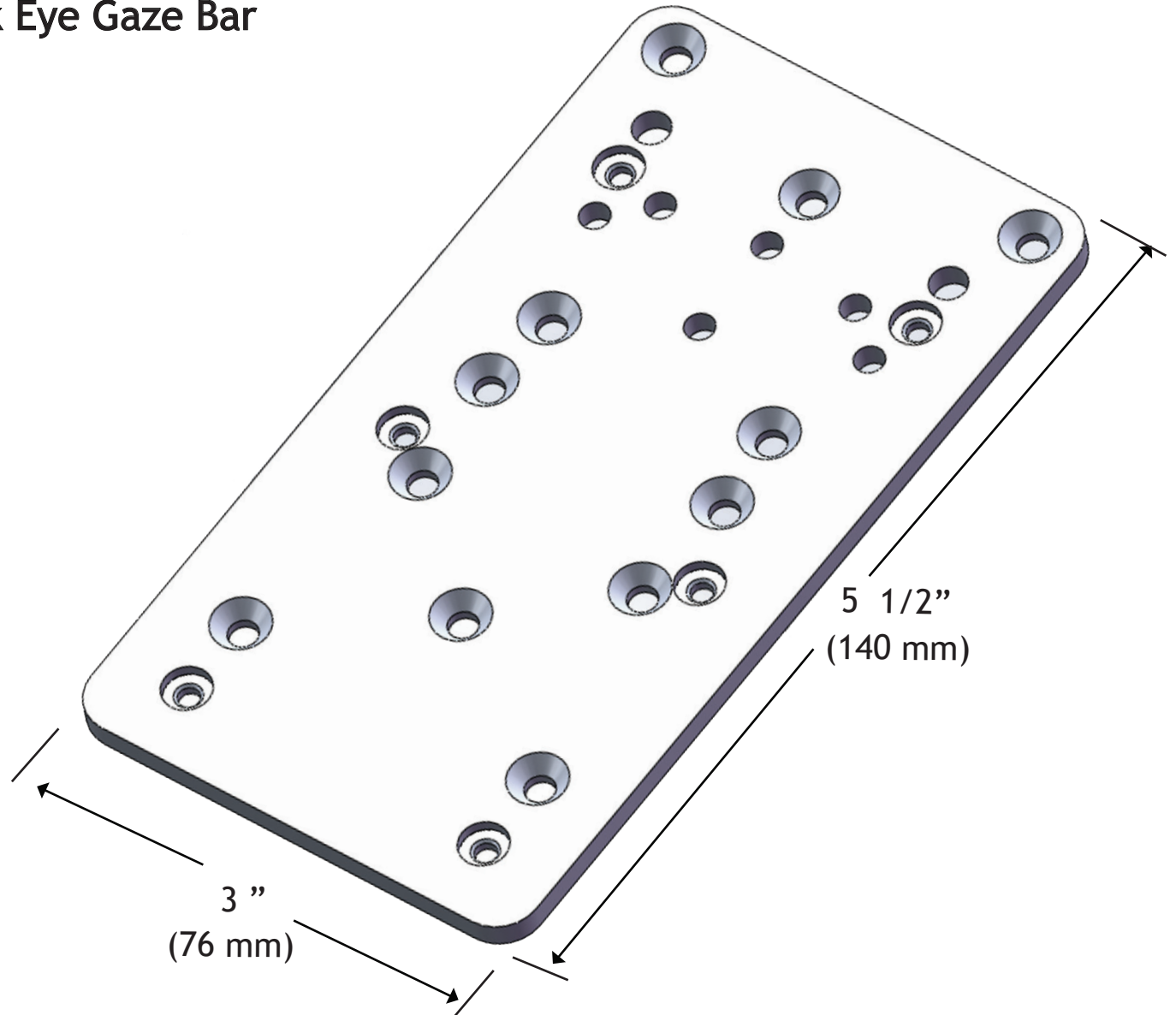
8-32 x 1/4" (x4)  
Screw T

Quick release  
plate (QRP) to  
Rotator



8-32 x 3/16" (x4)  
Screw CC

\* These Screws are ONLY  
used for attaching the  
Quick Release Plate to the  
Universal Rotator



**Mount'n Mover™**  
by BlueSky Designs

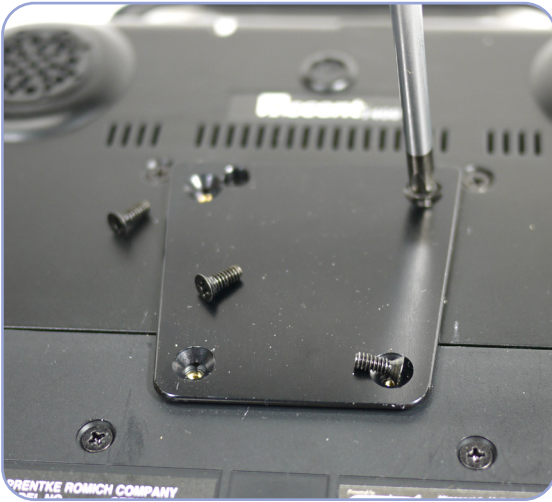
[mountnmover.com](http://mountnmover.com)

Product: DP-PRC1, Prentke Romich Co.  
Weight: 3.8 oz. (0.11 kg)

1-888-724-7002 (toll free) or 1-612-724-7002

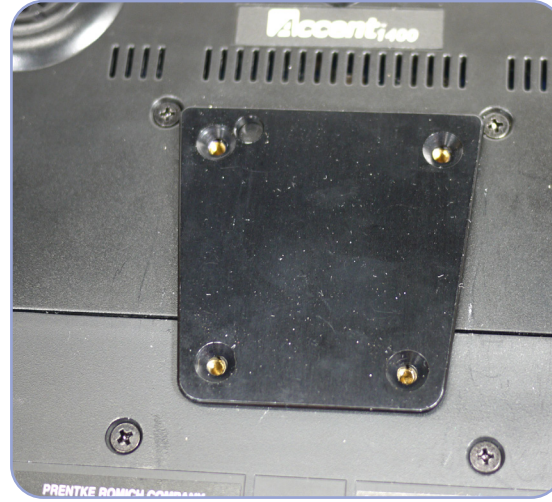
# PRC Accent 1400

1



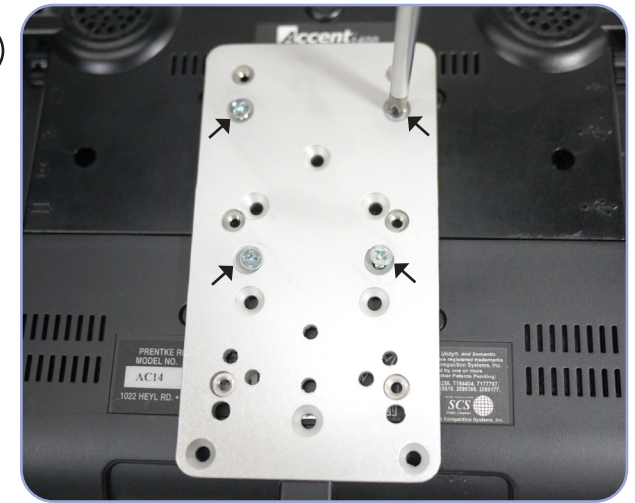
Remove screws from mounting bracket.

2



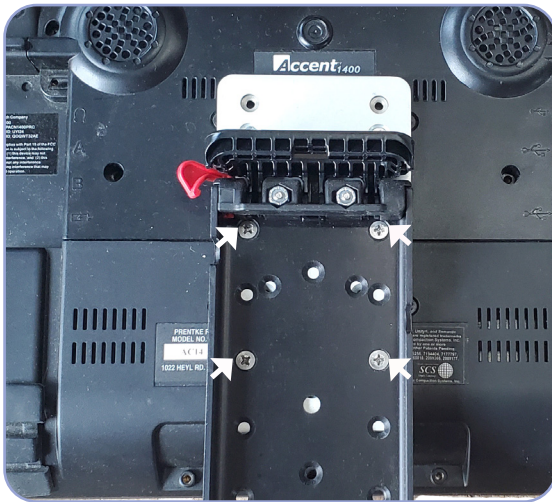
Leave mounting bracket in place.

3



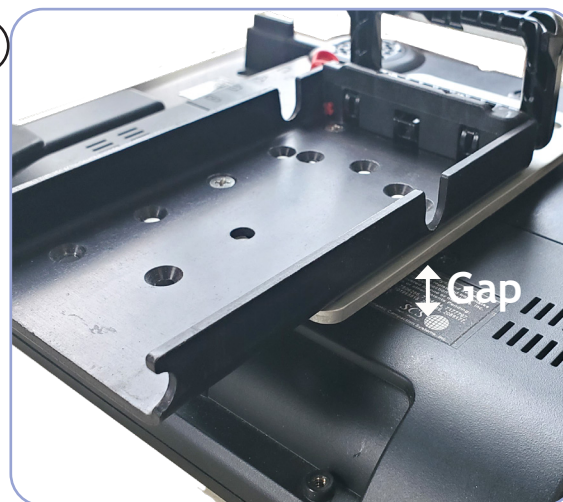
Place DP-PRC1 over the Accent 1400 mounting bracket. Line up the four holes between the two plates and the Accent 1400. Attach using the four screws provided (6/32 x 1/2").

4



Attach the Quick Release Plate to the DP-PRC1 using the four screws provided (8/32 x 1/4")

5



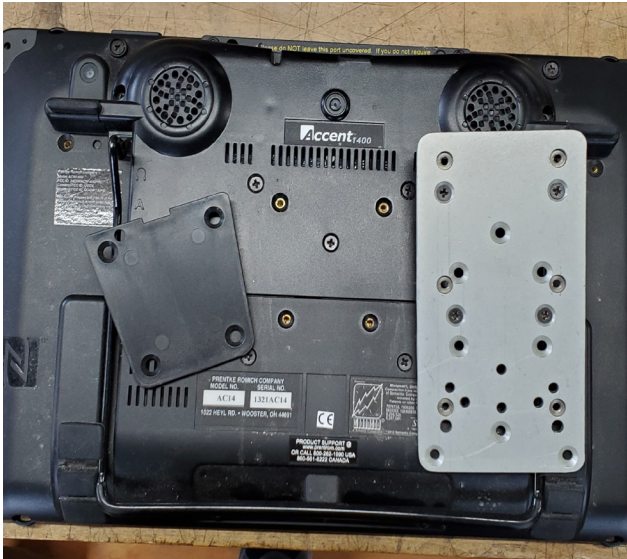
There should be a gap between the DP-PRC1 plate and the Accent 1400 to allow for ventilation.

6

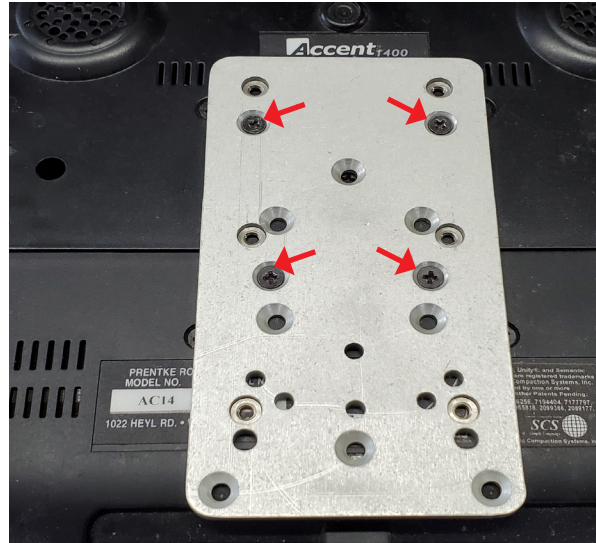


Attach the Quick Release Plate (QRP) to the Mount'n Mover!

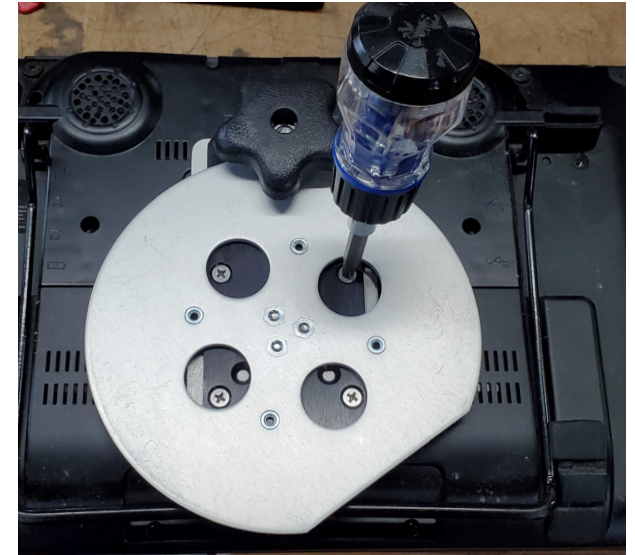
## Attaching the PRC1, Rotator, and Quick Release Plate to the back of the Accent 1400



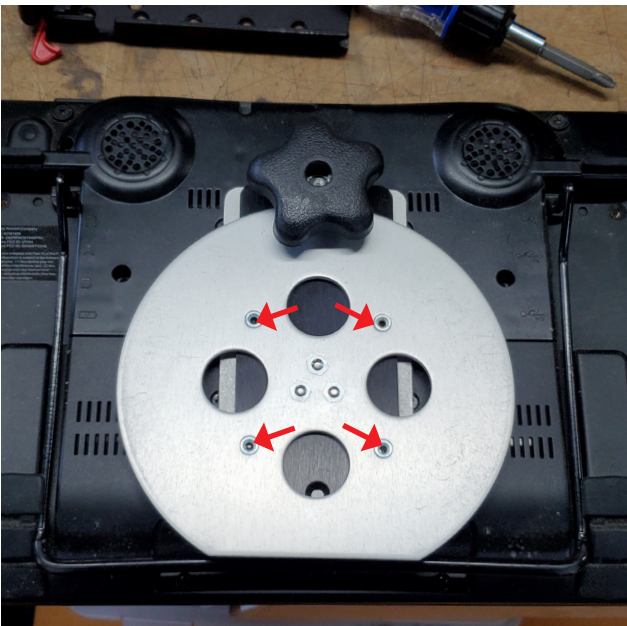
Remove PRC mounting bracket. Use same screws to attach PRC1 plate (silver plate).



showing PRC1 plate attached



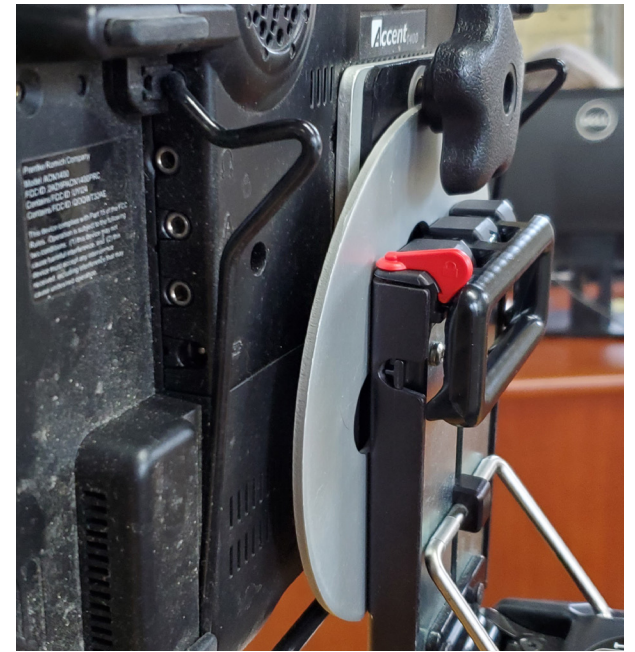
Spin the rotator to locate the holes in the attached (black plate). Use the screws "Rotator to PRC1 plate" to attach rotator.



Straighten out the rotator and attach the QRP (quick release plate) to the threaded holes on the rotator.



Be sure to use the screws "attaching QRP to Rotator". If you use too long of screws the rotator will not spin. (8-32 x 3/16)



All attached and mounted. Loosen the knob on the rotator and spin to adjust the angle. Tighten when angle is correct! pg 2 of 3