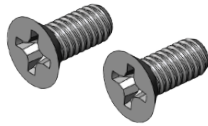


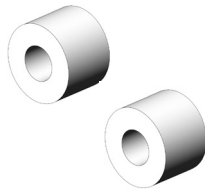
DP-T4 Attaches to: Tobii Dynavox I-110

Device plate
DP-T4 to
device (I-110)



M4-.7 x 16mm (X2)

Spacers

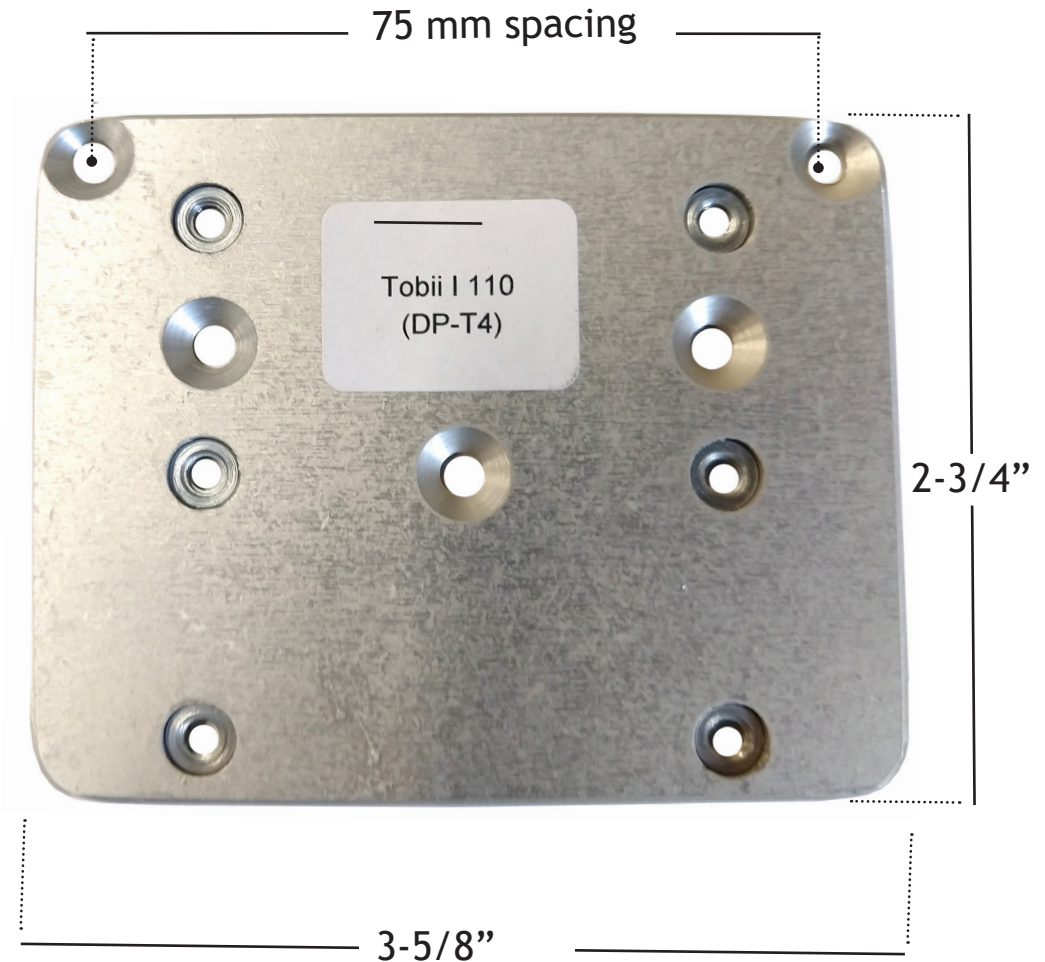


3/8 x 3/8" (X2)

Quick release
plate (QRP) to
DP-T4



8-32 x 1/4" (x4)



Mount'n Mover™
by BlueSky Designs

mountnmover.com

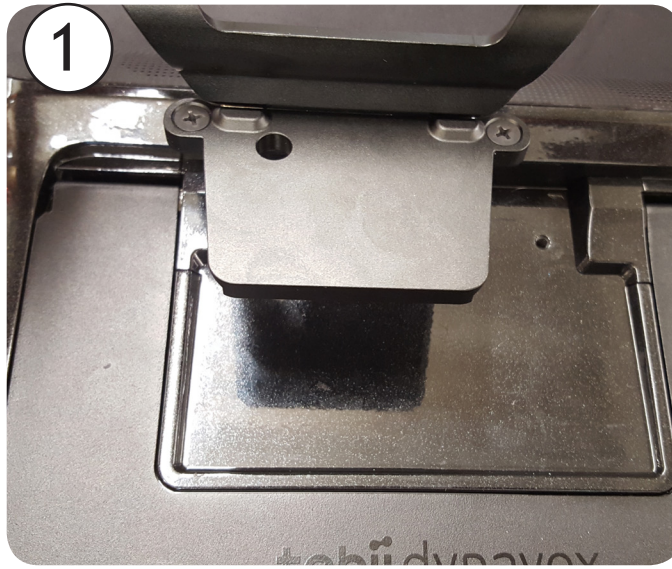
Product: DP-T4, Tobii
Weight: 2.0 oz. (0.056 kg)

1-888-724-7002 (toll free) or 1-612-724-7002

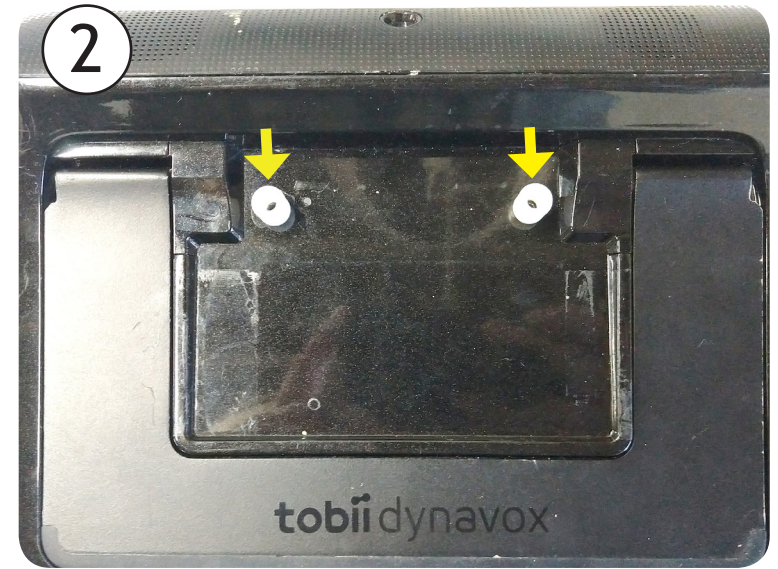
pg 1 of 2

Instructions:

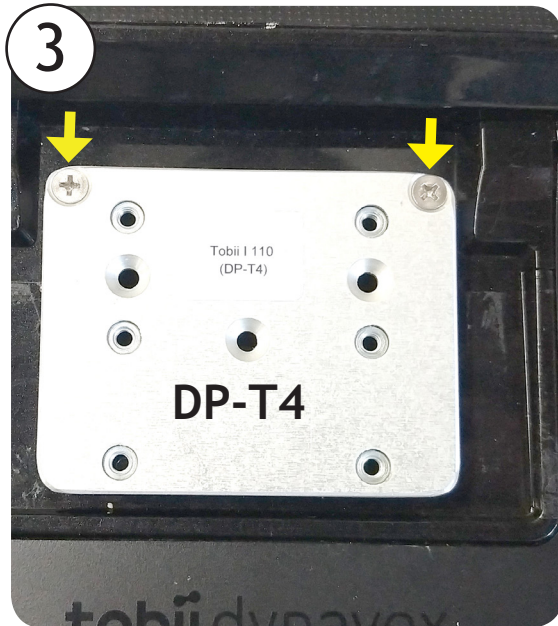
For use with the QRP
(Quick Release Plate)



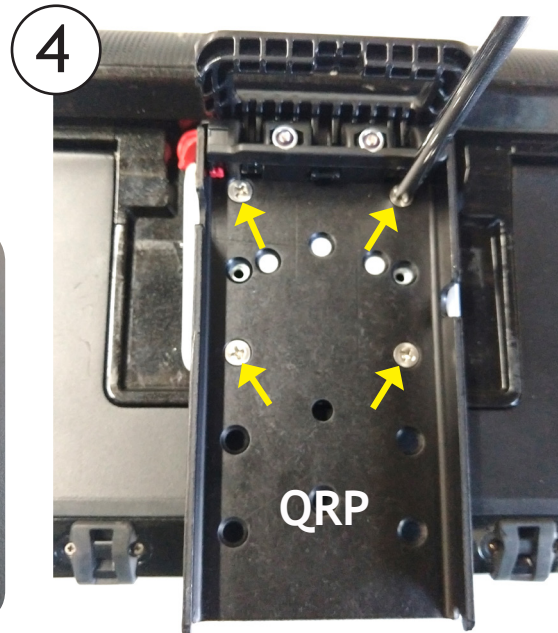
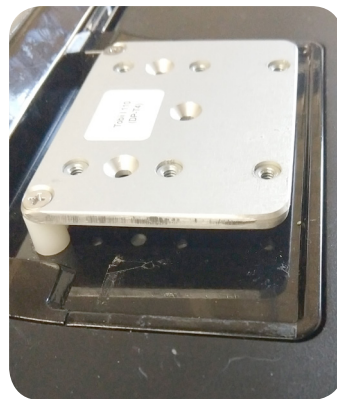
Remove back plate and stand from device



Place the two spacers over the threaded holes in the device.



Place DP-T4 over the spacers on the back of the Tobii i110. Use the two screws provided with the DP-T4 (M4-.7 x 16mm) to attach the DP-T4 to the Tobii i110.



Attach the QRP (Quick Release Plate) to the DP-T4 plate with the four screws provided with the DP-T4 (8-32 x 1/4").

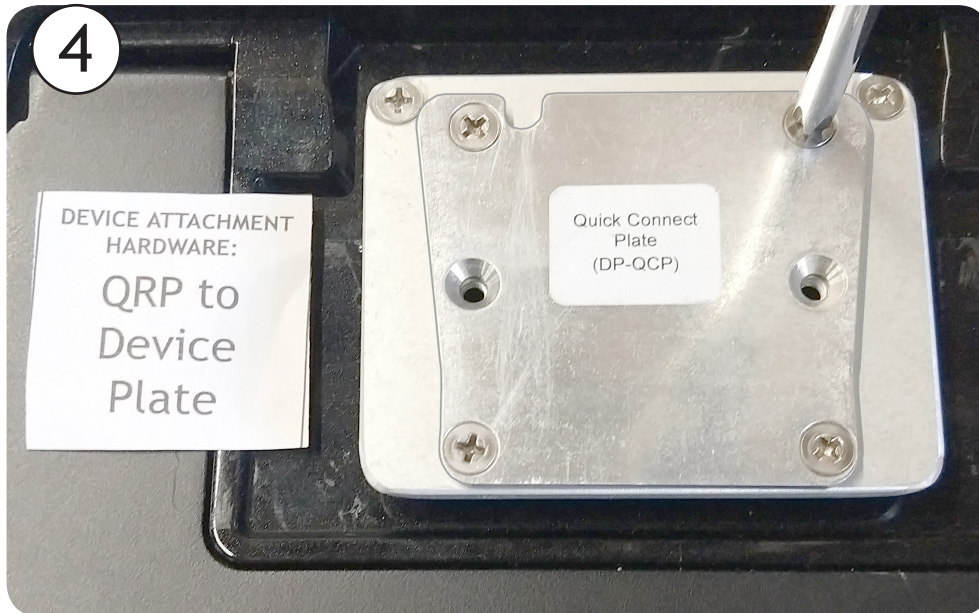


Tobii i110 mounted to the Mount'n Mover.

Instructions:

For use with the QCR
(Quick Connect Receiver)

Follow previous
instructions #1, #2 and #3



Attach the DP-QCP (Quick Connect Plate) to the DP-T4 plate. Use the four screws that came with the DP-T4 plate (8-32 x 1/4")



Slide the Quick Connect Receiver (QCR) onto the Quick Connect Plate (QCP) until it "clicks"