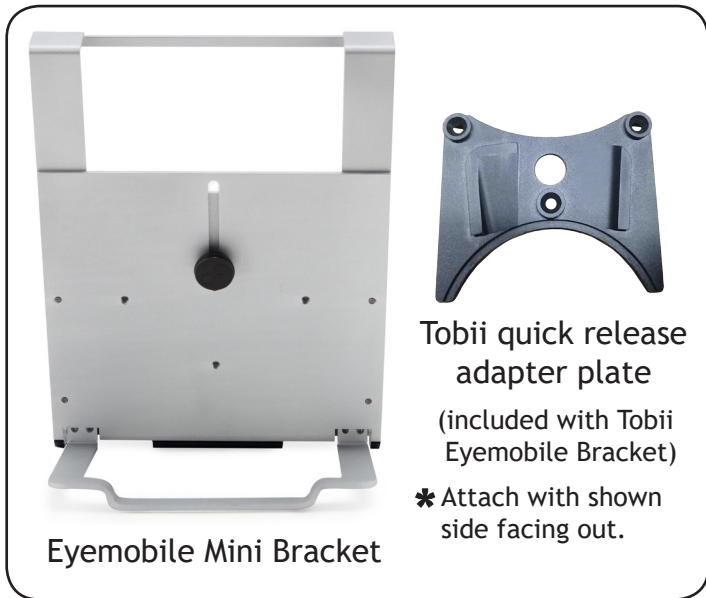
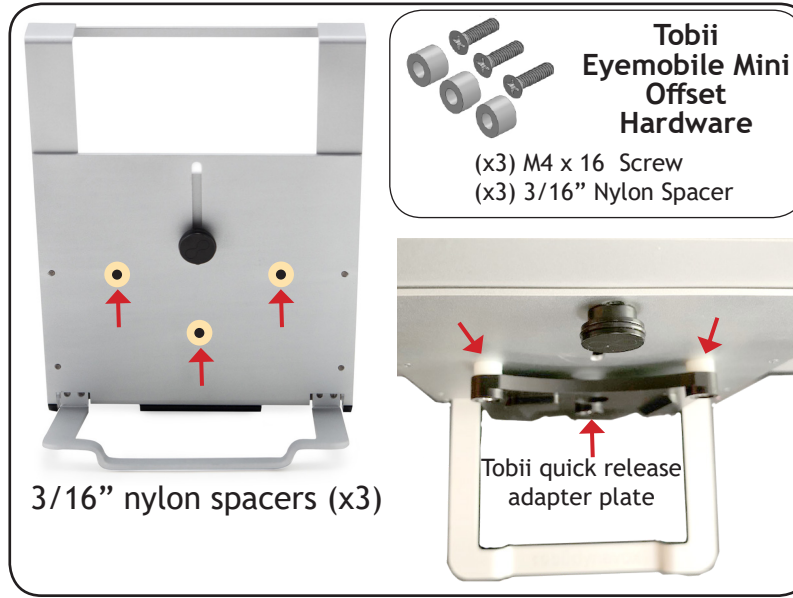


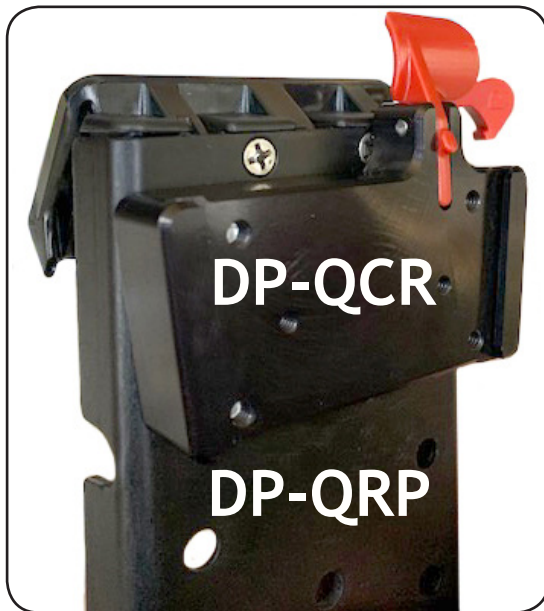
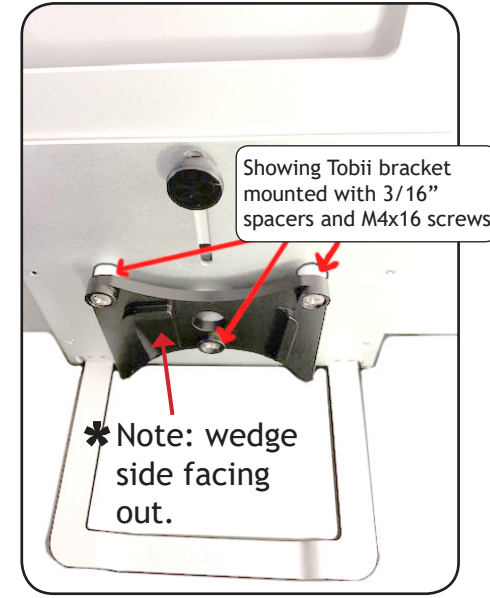
Tobii Dynavox EyeMobile Mini ---Mounting Instructions



The Tobii Eyemobile Mini Bracket comes with a Tobii quick release adapter plate.



Attach the Tobii quick release adapter plate using the hardware labeled "Tobii Eyemobile Mini Offset Hardware". Place the nylon spacers over the threaded holes on the back of the Tobii bracket. Use the M4x16 screws to attach the quick release bracket.



Attach the DP-QCR to the DP-QRP using the four screws included with the QCR 8-32 x 1/2"

